

Datasheet for ABIN651919  
**anti-PRG2 antibody (AA 316-344)**[Go to Product page](#)

## 2 Images

## Overview

Quantity:	400 µL
Target:	PRG2
Binding Specificity:	AA 316-344
Reactivity:	Human
Host:	Rabbit
Clonality:	Polyclonal
Conjugate:	This PRG2 antibody is un-conjugated
Application:	Western Blotting (WB), Immunohistochemistry (Paraffin-embedded Sections) (IHC (p))

## Product Details

Immunogen:	This PRG2 antibody is generated from rabbits immunized with a KLH conjugated synthetic peptide between 316-344 amino acids from the Central region of human PRG2.
Clone:	RB27160
Isotype:	Ig Fraction
Purification:	This antibody is purified through a protein A column, followed by peptide affinity purification.

## Target Details

Target:	PRG2
Alternative Name:	PRG2 ( <a href="#">PRG2 Products</a> )
Background:	The proteins in the lipid phosphate phosphatase (LPP) family, including PRG2, are integral

## Target Details

membrane proteins that modulate bioactive lipid phosphates including phosphatidate, lysophosphatidate, and sphingosine-1-phosphate in the context of cell migration, neurite retraction, and mitogenesis (Brauer et al., 2003 [PubMed 12730698]).

Molecular Weight: 76037

Gene ID: 79948

NCBI Accession: [NP\\_001257295](#), [NP\\_079164](#)

UniProt: [Q6T4P5](#)

## Application Details

Application Notes: WB: 1:1000. IHC-P: 1:50~100

Restrictions: For Research Use only

## Handling

Format: Liquid

Buffer: Purified polyclonal antibody supplied in PBS with 0.09 % (W/V) sodium azide.

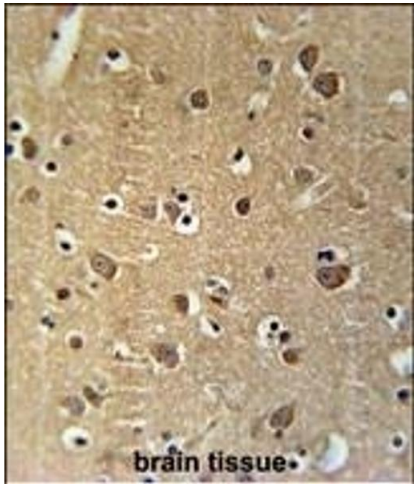
Preservative: Sodium azide

Precaution of Use: This product contains Sodium azide: a POISONOUS AND HAZARDOUS SUBSTANCE which should be handled by trained staff only.

Storage: 4 °C, -20 °C

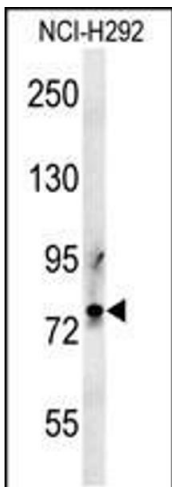
Storage Comment: Maintain refrigerated at 2-8 °C for up to 6 months. For long term storage store at -20 °C in small aliquots to prevent freeze-thaw cycles.

Expiry Date: 6 months



Immunohistochemistry (Paraffin-embedded Sections)

**Image 1.** PRG2 Antibody (Center) (ABIN651919 and ABIN2840454) immunohistochemistry analysis in formalin fixed and paraffin embedded human brain tissue followed by peroxidase conjugation of the secondary antibody and DAB staining. This data demonstrates the use of the PRG2 Antibody (Center) for immunohistochemistry. Clinical relevance has not been evaluated.



Western Blotting

**Image 2.** PRG2 Antibody (Center) (ABIN651919 and ABIN2840454) western blot analysis in NCI- cell line lysates (35 µg/lane). This demonstrates the PRG2 antibody detected the PRG2 protein (arrow).