

Datasheet for ABIN651920  
**anti-LDHD antibody (N-Term)**

## 3 Images

[Go to Product page](#)

## Overview

Quantity:	400 µL
Target:	LDHD
Binding Specificity:	AA 35-62, N-Term
Reactivity:	Human
Host:	Rabbit
Clonality:	Polyclonal
Conjugate:	This LDHD antibody is un-conjugated
Application:	Western Blotting (WB), Flow Cytometry (FACS), Immunohistochemistry (Paraffin-embedded Sections) (IHC (p))

## Product Details

Immunogen:	This LDHD antibody is generated from rabbits immunized with a KLH conjugated synthetic peptide between 35-62 amino acids from the N-terminal region of human LDHD.
Clone:	RB27170
Isotype:	Ig Fraction
Purification:	This antibody is purified through a protein A column, followed by peptide affinity purification.

## Target Details

Target:	LDHD
Alternative Name:	LDHD ( <a href="#">LDHD Products</a> )

## Target Details

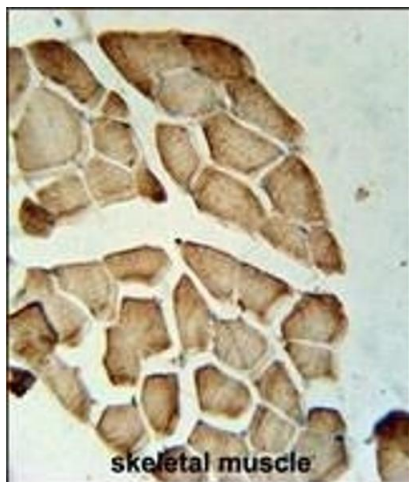
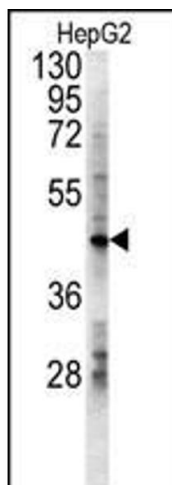
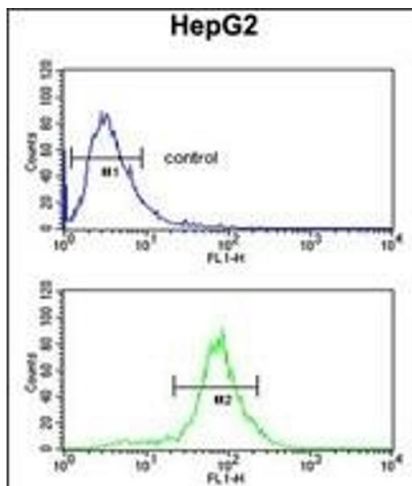
Background:	LDHD belongs to the D-isomer specific 2-hydroxyacid dehydrogenase family. The similar protein in yeast has both D-lactate and D-glycerate dehydrogenase activities. Alternative splicing occurs at this locus and two transcript variants encoding distinct isoforms have been identified. [provided by RefSeq].
Molecular Weight:	54871
Gene ID:	197257
NCBI Accession:	<a href="#">NP_705690</a> , <a href="#">NP_919417</a>
UniProt:	<a href="#">Q86WU2</a>
Pathways:	<a href="#">Ribonucleoside Biosynthetic Process</a>

## Application Details

Application Notes:	WB: 1:1000. IHC-P: 1:50~100. FC: 1:10~50
Restrictions:	For Research Use only

## Handling

Format:	Liquid
Buffer:	Purified polyclonal antibody supplied in PBS with 0.09 % (W/V) sodium azide.
Preservative:	Sodium azide
Precaution of Use:	This product contains Sodium azide: a POISONOUS AND HAZARDOUS SUBSTANCE which should be handled by trained staff only.
Storage:	4 °C,-20 °C
Storage Comment:	Maintain refrigerated at 2-8 °C for up to 6 months. For long term storage store at -20 °C in small aliquots to prevent freeze-thaw cycles.
Expiry Date:	6 months



### Flow Cytometry

**Image 1.** LDHD Antibody (N-term) (ABIN651920 and ABIN2840455) flow cytometric analysis of HepG2 cells (bottom histogram) compared to a negative control cell (top histogram). FITC-conjugated goat-anti-rabbit secondary antibodies were used for the analysis.

### Western Blotting

**Image 2.** LDHD Antibody (N-term) (ABIN651920 and ABIN2840455) western blot analysis in HepG2 cell line lysates (15 µg/lane). This demonstrates the LDHD antibody detected the LDHD protein (arrow).

### Immunohistochemistry (Paraffin-embedded Sections)

**Image 3.** LDHD Antibody (N-term) (ABIN651920 and ABIN2840455) immunohistochemistry analysis in formalin fixed and paraffin embedded human skeletal muscle followed by peroxidase conjugation of the secondary antibody and DAB staining. This data demonstrates the use of the LDHD Antibody (N-term) for immunohistochemistry. Clinical relevance has not been evaluated.