



Datasheet for ABIN651921
anti-FAM105B antibody (AA 99-128)



[Go to Product page](#)

3 Images

Overview

Quantity:	400 µL
Target:	FAM105B
Binding Specificity:	AA 99-128
Reactivity:	Human, Mouse
Host:	Rabbit
Clonality:	Polyclonal
Conjugate:	This FAM105B antibody is un-conjugated
Application:	Western Blotting (WB), Flow Cytometry (FACS), Immunohistochemistry (Paraffin-embedded Sections) (IHC (p))

Product Details

Immunogen:	This FAM105B antibody is generated from rabbits immunized with a KLH conjugated synthetic peptide between 99-128 amino acids from the Central region of human FAM105B.
Clone:	RB27178
Isotype:	Ig Fraction
Purification:	This antibody is purified through a protein A column, followed by peptide affinity purification.

Target Details

Target:	FAM105B
Alternative Name:	FAM105B (FAM105B Products)

Target Details

Molecular Weight:	40263
Gene ID:	90268
NCBI Accession:	NP_612357
UniProt:	Q96BN8

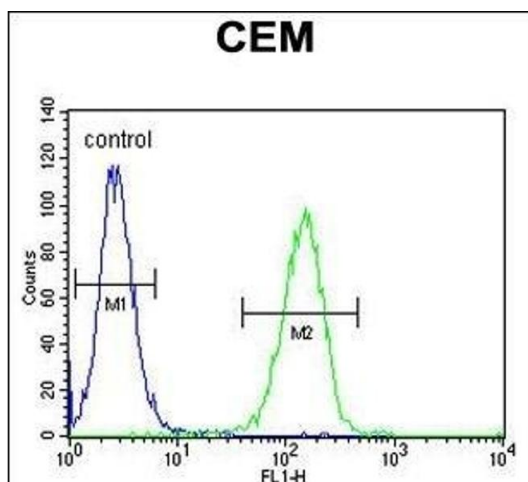
Application Details

Application Notes:	WB: 1:1000. IHC-P: 1:50~100. FC: 1:10~50
Restrictions:	For Research Use only

Handling

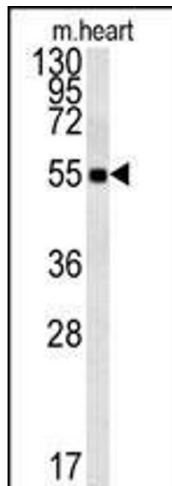
Format:	Liquid
Buffer:	Purified polyclonal antibody supplied in PBS with 0.09 % (W/V) sodium azide.
Preservative:	Sodium azide
Precaution of Use:	This product contains Sodium azide: a POISONOUS AND HAZARDOUS SUBSTANCE which should be handled by trained staff only.
Storage:	4 °C,-20 °C
Storage Comment:	Maintain refrigerated at 2-8 °C for up to 6 months. For long term storage store at -20 °C in small aliquots to prevent freeze-thaw cycles.
Expiry Date:	6 months

Images



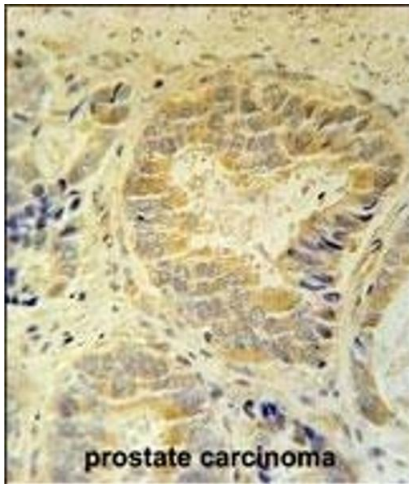
Flow Cytometry

Image 1. FB Antibody (Center) (ABIN651921 and ABIN2840456) flow cytometric analysis of CEM cells (right histogram) compared to a negative control cell (left histogram). FITC-conjugated goat-anti-rabbit secondary antibodies were used for the analysis.



Western Blotting

Image 2. FB Antibody (Center) (ABIN651921 and ABIN2840456) western blot analysis in mouse heart tissue lysates (15 µg/lane). This demonstrates the FB antibody detected FB protein (arrow).



Immunohistochemistry (Paraffin-embedded Sections)

Image 3. FB Antibody (Center) (ABIN651921 and ABIN2840456) immunohistochemistry analysis in formalin fixed and paraffin embedded human prostate carcinoma followed by peroxidase conjugation of the secondary antibody and DAB staining. This data demonstrates the use of the FB Antibody (Center) for immunohistochemistry. Clinical relevance has not been evaluated.