



[Go to Product page](#)

Datasheet for ABIN651922
anti-EBPL antibody (C-Term)

3 Images

Overview

Quantity:	400 µL
Target:	EBPL
Binding Specificity:	AA 177-206, C-Term
Reactivity:	Human
Host:	Rabbit
Clonality:	Polyclonal
Conjugate:	This EBPL antibody is un-conjugated
Application:	Western Blotting (WB), Flow Cytometry (FACS), Immunohistochemistry (Paraffin-embedded Sections) (IHC (p))

Product Details

Immunogen:	This EBPL antibody is generated from rabbits immunized with a KLH conjugated synthetic peptide between 177-206 amino acids from the C-terminal region of human EBPL.
Clone:	RB27183
Isotype:	Ig Fraction
Purification:	This antibody is purified through a protein A column, followed by peptide affinity purification.

Target Details

Target:	EBPL
Alternative Name:	EBPL (EBPL Products)

Target Details

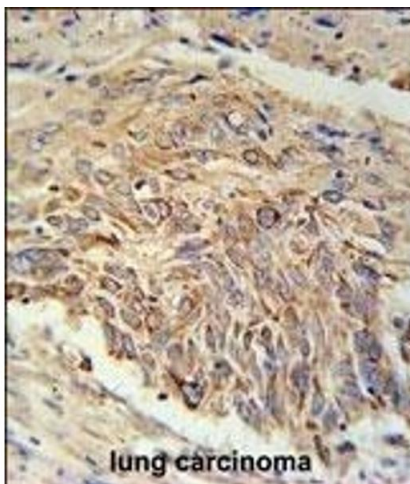
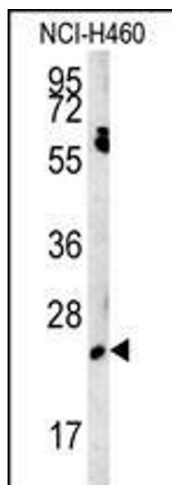
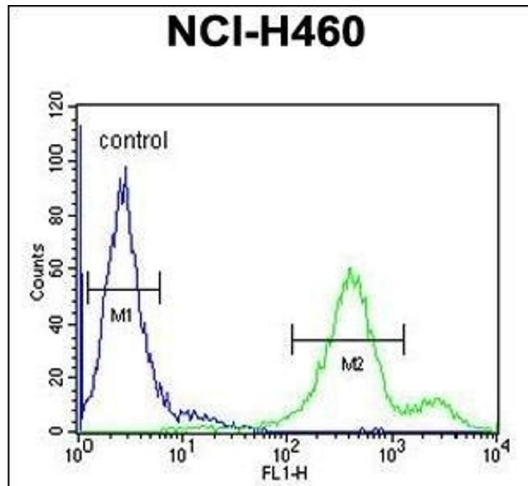
Background:	EBPL does not possess sterol isomerase activity and does not bind sigma ligands.
Molecular Weight:	23204
Gene ID:	84650
NCBI Accession:	NP_115954
UniProt:	Q9BY08

Application Details

Application Notes:	WB: 1:1000. IHC-P: 1:50~100. FC: 1:10~50
Restrictions:	For Research Use only

Handling

Format:	Liquid
Buffer:	Purified polyclonal antibody supplied in PBS with 0.09 % (W/V) sodium azide.
Preservative:	Sodium azide
Precaution of Use:	This product contains Sodium azide: a POISONOUS AND HAZARDOUS SUBSTANCE which should be handled by trained staff only.
Storage:	4 °C,-20 °C
Storage Comment:	Maintain refrigerated at 2-8 °C for up to 6 months. For long term storage store at -20 °C in small aliquots to prevent freeze-thaw cycles.
Expiry Date:	6 months



Flow Cytometry

Image 1. EBPL Antibody (C-term) (ABIN651922 and ABIN2840457) flow cytometric analysis of NCI- cells (right histogram) compared to a negative control cell (left histogram). FITC-conjugated goat-anti-rabbit secondary antibodies were used for the analysis.

Western Blotting

Image 2. EBPL Antibody (C-term) (ABIN651922 and ABIN2840457) western blot analysis in NCI- cell line lysates (15 µg/lane). This demonstrates the EBPL antibody detected the EBPL protein (arrow).

Immunohistochemistry (Paraffin-embedded Sections)

Image 3. EBPL Antibody (C-term) (ABIN651922 and ABIN2840457) immunohistochemistry analysis in formalin fixed and paraffin embedded human lung carcinoma followed by peroxidase conjugation of the secondary antibody and DAB staining. This data demonstrates the use of the EBPL Antibody (C-term) for immunohistochemistry. Clinical relevance has not been evaluated.