

Datasheet for ABIN651931
anti-LYSMD1 antibody (C-Term)



[Go to Product page](#)

2 Images

Overview

Quantity:	400 µL
Target:	LYSMD1
Binding Specificity:	AA 198-227, C-Term
Reactivity:	Human, Mouse
Host:	Rabbit
Clonality:	Polyclonal
Conjugate:	This LYSMD1 antibody is un-conjugated
Application:	Western Blotting (WB), Immunohistochemistry (Paraffin-embedded Sections) (IHC (p))

Product Details

Immunogen:	This LYSMD1 antibody is generated from rabbits immunized with a KLH conjugated synthetic peptide between 198-227 amino acids from the C-terminal region of human LYSMD1.
Clone:	RB27253
Isotype:	Ig Fraction
Predicted Reactivity:	B, Pr
Purification:	This antibody is purified through a protein A column, followed by peptide affinity purification.

Target Details

Target:	LYSMD1
Alternative Name:	LYSMD1 (LYSMD1 Products)

Target Details

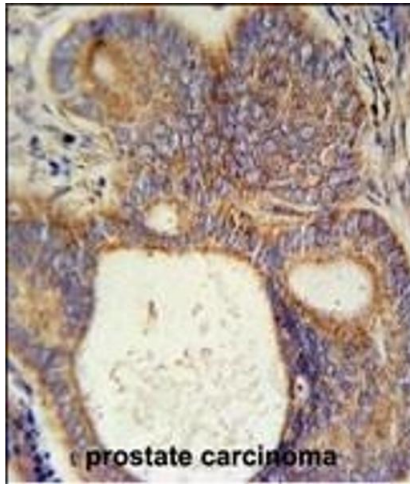
Background:	The specific function of this protein remains unknown but it may be involved in the chemical reactions and pathways resulting in the breakdown of macromolecules that form part of a cell wall.
Molecular Weight:	25003
Gene ID:	388695
NCBI Accession:	NP_001130015 , NP_997716
UniProt:	Q96S90

Application Details

Application Notes:	WB: 1:1000. IHC-P: 1:50~100
Restrictions:	For Research Use only

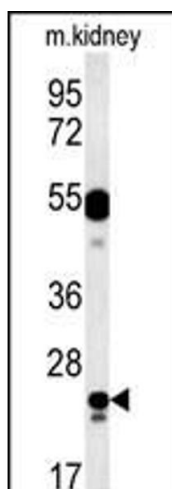
Handling

Format:	Liquid
Buffer:	Purified polyclonal antibody supplied in PBS with 0.09 % (W/V) sodium azide.
Preservative:	Sodium azide
Precaution of Use:	This product contains Sodium azide: a POISONOUS AND HAZARDOUS SUBSTANCE which should be handled by trained staff only.
Storage:	4 °C, -20 °C
Storage Comment:	Maintain refrigerated at 2-8 °C for up to 6 months. For long term storage store at -20 °C in small aliquots to prevent freeze-thaw cycles.
Expiry Date:	6 months



Immunohistochemistry (Paraffin-embedded Sections)

Image 1. LYSDM1 Antibody (C-term) (ABIN651931 and ABIN2840459) immunohistochemistry analysis in formalin fixed and paraffin embedded human prostate carcinoma followed by peroxidase conjugation of the secondary antibody and DAB staining. This data demonstrates the use of the LYSDM1 Antibody (C-term) for immunohistochemistry. Clinical relevance has not been evaluated.



Western Blotting

Image 2. LYSDM1 Antibody (C-term) (ABIN651931 and ABIN2840459) western blot analysis in mouse kidney tissue lysates (15 µg/lane). This demonstrates the LYSDM1 antibody detected LYSDM1 protein (arrow).