

Datasheet for ABIN651932
anti-GAL antibody (C-Term)

3 Images

[Go to Product page](#)

Overview

Quantity:	400 µL
Target:	GAL
Binding Specificity:	AA 73-101, C-Term
Reactivity:	Human, Mouse
Host:	Rabbit
Clonality:	Polyclonal
Conjugate:	This GAL antibody is un-conjugated
Application:	Western Blotting (WB), Immunofluorescence (IF), Flow Cytometry (FACS)

Product Details

Immunogen:	This GAL antibody is generated from rabbits immunized with a KLH conjugated synthetic peptide between 73-101 amino acids from the C-terminal region of human GAL.
Clone:	RB15038
Isotype:	Ig Fraction
Purification:	This antibody is prepared by Saturated Ammonium Sulfate (SAS) precipitation followed by dialysis against PBS.

Target Details

Target:	GAL
Alternative Name:	GAL (GAL Products)

Target Details

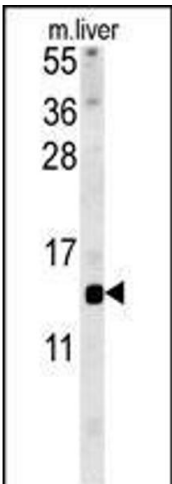
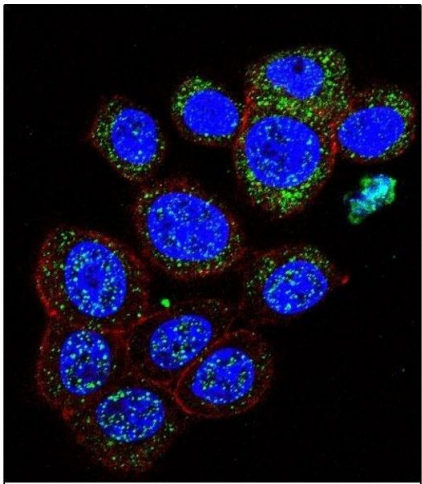
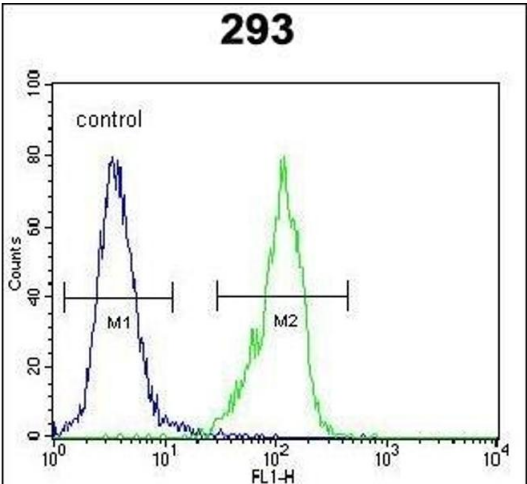
Background:	Galanin is small neuropeptide that functions as a cellular messenger within the central and peripheral nervous systems, modulating diverse physiologic functions (Mechenthaler, 2008 [PubMed 18500643]).
Molecular Weight:	13302
Gene ID:	51083
NCBI Accession:	NP_057057
UniProt:	P22466
Pathways:	Hormone Transport , Regulation of Hormone Metabolic Process , Feeding Behaviour

Application Details

Application Notes:	IF: 1:10~50. WB: 1:1000. FC: 1:10~50
Restrictions:	For Research Use only

Handling

Format:	Liquid
Buffer:	Purified polyclonal antibody supplied in PBS with 0.09 % (W/V) sodium azide.
Preservative:	Sodium azide
Precaution of Use:	This product contains Sodium azide: a POISONOUS AND HAZARDOUS SUBSTANCE which should be handled by trained staff only.
Storage:	4 °C,-20 °C
Storage Comment:	Maintain refrigerated at 2-8 °C for up to 6 months. For long term storage store at -20 °C in small aliquots to prevent freeze-thaw cycles.
Expiry Date:	6 months



Flow Cytometry

Image 1. GAL Antibody (C-term) (ABIN651932 and ABIN2840460) flow cytometric analysis of 293 cells (right histogram) compared to a negative control cell (left histogram). FITC-conjugated goat-anti-rabbit secondary antibodies were used for the analysis.

Immunofluorescence

Image 2. Confocal immunofluorescent analysis of GAL Antibody (C-term) (ABIN651932 and ABIN2840460) with 293 cell followed by Alexa Fluor 488-conjugated goat anti-rabbit IgG (green). Actin filaments have been labeled with Alexa Fluor 555 phalloidin (red). DAPI was used to stain the cell nuclear (blue).

Western Blotting

Image 3. GAL Antibody (C-term) (ABIN651932 and ABIN2840460) western blot analysis in mouse liver tissue lysates (15 µg/lane). This demonstrates the GAL antibody detected GAL protein (arrow).