



[Go to Product page](#)

Datasheet for ABIN651936
anti-FOXC2 antibody (AA 159-186)

3 Images

Overview

Quantity:	400 µL
Target:	FOXC2
Binding Specificity:	AA 159-186
Reactivity:	Human
Host:	Rabbit
Clonality:	Polyclonal
Conjugate:	This FOXC2 antibody is un-conjugated
Application:	Western Blotting (WB), Flow Cytometry (FACS), Immunohistochemistry (Paraffin-embedded Sections) (IHC (p))

Product Details

Immunogen:	This FOXC2 antibody is generated from rabbits immunized with a KLH conjugated synthetic peptide between 159-186 amino acids from the Central region of human FOXC2.
Clone:	RB20052
Isotype:	Ig Fraction
Purification:	This antibody is purified through a protein A column, followed by peptide affinity purification.

Target Details

Target:	FOXC2
Alternative Name:	FOXC2 (FOXC2 Products)

Target Details

Background: FOXC2 belongs to the forkhead family of transcription factors which is characterized by a distinct DNA-binding forkhead domain. The specific function of this gene has not yet been determined, however, it may play a role in the development of mesenchymal tissues.

Molecular Weight: 53719

Gene ID: 2303

NCBI Accession: [NP_005242](#)

UniProt: [Q99958](#)

Application Details

Application Notes: WB: 1:1000. IHC-P: 1:50~100. FC: 1:10~50

Restrictions: For Research Use only

Handling

Format: Liquid

Buffer: Purified polyclonal antibody supplied in PBS with 0.09 % (W/V) sodium azide.

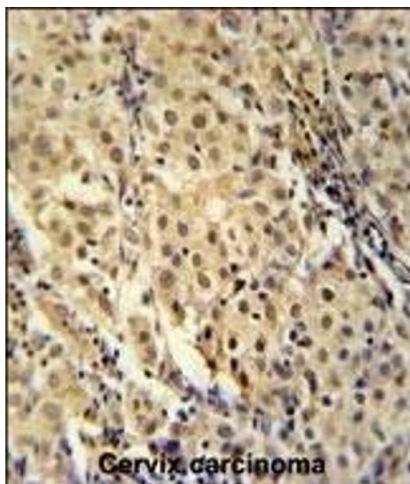
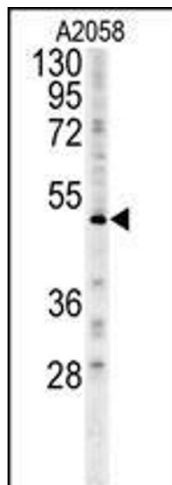
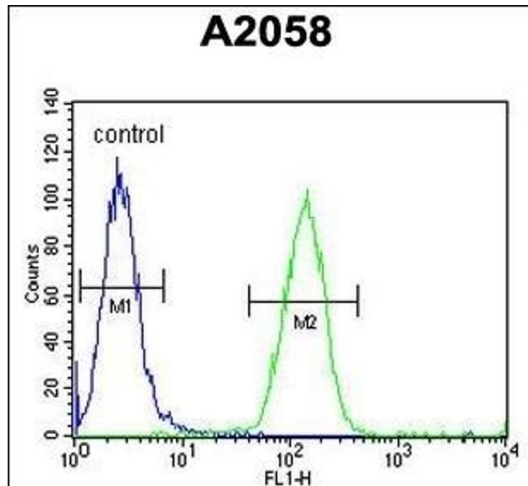
Preservative: Sodium azide

Precaution of Use: This product contains Sodium azide: a POISONOUS AND HAZARDOUS SUBSTANCE which should be handled by trained staff only.

Storage: 4 °C, -20 °C

Storage Comment: Maintain refrigerated at 2-8 °C for up to 6 months. For long term storage store at -20 °C in small aliquots to prevent freeze-thaw cycles.

Expiry Date: 6 months



Flow Cytometry

Image 1. FOXC2 Antibody (Center) (ABIN651936 and ABIN2840463) flow cytometric analysis of cells (right histogram) compared to a negative control cell (left histogram). FITC-conjugated goat-anti-rabbit secondary antibodies were used for the analysis.

Western Blotting

Image 2. FOXC2 Antibody (Center) (ABIN651936 and ABIN2840463) western blot analysis in cell line lysates (15 μ g/lane). This demonstrates the FOXC2 antibody detected the FOXC2 protein (arrow).

Immunohistochemistry (Paraffin-embedded Sections)

Image 3. FOXC2 Antibody (Center) (ABIN651936 and ABIN2840463) immunohistochemistry analysis in formalin fixed and paraffin embedded human cervix carcinoma followed by peroxidase conjugation of the secondary antibody and DAB staining. This data demonstrates the use of the FOXC2 Antibody (Center) for immunohistochemistry. Clinical relevance has not been evaluated.