

Datasheet for ABIN651973
anti-RCN3 antibody (AA 134-163)[Go to Product page](#)

2 Images

Overview

Quantity:	400 µL
Target:	RCN3
Binding Specificity:	AA 134-163
Reactivity:	Human, Mouse
Host:	Rabbit
Clonality:	Polyclonal
Conjugate:	This RCN3 antibody is un-conjugated
Application:	Western Blotting (WB), Flow Cytometry (FACS)

Product Details

Immunogen:	This RCN3 antibody is generated from rabbits immunized with a KLH conjugated synthetic peptide between 134-163 amino acids from the Central region of human RCN3.
Clone:	RB27325
Isotype:	Ig Fraction
Predicted Reactivity:	B, Rat
Purification:	This antibody is purified through a protein A column, followed by peptide affinity purification.

Target Details

Target:	RCN3
Alternative Name:	RCN3 (RCN3 Products)

Target Details

Background:	Calcipressin 3 inhibits calcineurin dependent transcriptional responses by binding to the catalytic domain of calcineurin A, and may play a role during central nervous system development. Highest expression occurs in heart, skeletal muscle kidney, liver and peripheral blood leukocytes.
-------------	--

Molecular Weight:	37493
-------------------	-------

Gene ID:	57333
----------	-------

NCBI Accession:	NP_065701
-----------------	---------------------------

UniProt:	Q96D15
----------	------------------------

Application Details

Application Notes:	WB: 1:2000. FC: 1:10~50
--------------------	-------------------------

Restrictions:	For Research Use only
---------------	-----------------------

Handling

Format:	Liquid
---------	--------

Buffer:	Purified polyclonal antibody supplied in PBS with 0.09 % (W/V) sodium azide.
---------	--

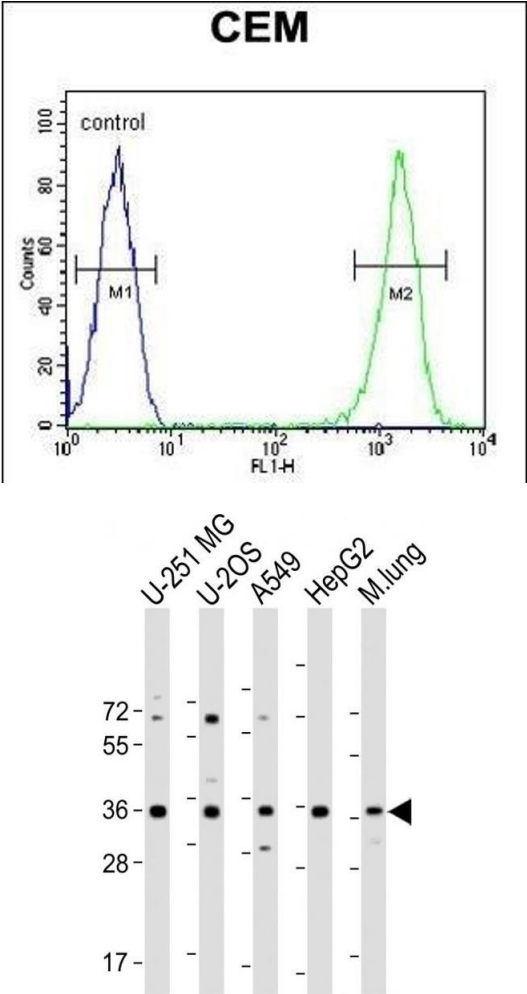
Preservative:	Sodium azide
---------------	--------------

Precaution of Use:	This product contains Sodium azide: a POISONOUS AND HAZARDOUS SUBSTANCE which should be handled by trained staff only.
--------------------	--

Storage:	4 °C,-20 °C
----------	-------------

Storage Comment:	Maintain refrigerated at 2-8 °C for up to 6 months. For long term storage store at -20 °C in small aliquots to prevent freeze-thaw cycles.
------------------	--

Expiry Date:	6 months
--------------	----------



Flow Cytometry

Image 1. RCN3 Antibody (Center) (ABIN651973 and ABIN2840479) flow cytometric analysis of CEM cells (right histogram) compared to a negative control cell (left histogram).FITC-conjugated goat-anti-rabbit secondary antibodies were used for the analysis.

Western Blotting

Image 2. All lanes : Anti-RCN3 Antibody (Center) at 1:2000 dilution Lane 1: U-251 MG whole cell lysate Lane 2: U-2OS whole cell lysate Lane 3: A549 whole cell lysate Lane 4: HepG2 whole cell lysate Lane 5: Mouse lung lysate Lysates/proteins at 20 µg per lane. Secondary Goat Anti-Rabbit IgG, (H+L), Peroxidase conjugated at 1/10000 dilution. Predicted band size : 37 kDa Blocking/Dilution buffer: 5 % NFDM/TBST.