



[Go to Product page](#)

Datasheet for ABIN651991

anti-LOH12CR1 antibody (C-Term)

3 Images

Overview

Quantity:	400 µL
Target:	LOH12CR1
Binding Specificity:	AA 167-196, C-Term
Reactivity:	Human
Host:	Rabbit
Clonality:	Polyclonal
Conjugate:	This LOH12CR1 antibody is un-conjugated
Application:	Western Blotting (WB), Flow Cytometry (FACS), Immunohistochemistry (Paraffin-embedded Sections) (IHC (p))

Product Details

Immunogen:	This LOH12CR1 antibody is generated from rabbits immunized with a KLH conjugated synthetic peptide between 167-196 amino acids from the C-terminal region of human LOH12CR1.
Clone:	RB27375
Isotype:	Ig Fraction
Purification:	This antibody is purified through a protein A column, followed by peptide affinity purification.

Target Details

Target:	LOH12CR1
Alternative Name:	LOH12CR1 (LOH12CR1 Products)

Target Details

Molecular Weight:	22222
Gene ID:	118426
NCBI Accession:	NP_477517
UniProt:	Q969J3

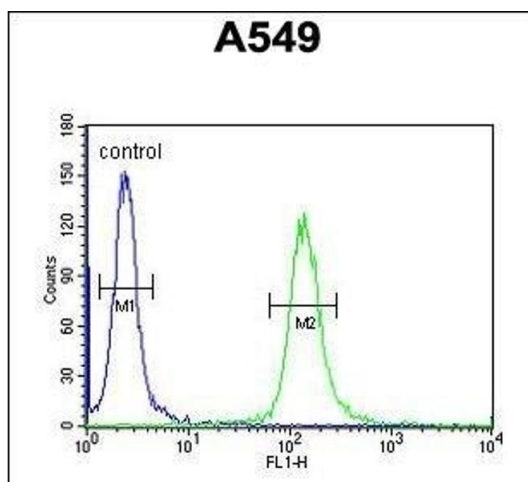
Application Details

Application Notes:	WB: 1:1000. IHC-P: 1:50~100. FC: 1:10~50
Restrictions:	For Research Use only

Handling

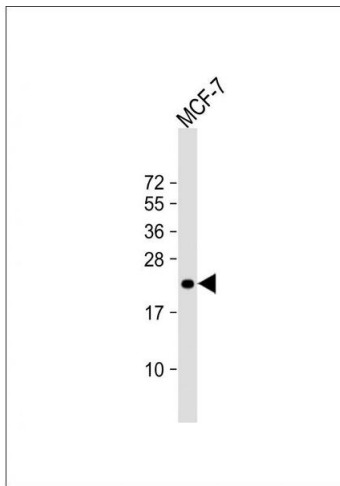
Format:	Liquid
Buffer:	Purified polyclonal antibody supplied in PBS with 0.09 % (W/V) sodium azide.
Preservative:	Sodium azide
Precaution of Use:	This product contains Sodium azide: a POISONOUS AND HAZARDOUS SUBSTANCE which should be handled by trained staff only.
Storage:	4 °C,-20 °C
Storage Comment:	Maintain refrigerated at 2-8 °C for up to 6 months. For long term storage store at -20 °C in small aliquots to prevent freeze-thaw cycles.
Expiry Date:	6 months

Validation report #100013 for Immunofluorescence (IF)



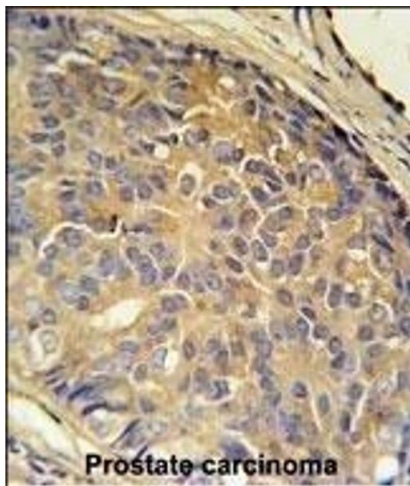
Flow Cytometry

Image 1. LOH12CR1 Antibody (C-term) (ABIN651991 and ABIN2840485) flow cytometric analysis of A549 cells (right histogram) compared to a negative control cell (left histogram). FITC-conjugated goat-anti-rabbit secondary antibodies were used for the analysis.



Western Blotting

Image 2. Anti-LOH12CR1 Antibody (C-term) at 1:1000 dilution + MCF-7 whole cell lysate Lysates/proteins at 20 µg per lane. Secondary Goat Anti-Rabbit IgG, (H+L), Peroxidase conjugated at 1/10000 dilution. Predicted band size : 22 kDa Blocking/Dilution buffer: 5 % NFDN/TBST.



Immunohistochemistry (Paraffin-embedded Sections)

Image 3. LOH12CR1 Antibody (C-term) (ABIN651991 and ABIN2840485) immunohistochemistry analysis in formalin fixed and paraffin embedded human prostate carcinoma followed by peroxidase conjugation of the secondary antibody and DAB staining. This data demonstrates the use of the LOH12CR1 Antibody (C-term) for immunohistochemistry. Clinical relevance has not been evaluated.