

Datasheet for ABIN651998
anti-FAM26E antibody (C-Term)[Go to Product page](#)

2 Images

Overview

Quantity:	400 µL
Target:	FAM26E
Binding Specificity:	AA 214-243, C-Term
Reactivity:	Human, Mouse
Host:	Rabbit
Clonality:	Polyclonal
Conjugate:	This FAM26E antibody is un-conjugated
Application:	Western Blotting (WB), Flow Cytometry (FACS)

Product Details

Immunogen:	This FAM26E antibody is generated from rabbits immunized with a KLH conjugated synthetic peptide between 214-243 amino acids from the C-terminal region of human FAM26E.
Clone:	RB27412
Isotype:	Ig Fraction
Purification:	This antibody is purified through a protein A column, followed by peptide affinity purification.

Target Details

Target:	FAM26E
Alternative Name:	FAM26E (FAM26E Products)
Molecular Weight:	35170

Target Details

Gene ID: 254228

NCBI Accession: [NP_714922](#)

UniProt: [Q8N5C1](#)

Application Details

Application Notes: WB: 1:1000. FC: 1:10~50

Restrictions: For Research Use only

Handling

Format: Liquid

Buffer: Purified polyclonal antibody supplied in PBS with 0.09 % (W/V) sodium azide.

Preservative: Sodium azide

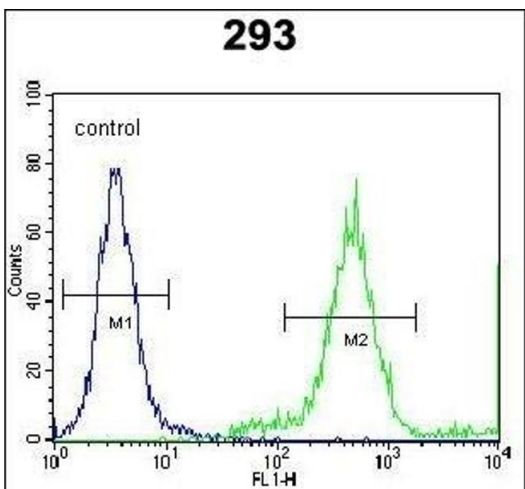
Precaution of Use: This product contains Sodium azide: a POISONOUS AND HAZARDOUS SUBSTANCE which should be handled by trained staff only.

Storage: 4 °C, -20 °C

Storage Comment: Maintain refrigerated at 2-8 °C for up to 6 months. For long term storage store at -20 °C in small aliquots to prevent freeze-thaw cycles.

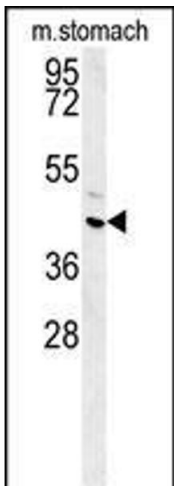
Expiry Date: 6 months

Validation report #100013 for Immunofluorescence (IF)



Flow Cytometry

Image 1. FE Antibody (C-term) (ABIN651998 and ABIN2840489) flow cytometric analysis of 293 cells (right histogram) compared to a negative control cell (left histogram). FITC-conjugated goat-anti-rabbit secondary antibodies were used for the analysis.



Western Blotting

Image 2. FE Antibody (C-term) (ABIN651998 and ABIN2840489) western blot analysis in mouse stomach tissue lysates (15 µg/lane). This demonstrates the FE antibody detected FE protein (arrow).