



[Go to Product page](#)

Datasheet for ABIN651999

anti-SHISA7 antibody (AA 308-337)

1 Image

Overview

Quantity:	400 µL
Target:	SHISA7
Binding Specificity:	AA 308-337
Reactivity:	Human, Mouse
Host:	Rabbit
Clonality:	Polyclonal
Conjugate:	This SHISA7 antibody is un-conjugated
Application:	Western Blotting (WB)

Product Details

Immunogen:	This hCG_2039146 antibody is generated from rabbits immunized with a KLH conjugated synthetic peptide between 308-337 amino acids from the Central region of human hCG_2039146.
Clone:	RB27416
Isotype:	Ig Fraction
Purification:	This antibody is purified through a protein A column, followed by peptide affinity purification.

Target Details

Target:	SHISA7
Alternative Name:	hCG_2039146 (SHISA7 Products)

Target Details

Molecular Weight:	56214
Gene ID:	729956
NCBI Accession:	NP_001138648
UniProt:	A6NL88

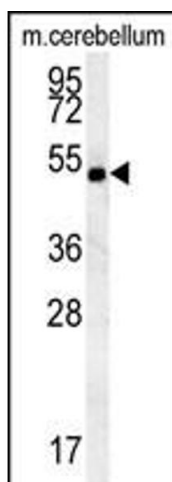
Application Details

Application Notes:	WB: 1:1000
Restrictions:	For Research Use only

Handling

Format:	Liquid
Buffer:	Purified polyclonal antibody supplied in PBS with 0.09 % (W/V) sodium azide.
Preservative:	Sodium azide
Precaution of Use:	This product contains Sodium azide: a POISONOUS AND HAZARDOUS SUBSTANCE which should be handled by trained staff only.
Storage:	4 °C,-20 °C
Storage Comment:	Maintain refrigerated at 2-8 °C for up to 6 months. For long term storage store at -20 °C in small aliquots to prevent freeze-thaw cycles.
Expiry Date:	6 months

Validation report #100013 for Immunofluorescence (IF)



Western Blotting

Image 1. hCG_2039146 Antibody (Center) (ABIN651999 and ABIN2840490) western blot analysis in mouse cerebellum tissue lysates (15 µg/lane). This demonstrates the CG_2039146 antibody detected CG_2039146 protein (arrow).