

Datasheet for ABIN652003

**anti-ARHGEF3 antibody (AA 211-240)**[Go to Product page](#)**2** Images**1** Publication

## Overview

Quantity:	400 µL
Target:	ARHGEF3
Binding Specificity:	AA 211-240
Reactivity:	Human
Host:	Rabbit
Clonality:	Polyclonal
Conjugate:	This ARHGEF3 antibody is un-conjugated
Application:	Western Blotting (WB), Immunohistochemistry (Paraffin-embedded Sections) (IHC (p))

## Product Details

Immunogen:	This ARHGEF3 antibody is generated from rabbits immunized with a KLH conjugated synthetic peptide between 211-240 amino acids from the Central region of human ARHGEF3.
Clone:	RB27451
Isotype:	Ig Fraction
Predicted Reactivity:	M
Purification:	This antibody is purified through a protein A column, followed by peptide affinity purification.

## Target Details

Target:	ARHGEF3
Alternative Name:	ARHGEF3 ( <a href="#">ARHGEF3 Products</a> )

## Target Details

Background:	<p>Rho-like GTPases are involved in a variety of cellular processes, and they are activated by binding GTP and inactivated by conversion of GTP to GDP by their intrinsic GTPase activity. Guanine nucleotide exchange factors (GEFs) accelerate the GTPase activity of Rho GTPases by catalyzing their release of bound GDP. This gene encodes a guanine nucleotide exchange factor, which specifically activates two members of the Rho GTPase family: RHOA and RHOB, both of which have a role in bone cell biology. It has been identified that genetic variation in this gene plays a role in the determination of bone mineral density (BMD), indicating the implication of this gene in postmenopausal osteoporosis. Alternatively spliced transcript variants encoding different isoforms have been found for this gene.</p>
Molecular Weight:	59783
Gene ID:	50650
NCBI Accession:	<a href="#">NP_001122087</a> , <a href="#">NP_001122088</a> , <a href="#">NP_062455</a>
UniProt:	<a href="#">Q9NR81</a>
Pathways:	<a href="#">Neurotrophin Signaling Pathway</a>

## Application Details

Application Notes:	WB: 1:1000. IHC-P: 1:50~100
Restrictions:	For Research Use only

## Handling

Format:	Liquid
Buffer:	Purified polyclonal antibody supplied in PBS with 0.09 % (W/V) sodium azide.
Preservative:	Sodium azide
Precaution of Use:	This product contains Sodium azide: a POISONOUS AND HAZARDOUS SUBSTANCE which should be handled by trained staff only.
Storage:	4 °C,-20 °C
Storage Comment:	Maintain refrigerated at 2-8 °C for up to 6 months. For long term storage store at -20 °C in small aliquots to prevent freeze-thaw cycles.
Expiry Date:	6 months

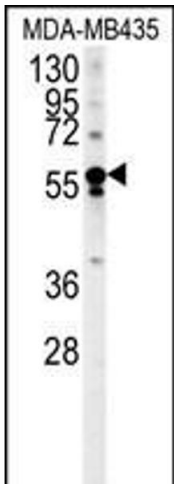
Product cited in:                   Liu, Zheng, Cai, Guo, Lin, Chen, Liao, Kung, Zeng, Xie: "The putative tumor activator ARHGEF3 promotes nasopharyngeal carcinoma cell pathogenesis by inhibiting cellular apoptosis." in: **Oncotarget**, Vol. 7, Issue 18, pp. 25836-48, (2017) ([PubMed](#)).

Validation report #100013 for Immunofluorescence (IF)



Immunohistochemistry (Paraffin-embedded Sections)

**Image 1.** ARHGEF3 Antibody (Center) (ABIN652003 and ABIN2840492) immunohistochemistry analysis in formalin fixed and paraffin embedded human skeletal muscle followed by peroxidase conjugation of the secondary antibody and DAB staining. This data demonstrates the use of the ARHGEF3 Antibody (Center) for immunohistochemistry. Clinical relevance has not been evaluated.



Western Blotting

**Image 2.** ARHGEF3 Antibody (Center) (ABIN652003 and ABIN2840492) western blot analysis in MDA-M cell line lysates (35 µg/lane). This demonstrates the ARHGEF3 antibody detected the ARHGEF3 protein (arrow).