

Datasheet for ABIN652020
anti-Enamelin antibody (C-Term)

3 Images

1 Publication

[Go to Product page](#)

Overview

Quantity:	400 µL
Target:	Enamelin (ENAM)
Binding Specificity:	AA 1097-1126, C-Term
Reactivity:	Human
Host:	Rabbit
Clonality:	Polyclonal
Conjugate:	This Enamelin antibody is un-conjugated
Application:	Western Blotting (WB), Flow Cytometry (FACS), Immunohistochemistry (Paraffin-embedded Sections) (IHC (p))

Product Details

Immunogen:	This ENAM antibody is generated from rabbits immunized with a KLH conjugated synthetic peptide between 1097-1126 amino acids from the C-terminal region of human ENAM.
Clone:	RB20947
Isotype:	Ig Fraction
Purification:	This antibody is prepared by Saturated Ammonium Sulfate (SAS) precipitation followed by dialysis against PBS.

Target Details

Target:	Enamelin (ENAM)
Alternative Name:	ENAM (ENAM Products)

Target Details

Molecular Weight:	128785
Gene ID:	10117
NCBI Accession:	NP_114095
UniProt:	Q9NRM1

Application Details

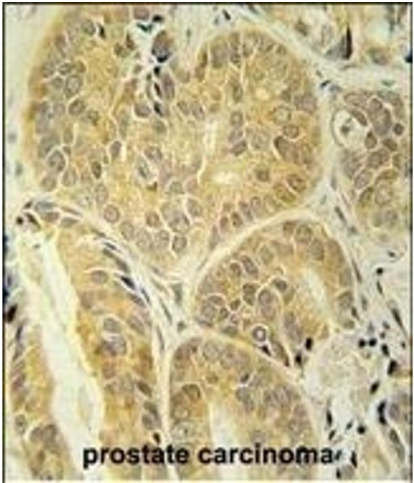
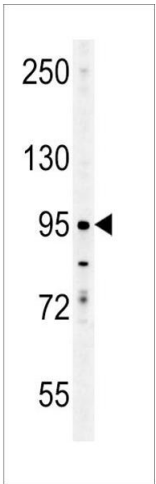
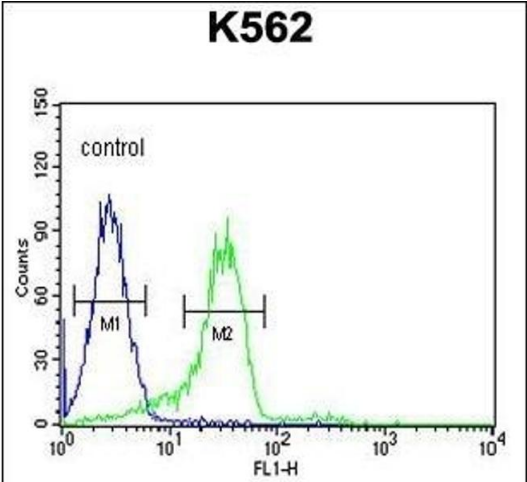
Application Notes:	WB: 1:1000. IHC-P: 1:50~100. FC: 1:10~50
Restrictions:	For Research Use only

Handling

Format:	Liquid
Buffer:	Purified polyclonal antibody supplied in PBS with 0.09 % (W/V) sodium azide.
Preservative:	Sodium azide
Precaution of Use:	This product contains Sodium azide: a POISONOUS AND HAZARDOUS SUBSTANCE which should be handled by trained staff only.
Storage:	4 °C, -20 °C
Storage Comment:	Maintain refrigerated at 2-8 °C for up to 6 months. For long term storage store at -20 °C in small aliquots to prevent freeze-thaw cycles.
Expiry Date:	6 months

Publications

Product cited in:	Xu, Han, Epstein, Liu: "Regulation of PDK mRNA by high fatty acid and glucose in pancreatic islets." in: Biochemical and biophysical research communications , Vol. 344, Issue 3, pp. 827-33, (2006) (PubMed).
-------------------	---



Flow Cytometry

Image 1. EN Antibody (C-term) (ABIN652020 and ABIN2840500) flow cytometric analysis of K562 cells (right histogr) compared to a negative control cell (left histogr).FITC-conjugated goat-anti-rabbit secondary antibodies were used for the analysis.

Western Blotting

Image 2. EN Antibody (C-term) (ABIN652020 and ABIN2840500) western blot analysis in K562 cell line lysates (35 µg/lane).This demonstrates the EN antibody detected the EN protein (arrow).

Immunohistochemistry (Paraffin-embedded Sections)

Image 3. EN Antibody (C-term) (ABIN652020 and ABIN2840500) immunohistochemistry analysis in formalin fixed and paraffin embedded human prostate carcinoma followed by peroxidase conjugation of the secondary antibody and DAB staining. This data demonstrates the use of the EN Antibody (C-term) for immunohistochemistry. Clinical relevance has not been evaluated.