

Datasheet for ABIN652033
anti-KCNJ6 antibody (AA 26-55)

3 Images

[Go to Product page](#)

Overview

Quantity:	400 µL
Target:	KCNJ6
Binding Specificity:	AA 26-55
Reactivity:	Human
Host:	Rabbit
Clonality:	Polyclonal
Conjugate:	This KCNJ6 antibody is un-conjugated
Application:	Western Blotting (WB), Flow Cytometry (FACS), Immunohistochemistry (Paraffin-embedded Sections) (IHC (p))

Product Details

Immunogen:	This KCNJ6 antibody is generated from rabbits immunized with a KLH conjugated synthetic peptide between 26-55 amino acids from the Central region of human KCNJ6.
Clone:	RB21716
Isotype:	Ig Fraction
Predicted Reactivity:	M, Rat
Purification:	This antibody is purified through a protein A column, followed by peptide affinity purification.

Target Details

Target:	KCNJ6
---------	-------

Target Details

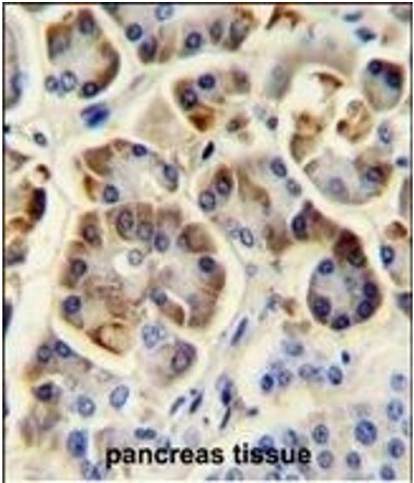
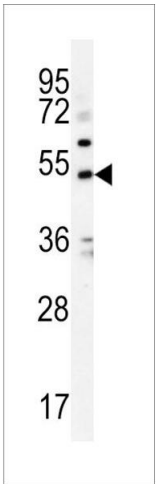
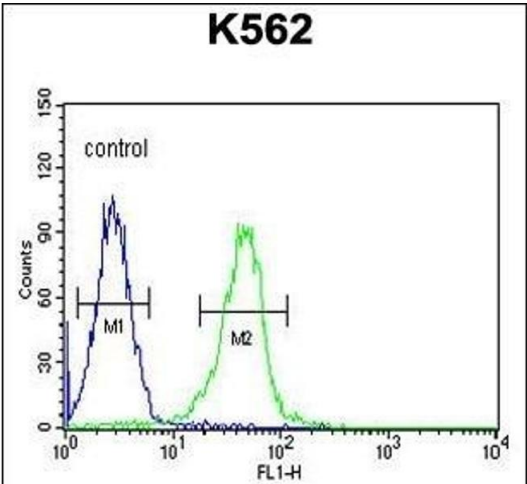
Alternative Name:	KCNJ6 (KCNJ6 Products)
Molecular Weight:	48451
Gene ID:	3763
NCBI Accession:	NP_002231
UniProt:	P48051

Application Details

Application Notes:	WB: 1:1000. IHC-P: 1:50~100. FC: 1:10~50
Restrictions:	For Research Use only

Handling

Format:	Liquid
Buffer:	Purified polyclonal antibody supplied in PBS with 0.09 % (W/V) sodium azide.
Preservative:	Sodium azide
Precaution of Use:	This product contains Sodium azide: a POISONOUS AND HAZARDOUS SUBSTANCE which should be handled by trained staff only.
Storage:	4 °C,-20 °C
Storage Comment:	Maintain refrigerated at 2-8 °C for up to 6 months. For long term storage store at -20 °C in small aliquots to prevent freeze-thaw cycles.
Expiry Date:	6 months



Flow Cytometry

Image 1. KCNJ6 Antibody (Center) (ABIN652033 and ABIN2840507) flow cytometric analysis of K562 cells (right histogram) compared to a negative control cell (left histogram). FITC-conjugated goat-anti-rabbit secondary antibodies were used for the analysis.

Western Blotting

Image 2. KCNJ6 Antibody (Center) (ABIN652033 and ABIN2840507) western blot analysis in K562 cell line lysates (35 µg/lane). This demonstrates the KCNJ6 antibody detected the KCNJ6 protein (arrow).

Immunohistochemistry (Paraffin-embedded Sections)

Image 3. KCNJ6 Antibody (Center) (ABIN652033 and ABIN2840507) immunohistochemistry analysis in formalin fixed and paraffin embedded human pancreas tissue followed by peroxidase conjugation of the secondary antibody and DAB staining. This data demonstrates the use of the KCNJ6 Antibody (Center) for immunohistochemistry. Clinical relevance has not been evaluated.