



[Go to Product page](#)

Datasheet for ABIN652038

anti-LRRC52 antibody (C-Term)

1 Image

Overview

Quantity:	400 µL
Target:	LRRC52
Binding Specificity:	AA 267-296, C-Term
Reactivity:	Human
Host:	Rabbit
Clonality:	Polyclonal
Conjugate:	This LRRC52 antibody is un-conjugated
Application:	Western Blotting (WB)

Product Details

Immunogen:	This LRRC52 antibody is generated from rabbits immunized with a KLH conjugated synthetic peptide between 267-296 amino acids from the C-terminal region of human LRRC52.
Clone:	RB21948
Isotype:	Ig Fraction
Purification:	This antibody is purified through a protein A column, followed by peptide affinity purification.

Target Details

Target:	LRRC52
Alternative Name:	LRRC52 (LRRC52 Products)
Molecular Weight:	35126

Target Details

Gene ID: 440699

NCBI Accession: [NP_001005214](#)

UniProt: [Q8N7C0](#)

Application Details

Application Notes: WB: 1:1000

Restrictions: For Research Use only

Handling

Format: Liquid

Buffer: Purified polyclonal antibody supplied in PBS with 0.09 % (W/V) sodium azide.

Preservative: Sodium azide

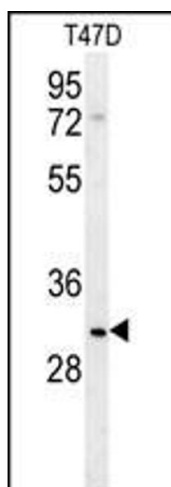
Precaution of Use: This product contains Sodium azide: a POISONOUS AND HAZARDOUS SUBSTANCE which should be handled by trained staff only.

Storage: 4 °C, -20 °C

Storage Comment: Maintain refrigerated at 2-8 °C for up to 6 months. For long term storage store at -20 °C in small aliquots to prevent freeze-thaw cycles.

Expiry Date: 6 months

Images



Western Blotting

Image 1. LRRC52 Antibody (C-term) (ABIN652038 and ABIN2840512) western blot analysis in T47D cell line lysates (35 µg/lane). This demonstrates the LRRC52 antibody detected the LRRC52 protein (arrow).