

Datasheet for ABIN652055
anti-Claudin 12 antibody (N-Term)[Go to Product page](#)

2 Images

Overview

| | |
|----------------------|--|
| Quantity: | 400 µL |
| Target: | Claudin 12 (CLDN12) |
| Binding Specificity: | AA 19-46, N-Term |
| Reactivity: | Human |
| Host: | Rabbit |
| Clonality: | Polyclonal |
| Conjugate: | This Claudin 12 antibody is un-conjugated |
| Application: | Flow Cytometry (FACS), Western Blotting (WB) |

Product Details

| | |
|-----------------------|--|
| Immunogen: | This CLDN12 antibody is generated from rabbits immunized with a KLH conjugated synthetic peptide between 19-46 amino acids from the N-terminal region of human CLDN12. |
| Clone: | RB22446 |
| Isotype: | Ig Fraction |
| Predicted Reactivity: | B, M |
| Purification: | This antibody is purified through a protein A column, followed by peptide affinity purification. |

Target Details

| | |
|-------------------|--|
| Target: | Claudin 12 (CLDN12) |
| Alternative Name: | CLDN12 (CLDN12 Products) |

Target Details

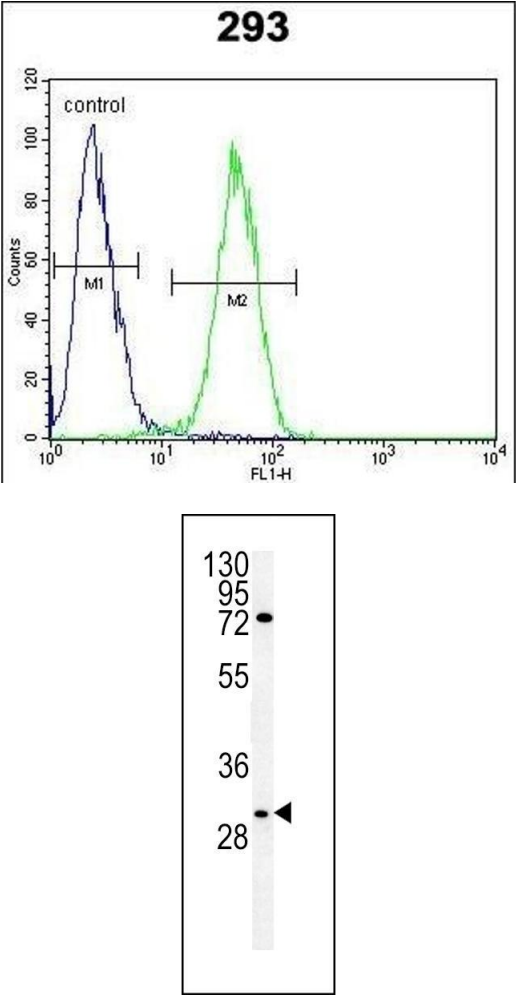
| | |
|-------------------|---|
| Molecular Weight: | 27110 |
| Gene ID: | 9069 |
| NCBI Accession: | NP_001172001 , NP_001172002 , NP_036261 |
| UniProt: | P56749 |
| Pathways: | Cell-Cell Junction Organization |

Application Details

| | |
|--------------------|-------------------------|
| Application Notes: | WB: 1:1000. FC: 1:10~50 |
| Restrictions: | For Research Use only |

Handling

| | |
|--------------------|--|
| Format: | Liquid |
| Buffer: | Purified polyclonal antibody supplied in PBS with 0.09 % (W/V) sodium azide. |
| Preservative: | Sodium azide |
| Precaution of Use: | This product contains Sodium azide: a POISONOUS AND HAZARDOUS SUBSTANCE which should be handled by trained staff only. |
| Storage: | 4 °C, -20 °C |
| Storage Comment: | Maintain refrigerated at 2-8 °C for up to 6 months. For long term storage store at -20 °C in small aliquots to prevent freeze-thaw cycles. |
| Expiry Date: | 6 months |



Flow Cytometry

Image 1. CLDN12 Antibody (N-term) (ABIN652055 and ABIN2840524) flow cytometric analysis of 293 cells (right histogram) compared to a negative control cell (left histogram). FITC-conjugated goat-anti-rabbit secondary antibodies were used for the analysis.

Western Blotting

Image 2. CLDN12 Antibody (N-term) (ABIN652055 and ABIN2840524) western blot analysis in 293 cell line lysates (35 µg/lane). This demonstrates the CLDN12 antibody detected the CLDN12 protein (arrow).