

Datasheet for ABIN652058
anti-SAMSN1 antibody (AA 255-283)

3 Images

[Go to Product page](#)

Overview

Quantity:	400 µL
Target:	SAMSN1
Binding Specificity:	AA 255-283
Reactivity:	Human
Host:	Rabbit
Clonality:	Polyclonal
Conjugate:	This SAMSN1 antibody is un-conjugated
Application:	Western Blotting (WB), Flow Cytometry (FACS), Immunohistochemistry (Paraffin-embedded Sections) (IHC (p))

Product Details

Immunogen:	This SAMSN1 antibody is generated from rabbits immunized with a KLH conjugated synthetic peptide between 255-283 amino acids from the Central region of human SAMSN1.
Clone:	RB22561
Isotype:	Ig Fraction
Purification:	This antibody is purified through a protein A column, followed by peptide affinity purification.

Target Details

Target:	SAMSN1
Alternative Name:	SAMSN1 (SAMSN1 Products)

Target Details

Molecular Weight:	41708
Gene ID:	64092
NCBI Accession:	NP_001243299 , NP_071419
UniProt:	Q9NSI8

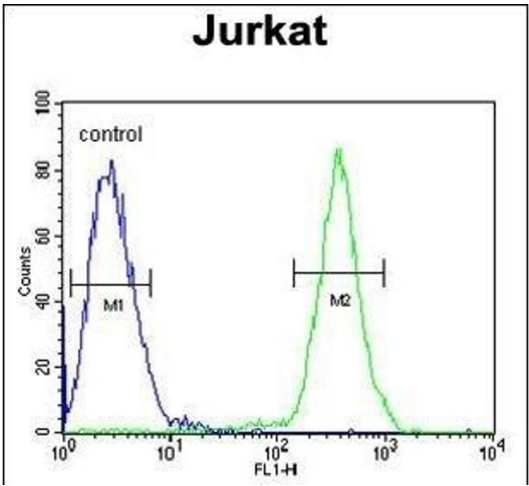
Application Details

Application Notes:	WB: 1:1000. IHC-P: 1:50~100. FC: 1:10~50
Restrictions:	For Research Use only

Handling

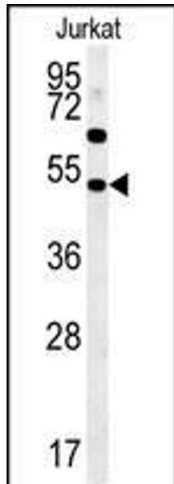
Format:	Liquid
Buffer:	Purified polyclonal antibody supplied in PBS with 0.09 % (W/V) sodium azide.
Preservative:	Sodium azide
Precaution of Use:	This product contains Sodium azide: a POISONOUS AND HAZARDOUS SUBSTANCE which should be handled by trained staff only.
Storage:	4 °C,-20 °C
Storage Comment:	Maintain refrigerated at 2-8 °C for up to 6 months. For long term storage store at -20 °C in small aliquots to prevent freeze-thaw cycles.
Expiry Date:	6 months

Images



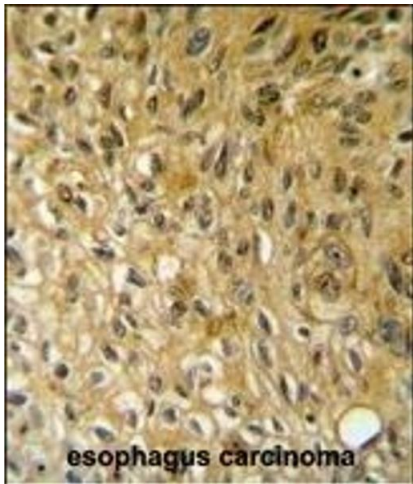
Flow Cytometry

Image 1. SSN1 Antibody (Center) (ABIN652058 and ABIN2840526) flow cytometric analysis of Jurkat cells (right histogr) compared to a negative control cell (left histogr).FITC-conjugated goat-anti-rabbit secondary antibodies were used for the analysis.



Western Blotting

Image 2. SSN1 Antibody (Center) (ABIN652058 and ABIN2840526) western blot analysis in Jurkat cell line lysates (35 µg/lane). This demonstrates the SSN1 antibody detected the SSN1 protein (arrow).



Immunohistochemistry (Paraffin-embedded Sections)

Image 3. SSN1 Antibody (Center) (ABIN652058 and ABIN2840526) immunohistochemistry analysis in formalin fixed and paraffin embedded human esophagus carcinoma followed by peroxidase conjugation of the secondary antibody and DAB staining. This data demonstrates the use of the SSN1 Antibody (Center) for immunohistochemistry. Clinical relevance has not been evaluated.