



[Go to Product page](#)

Datasheet for ABIN652064

anti-SMS antibody

3 Images

Overview

Quantity:	400 µL
Target:	SMS
Reactivity:	Human
Host:	Rabbit
Clonality:	Polyclonal
Conjugate:	This SMS antibody is un-conjugated
Application:	Western Blotting (WB), Flow Cytometry (FACS), Immunohistochemistry (Paraffin-embedded Sections) (IHC (p))

Product Details

Immunogen:	This SMS Antibody is generated from rabbits immunized with recombinant protein of human SMS.
Clone:	RB22665
Isotype:	Ig Fraction
Purification:	This antibody is purified through a protein A column, followed by peptide affinity purification.

Target Details

Target:	SMS
Alternative Name:	SMS (SMS Products)
Molecular Weight:	41268

Target Details

Gene ID:	6611
NCBI Accession:	NP_001245352 , NP_004586
UniProt:	P52788

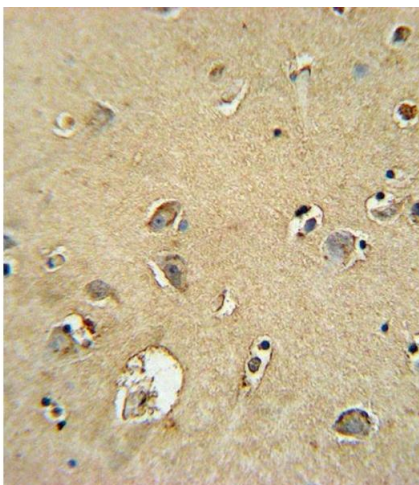
Application Details

Application Notes:	WB: 1:1000. IHC-P: 1:10~50. FC: 1:10~50
Restrictions:	For Research Use only

Handling

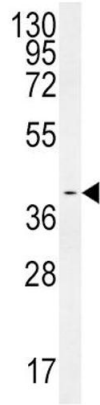
Format:	Liquid
Buffer:	Purified polyclonal antibody supplied in PBS with 0.09 % (W/V) sodium azide.
Preservative:	Sodium azide
Precaution of Use:	This product contains Sodium azide: a POISONOUS AND HAZARDOUS SUBSTANCE which should be handled by trained staff only.
Storage:	4 °C, -20 °C
Storage Comment:	Maintain refrigerated at 2-8 °C for up to 6 months. For long term storage store at -20 °C in small aliquots to prevent freeze-thaw cycles.
Expiry Date:	6 months

Images



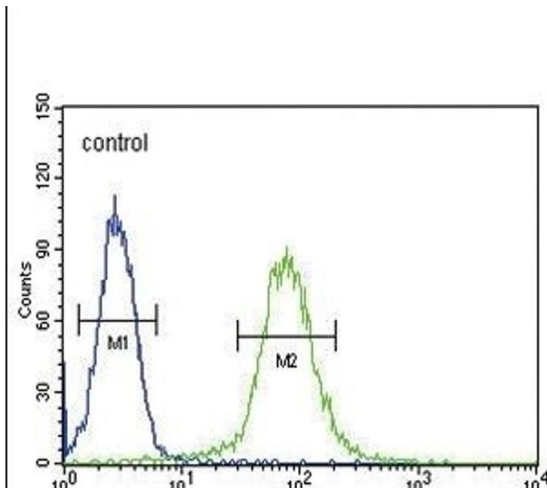
Immunohistochemistry (Paraffin-embedded Sections)

Image 1. SMS Antibody (ABIN652064 and ABIN2840532) immunohistochemistry analysis in formalin fixed and paraffin embedded human brain tissue followed by peroxidase conjugation of the secondary antibody and DAB staining. This data demonstrates the use of the SMS Antibody for immunohistochemistry. Clinical relevance has not been evaluated.



Western Blotting

Image 2. SMS Antibody (ABIN652064 and ABIN2840532) western blot analysis in Hela cell line lysates (35 μ g/lane). This demonstrates the SMS antibody detected the SMS protein (arrow).



Flow Cytometry

Image 3. SMS Antibody (ABIN652064 and ABIN2840532) flow cytometric analysis of Hela cells (right histogram) compared to a negative control cell (left histogram). FITC-conjugated goat-anti-rabbit secondary antibodies were used for the analysis.