

Datasheet for ABIN652075
anti-CUX1 antibody (AA 1347-1374)

5 Images

1 Publication

[Go to Product page](#)

Overview

Quantity:	400 µL
Target:	CUX1
Binding Specificity:	AA 1347-1374
Reactivity:	Human
Host:	Rabbit
Clonality:	Polyclonal
Conjugate:	This CUX1 antibody is un-conjugated
Application:	Western Blotting (WB), Immunofluorescence (IF), Immunohistochemistry (Paraffin-embedded Sections) (IHC (p))

Product Details

Immunogen:	This CUX1 antibody is generated from rabbits immunized with a KLH conjugated synthetic peptide between 1347-1374 amino acids of human CUX1.
Clone:	RB23382
Isotype:	IgG
Purification:	This antibody is purified through a protein A column, followed by peptide affinity purification.

Target Details

Target:	CUX1
Alternative Name:	CUX1 (CUX1 Products)

Target Details

Molecular Weight:	164187
Gene ID:	1523
NCBI Accession:	NP_001189472 , NP_001189473 , NP_001189474 , NP_852477 , NP_853530
UniProt:	P39880
Pathways:	Cellular Glucan Metabolic Process

Application Details

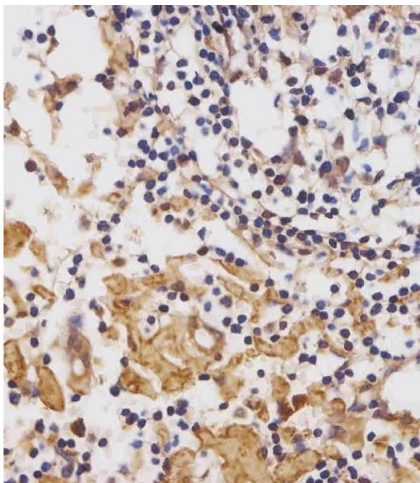
Application Notes:	IF: 1:25. WB: 1:2000. WB: 1:2000. IHC-P: 1:25. IHC-P: 1:25
Restrictions:	For Research Use only

Handling

Format:	Liquid
Buffer:	Purified polyclonal antibody supplied in PBS with 0.09 % (W/V) sodium azide.
Preservative:	Sodium azide
Precaution of Use:	This product contains Sodium azide: a POISONOUS AND HAZARDOUS SUBSTANCE which should be handled by trained staff only.
Storage:	4 °C,-20 °C
Storage Comment:	Maintain refrigerated at 2-8 °C for up to 6 months. For long term storage store at -20 °C in small aliquots to prevent freeze-thaw cycles.
Expiry Date:	6 months

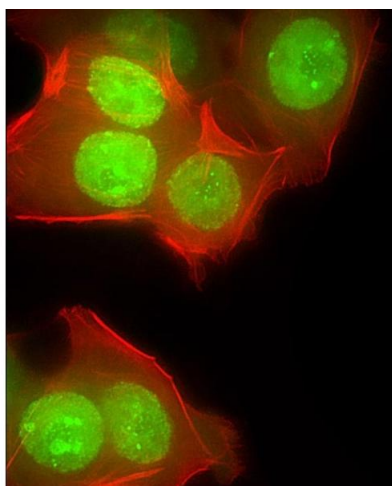
Publications

Product cited in:	Geillinger, Rathmann, Köhrle, Fiamoncini, Daniel, Kipp: "Hepatic metabolite profiles in mice with a suboptimal selenium status." in: The Journal of nutritional biochemistry , Vol. 25, Issue 9, pp. 914-22, (2014) (PubMed).
-------------------	--------------------------------------------------------------------------------------------------------------------------------------------------------------------------------------------------------------------------------------------------------



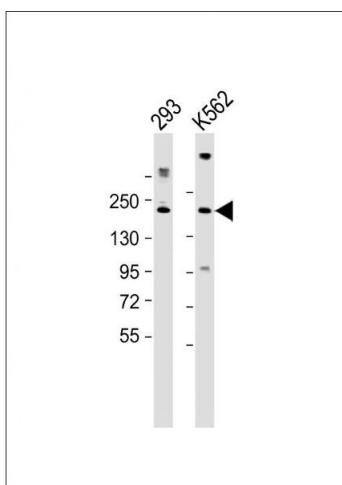
Immunohistochemistry (Paraffin-embedded Sections)

Image 1. (ABIN652075 and ABIN2840539) staining CUX1 in human lymph node tissue sections by Immunohistochemistry (IHC-P - paraformaldehyde-fixed, paraffin-embedded sections). Tissue was fixed with formaldehyde and blocked with 3 % BSA for 0.5 hour at room temperature, antigen retrieval was by heat mediation with a citrate buffer (pH 6). Samples were incubated with primary antibody (1/25) for 1 hour at 37 °C. A undiluted biotinylated goat polyvalent antibody was used as the secondary antibody.



Immunofluorescence

Image 2. Immunofluorescent analysis of 4 % paraformaldehyde-fixed, 0.1 % Triton X-100 permeabilized MCF-7 (human breast cancer cell line) cells labeling CUX1 with (ABIN652075 and ABIN2840539) at 1/25 dilution, followed by Dylight® 488-conjugated goat anti-rabbit IgG (NK179883) secondary antibody at 1/200 dilution (green). Immunofluorescence image showing nucleus and weak cytoplasm staining on MCF-7 cell line. Cytoplasmic actin is detected with Dylight® 554 Phalloidin (PD18466410) at 1/100 dilution (red).



Western Blotting

Image 3. All lanes : Anti-CUX1 Antibody (C-term) at 1:2000 dilution Lane 1: 293 whole cell lysate Lane 2: K562 whole cell lysate Lysates/proteins at 20 µg per lane. Secondary Goat Anti-Rabbit IgG, (H+L), Peroxidase conjugated at 1/10000 dilution. Predicted band size : 164 kDa Blocking/Dilution buffer: 5 % NFDM/TBST.

Please check the [product details page](#) for more images. Overall 5 images are available for ABIN652075.