

Datasheet for ABIN652088
anti-Cilp2 antibody (AA 825-852)

2 Images

[Go to Product page](#)

Overview

Quantity:	400 µL
Target:	Cilp2
Binding Specificity:	AA 825-852
Reactivity:	Human
Host:	Rabbit
Clonality:	Polyclonal
Conjugate:	This Cilp2 antibody is un-conjugated
Application:	Western Blotting (WB), Immunohistochemistry (Paraffin-embedded Sections) (IHC (p))

Product Details

Immunogen:	This CILP2 antibody is generated from rabbits immunized with a KLH conjugated synthetic peptide between 825-852 amino acids from the Central region of human CILP2.
Clone:	RB24285
Isotype:	Ig Fraction
Purification:	This antibody is purified through a protein A column, followed by peptide affinity purification.

Target Details

Target:	Cilp2
Alternative Name:	CILP2 (Cilp2 Products)
Molecular Weight:	126291

Target Details

Gene ID: 148113

NCBI Accession: [NP_694953](#)

UniProt: [Q8IUL8](#)

Application Details

Application Notes: WB: 1:1000. IHC-P: 1:50~100

Restrictions: For Research Use only

Handling

Format: Liquid

Buffer: Purified polyclonal antibody supplied in PBS with 0.09 % (W/V) sodium azide.

Preservative: Sodium azide

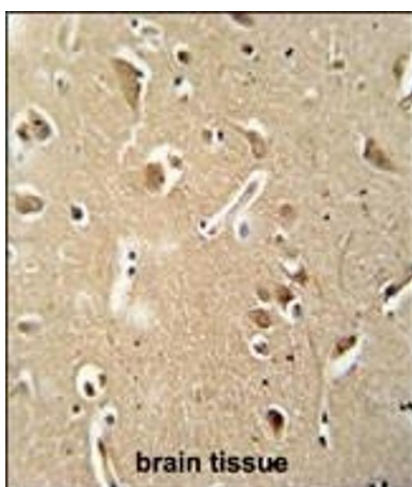
Precaution of Use: This product contains Sodium azide: a POISONOUS AND HAZARDOUS SUBSTANCE which should be handled by trained staff only.

Storage: 4 °C, -20 °C

Storage Comment: Maintain refrigerated at 2-8 °C for up to 6 months. For long term storage store at -20 °C in small aliquots to prevent freeze-thaw cycles.

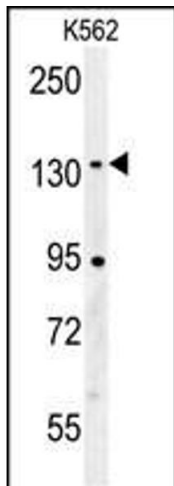
Expiry Date: 6 months

Images



Immunohistochemistry (Paraffin-embedded Sections)

Image 1. CILP2 antibody (Center) (ABIN652088 and ABIN2840543) immunohistochemistry analysis in formalin fixed and paraffin embedded human brain tissue followed by peroxidase conjugation of the secondary antibody and DAB staining. This data demonstrates the use of the CILP2 antibody (Center) for immunohistochemistry. Clinical relevance has not been evaluated.



Western Blotting

Image 2. CILP2 Antibody (Center) (ABIN652088 and ABIN2840543) western blot analysis in K562 cell line lysates (35 µg/lane). This demonstrates the CILP2 antibody detected the CILP2 protein (arrow).