



Datasheet for ABIN652119

anti-ATP13A3 antibody (N-Term)



[Go to Product page](#)

3 Images

1 Publication

Overview

Quantity:	400 µL
Target:	ATP13A3
Binding Specificity:	AA 101-129, N-Term
Reactivity:	Human
Host:	Rabbit
Clonality:	Polyclonal
Conjugate:	This ATP13A3 antibody is un-conjugated
Application:	Western Blotting (WB), Flow Cytometry (FACS), Immunohistochemistry (Paraffin-embedded Sections) (IHC (p))

Product Details

Immunogen:	This ATP13A3 antibody is generated from rabbits immunized with a KLH conjugated synthetic peptide between 101-129 amino acids from the N-terminal region of human ATP13A3.
Clone:	RB27285
Isotype:	Ig Fraction
Purification:	This antibody is purified through a protein A column, followed by peptide affinity purification.

Target Details

Target:	ATP13A3
Alternative Name:	ATP13A3 (ATP13A3 Products)

Target Details

Molecular Weight:	138043
Gene ID:	79572
NCBI Accession:	NP_078800
UniProt:	Q9H7F0
Pathways:	SARS-CoV-2 Protein Interactome , The Global Phosphorylation Landscape of SARS-CoV-2 Infection

Application Details

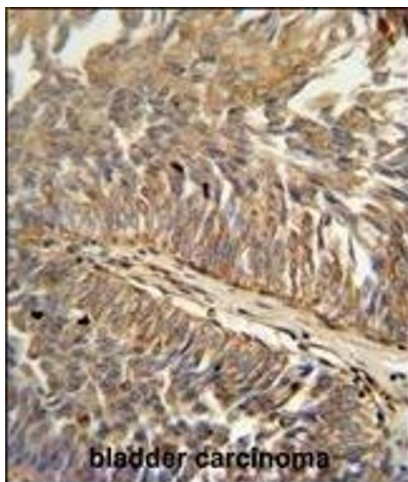
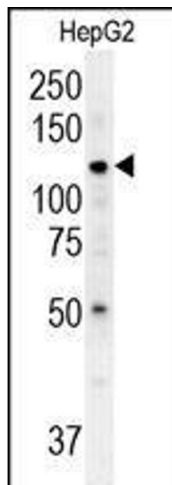
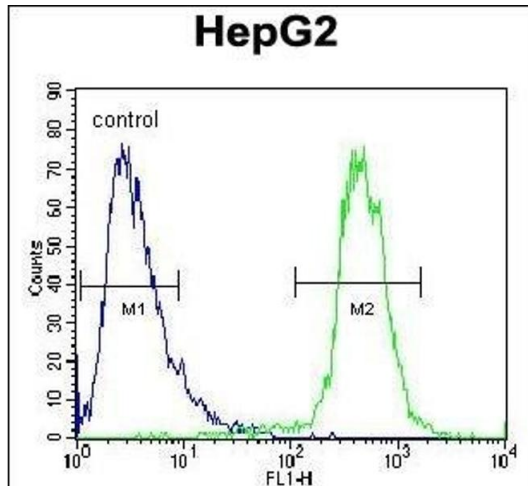
Application Notes:	WB: 1:1000. IHC-P: 1:50~100. FC: 1:10~50
Restrictions:	For Research Use only

Handling

Format:	Liquid
Buffer:	Purified polyclonal antibody supplied in PBS with 0.09 % (W/V) sodium azide.
Preservative:	Sodium azide
Precaution of Use:	This product contains Sodium azide: a POISONOUS AND HAZARDOUS SUBSTANCE which should be handled by trained staff only.
Storage:	4 °C,-20 °C
Storage Comment:	Maintain refrigerated at 2-8 °C for up to 6 months. For long term storage store at -20 °C in small aliquots to prevent freeze-thaw cycles.
Expiry Date:	6 months

Publications

Product cited in:	Zhang, Liu, Xu, Sun, Gong, Shao: "Neferine, an alkaloid ingredient in lotus seed embryo, inhibits proliferation of human osteosarcoma cells by promoting p38 MAPK-mediated p21 stabilization." in: European journal of pharmacology , Vol. 677, Issue 1-3, pp. 47-54, (2012) (PubMed).
-------------------	---



Flow Cytometry

Image 1. ATP13A3 Antibody (N-term) (ABIN652119 and ABIN2840555) flow cytometric analysis of HepG2 cells (right histogram) compared to a negative control cell (left histogram). FITC-conjugated goat-anti-rabbit secondary antibodies were used for the analysis.

Western Blotting

Image 2. ATP13A3 Antibody (N-term) (ABIN652119 and ABIN2840555) western blot analysis in HepG2 cell line lysates (35 µg/lane). This demonstrates the ATP13A3 antibody detected the ATP13A3 protein (arrow).

Immunohistochemistry (Paraffin-embedded Sections)

Image 3. ATP13A3 antibody (N-term) (ABIN652119 and ABIN2840555) immunohistochemistry analysis in formalin fixed and paraffin embedded human bladder carcinoma followed by peroxidase conjugation of the secondary antibody and DAB staining. This data demonstrates the use of the ATP13A3 antibody (N-term) for immunohistochemistry. Clinical relevance has not been evaluated.