

Datasheet for ABIN652121
anti-ESRP1 antibody (AA 182-211)

6 Images

1 Publication

[Go to Product page](#)

Overview

Quantity:	400 µL
Target:	ESRP1
Binding Specificity:	AA 182-211
Reactivity:	Human
Host:	Rabbit
Clonality:	Polyclonal
Conjugate:	This ESRP1 antibody is un-conjugated
Application:	Western Blotting (WB), Immunohistochemistry (Paraffin-embedded Sections) (IHC (p))

Product Details

Immunogen:	This ESRP1 antibody is generated from rabbits immunized with a KLH conjugated synthetic peptide between 182-211 amino acids of human ESRP1.
Clone:	RB27304
Isotype:	IgG
Predicted Reactivity:	M, Rat
Purification:	This antibody is prepared by Saturated Ammonium Sulfate (SAS) precipitation followed by dialysis against PBS.

Target Details

Target:	ESRP1
---------	-------

Target Details

Alternative Name:	ESRP1 (ESRP1 Products)
Molecular Weight:	75585
Gene ID:	54845
NCBI Accession:	NP_001030087 , NP_001116297 , NP_001116298 , NP_001116299 , NP_060167
UniProt:	Q6NXG1

Application Details

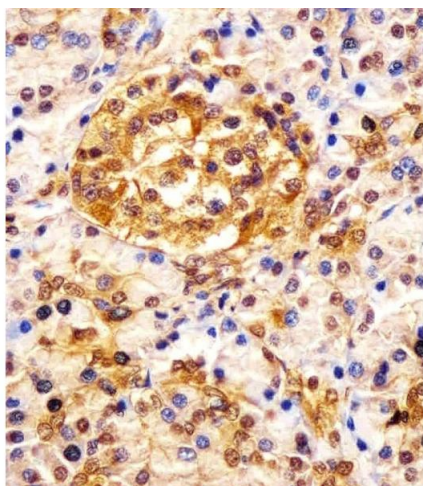
Application Notes:	WB: 1:1000. WB: 1:2000. WB: 1:1000. WB: 1:2000. IHC-P: 1:25. IHC-P: 1:50~100
Restrictions:	For Research Use only

Handling

Format:	Liquid
Buffer:	Purified polyclonal antibody supplied in PBS with 0.09 % (W/V) sodium azide.
Preservative:	Sodium azide
Precaution of Use:	This product contains Sodium azide: a POISONOUS AND HAZARDOUS SUBSTANCE which should be handled by trained staff only.
Storage:	4 °C, -20 °C
Storage Comment:	Maintain refrigerated at 2-8 °C for up to 6 months. For long term storage store at -20 °C in small aliquots to prevent freeze-thaw cycles.
Expiry Date:	6 months

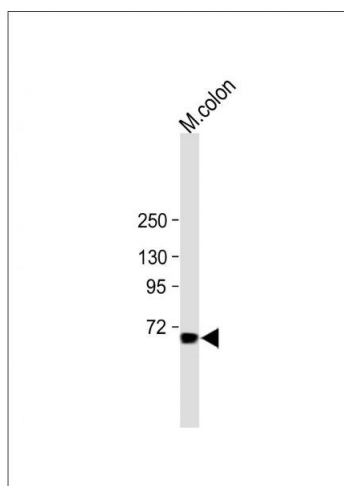
Publications

Product cited in:	Chang, Nam, Kook, Kim, Liu, Yao, Jung, Lemos, Seo, Park, Gim, Hong, Huh, Kim, Tan, Liu, Powis, Park, Liang, Kim: "HNF4? is a therapeutic target that links AMPK to WNT signalling in early-stage gastric cancer." in: Gut , (2014) (PubMed).
-------------------	-----------------------------------------------------------------------------------------------------------------------------------------------------------------------------------------------------------------------------------------------------------------------



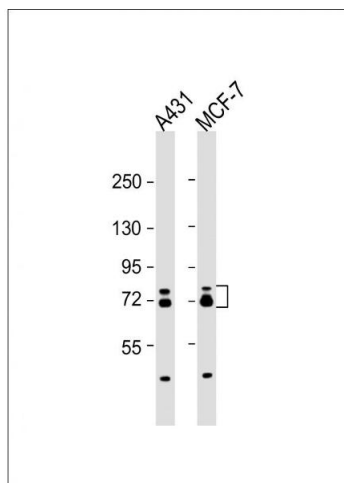
Immunohistochemistry (Paraffin-embedded Sections)

Image 1. (ABIN652121 and ABIN2840556) staining ESRP1 in human pancreas tissue sections by Immunohistochemistry (IHC-P - paraformaldehyde-fixed, paraffin-embedded sections). Tissue was fixed with formaldehyde and blocked with 3 % BSA for 0.5 hour at room temperature, antigen retrieval was by heat mediation with a citrate buffer (pH 6). Samples were incubated with primary antibody (1/25) for 1 hour at 37 °C. A undiluted biotinylated goat polyvalent antibody was used as the secondary antibody.



Western Blotting

Image 2. All lanes : Anti-ESRP1 Antibody (N-term) at 1:1000 dilution Lane 1: mouse colon tissue lysate Lysates/proteins at 20 µg per lane. Secondary Goat Anti-Rabbit IgG, (H+L), Peroxidase conjugated (AS) at 1/15000 dilution. Observed band size : 54 kDa Blocking/Dilution buffer: 5 % NFDM/TBST.



Western Blotting

Image 3. All lanes : Anti-ESRP1 Antibody (N-term) at 1:2000 dilution Lane 1: A431 whole cell lysate Lane 2: MCF-7 whole cell lysate Lysates/proteins at 20 µg per lane. Secondary Goat Anti-Rabbit IgG, (H+L), Peroxidase conjugated at 1/10000 dilution. Predicted band size : 76 kDa Blocking/Dilution buffer: 5 % NFDM/TBST.

Please check the [product details page](#) for more images. Overall 6 images are available for ABIN652121.