

Datasheet for ABIN652134
anti-KIF9 antibody (C-Term)



[Go to Product page](#)

2 Images

Overview

Quantity:	400 µL
Target:	KIF9
Binding Specificity:	AA 581-609, C-Term
Reactivity:	Human, Mouse
Host:	Rabbit
Clonality:	Polyclonal
Conjugate:	This KIF9 antibody is un-conjugated
Application:	Western Blotting (WB), Immunohistochemistry (Paraffin-embedded Sections) (IHC (p))

Product Details

Immunogen:	This KIF9 antibody is generated from rabbits immunized with a KLH conjugated synthetic peptide between 581-609 amino acids from the C-terminal region of human KIF9.
Clone:	RB27385
Isotype:	Ig Fraction
Purification:	This antibody is purified through a protein A column, followed by peptide affinity purification.

Target Details

Target:	KIF9
Alternative Name:	KIF9 (KIF9 Products)
Molecular Weight:	89986

Target Details

Gene ID:	64147
NCBI Accession:	NP_001128350 , NP_071737 , NP_878905
UniProt:	Q9HAQ2

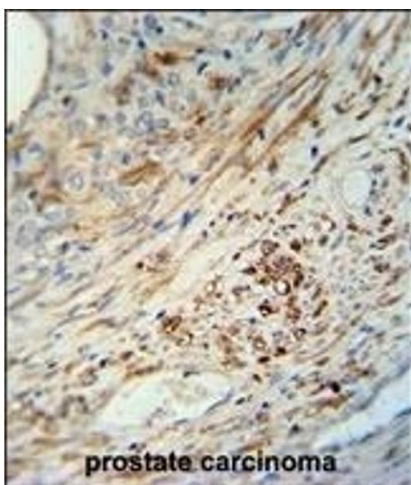
Application Details

Application Notes:	WB: 1:1000. IHC-P: 1:50~100
Restrictions:	For Research Use only

Handling

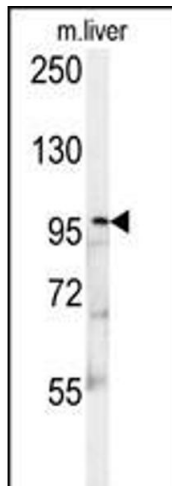
Format:	Liquid
Buffer:	Purified polyclonal antibody supplied in PBS with 0.09 % (W/V) sodium azide.
Preservative:	Sodium azide
Precaution of Use:	This product contains Sodium azide: a POISONOUS AND HAZARDOUS SUBSTANCE which should be handled by trained staff only.
Storage:	4 °C,-20 °C
Storage Comment:	Maintain refrigerated at 2-8 °C for up to 6 months. For long term storage store at -20 °C in small aliquots to prevent freeze-thaw cycles.
Expiry Date:	6 months

Images



Immunohistochemistry (Paraffin-embedded Sections)

Image 1. KIF9 antibody (C-term) (ABIN652134 and ABIN2840560) immunohistochemistry analysis in formalin fixed and paraffin embedded human prostate carcinoma followed by peroxidase conjugation of the secondary antibody and DAB staining. This data demonstrates the use of the KIF9 antibody (C-term) for immunohistochemistry. Clinical relevance has not been evaluated.



Western Blotting

Image 2. KIF9 Antibody (C-term) (ABIN652134 and ABIN2840560) western blot analysis in mouse liver tissue lysates (15 µg/lane). This demonstrates the KIF9 antibody detected KIF9 protein (arrow).