

Datasheet for ABIN652141
anti-SHISA2 antibody (C-Term)[Go to Product page](#)

2 Images

Overview

Quantity:	400 µL
Target:	SHISA2
Binding Specificity:	AA 259-288, C-Term
Reactivity:	Human, Mouse
Host:	Rabbit
Clonality:	Polyclonal
Conjugate:	This SHISA2 antibody is un-conjugated
Application:	Western Blotting (WB), Immunohistochemistry (Paraffin-embedded Sections) (IHC (p))

Product Details

Immunogen:	This SHISA2 antibody is generated from rabbits immunized with a KLH conjugated synthetic peptide between 259-288 amino acids from the C-terminal region of human SHISA2.
Clone:	RB27421
Isotype:	Ig Fraction
Purification:	This antibody is purified through a protein A column, followed by peptide affinity purification.

Target Details

Target:	SHISA2
Alternative Name:	SHISA2 (SHISA2 Products)
Molecular Weight:	31375

Target Details

Gene ID: 387914

NCBI Accession: [NP_001007539](#)

UniProt: [Q6UWI4](#)

Application Details

Application Notes: WB: 1:1000. IHC-P: 1:50~100

Restrictions: For Research Use only

Handling

Format: Liquid

Buffer: Purified polyclonal antibody supplied in PBS with 0.09 % (W/V) sodium azide.

Preservative: Sodium azide

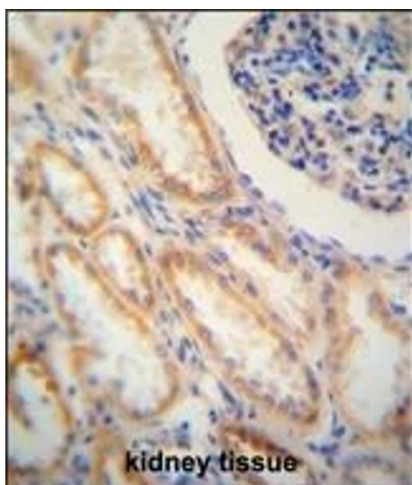
Precaution of Use: This product contains Sodium azide: a POISONOUS AND HAZARDOUS SUBSTANCE which should be handled by trained staff only.

Storage: 4 °C,-20 °C

Storage Comment: Maintain refrigerated at 2-8 °C for up to 6 months. For long term storage store at -20 °C in small aliquots to prevent freeze-thaw cycles.

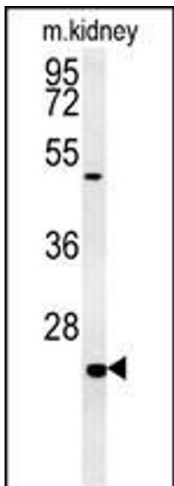
Expiry Date: 6 months

Images



Immunohistochemistry (Paraffin-embedded Sections)

Image 1. SHISA2 antibody (C-term) (ABIN652141 and ABIN2840562) immunohistochemistry analysis in formalin fixed and paraffin embedded human kidney tissue followed by peroxidase conjugation of the secondary antibody and DAB staining. This data demonstrates the use of the SHISA2 antibody (C-term) for immunohistochemistry. Clinical relevance has not been evaluated.



Western Blotting

Image 2. SHISA2 Antibody (C-term) (ABIN652141 and ABIN2840562) western blot analysis in mouse kidney tissue lysates (15 µg/lane). This demonstrates the SHISA2 antibody detected SHISA2 protein (arrow).