



[Go to Product page](#)

Datasheet for ABIN652144

anti-C1orf186 antibody (C-Term)

2 Images

Overview

Quantity:	400 µL
Target:	C1orf186
Binding Specificity:	AA 121-150, C-Term
Reactivity:	Human
Host:	Rabbit
Clonality:	Polyclonal
Conjugate:	This C1orf186 antibody is un-conjugated
Application:	Western Blotting (WB), Immunohistochemistry (Paraffin-embedded Sections) (IHC (p))

Product Details

Immunogen:	This C1orf186 antibody is generated from rabbits immunized with a KLH conjugated synthetic peptide between 121-150 amino acids from the C-terminal region of human C1orf186.
Clone:	RB27426
Isotype:	Ig Fraction
Purification:	This antibody is purified through a protein A column, followed by peptide affinity purification.

Target Details

Target:	C1orf186
Alternative Name:	C1orf186 (C1orf186 Products)
Molecular Weight:	19405

Target Details

Gene ID: 440712

NCBI Accession: [NP_001007545](#)

UniProt: [Q6ZWK4](#)

Application Details

Application Notes: WB: 1:1000. IHC-P: 1:50~100

Restrictions: For Research Use only

Handling

Format: Liquid

Buffer: Purified polyclonal antibody supplied in PBS with 0.09 % (W/V) sodium azide.

Preservative: Sodium azide

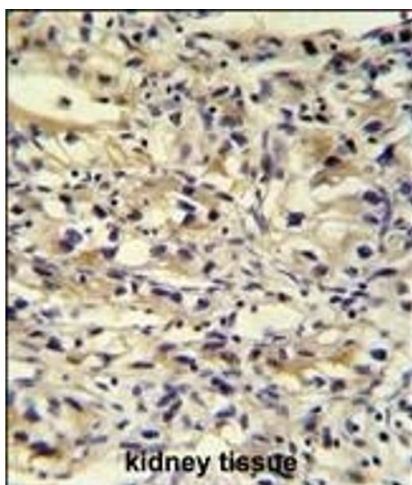
Precaution of Use: This product contains Sodium azide: a POISONOUS AND HAZARDOUS SUBSTANCE which should be handled by trained staff only.

Storage: 4 °C, -20 °C

Storage Comment: Maintain refrigerated at 2-8 °C for up to 6 months. For long term storage store at -20 °C in small aliquots to prevent freeze-thaw cycles.

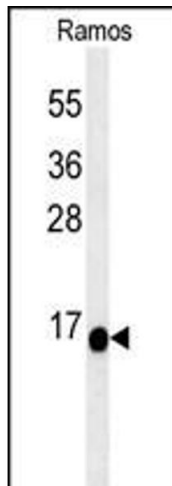
Expiry Date: 6 months

Images



Immunohistochemistry (Paraffin-embedded Sections)

Image 1. C1orf186 antibody (C-term) (ABIN652144 and ABIN2840564) immunohistochemistry analysis in formalin fixed and paraffin embedded human kidney tissue followed by peroxidase conjugation of the secondary antibody and DAB staining. This data demonstrates the use of the C1orf186 antibody (C-term) for immunohistochemistry. Clinical relevance has not been evaluated.



Western Blotting

Image 2. C1orf186 Antibody (C-term) (ABIN652144 and ABIN2840564) western blot analysis in Ramos cell line lysates (35 µg/lane). This demonstrates the C1orf186 antibody detected the C1orf186 protein (arrow).