



[Go to Product page](#)

Datasheet for ABIN652150
anti-KCTD15 antibody (C-Term)

2 Images

Overview

Quantity:	400 µL
Target:	KCTD15
Binding Specificity:	AA 255-283, C-Term
Reactivity:	Human, Mouse
Host:	Rabbit
Clonality:	Polyclonal
Conjugate:	This KCTD15 antibody is un-conjugated
Application:	Western Blotting (WB)

Product Details

Immunogen:	This KCTD15 antibody is generated from rabbits immunized with a KLH conjugated synthetic peptide between 255-283 amino acids from the C-terminal region of human KCTD15.
Clone:	RB27458
Isotype:	Ig Fraction
Predicted Reactivity:	B
Purification:	This antibody is purified through a protein A column, followed by peptide affinity purification.

Target Details

Target:	KCTD15
Alternative Name:	KCTD15 (KCTD15 Products)

Target Details

Molecular Weight:	31942
Gene ID:	79047
NCBI Accession:	NP_001123466 , NP_001123467 , NP_076981
UniProt:	Q96S11

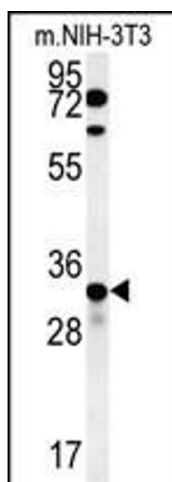
Application Details

Application Notes:	WB: 1:1000. WB: 1:1000
Restrictions:	For Research Use only

Handling

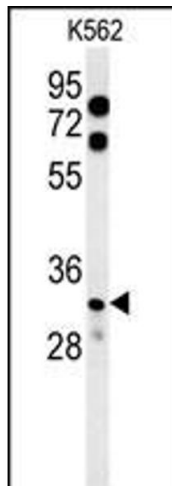
Format:	Liquid
Buffer:	Purified polyclonal antibody supplied in PBS with 0.09 % (W/V) sodium azide.
Preservative:	Sodium azide
Precaution of Use:	This product contains Sodium azide: a POISONOUS AND HAZARDOUS SUBSTANCE which should be handled by trained staff only.
Storage:	4 °C, -20 °C
Storage Comment:	Maintain refrigerated at 2-8 °C for up to 6 months. For long term storage store at -20 °C in small aliquots to prevent freeze-thaw cycles.
Expiry Date:	6 months

Images



Western Blotting

Image 1. KCTD15 Antibody (C-term) (ABIN652150 and ABIN2840568) western blot analysis in mouse NIH-3T3 cell line lysates (35 µg/lane). This demonstrates the KCTD15 antibody detected the KCTD15 protein (arrow).



Western Blotting

Image 2. KCTD15 Antibody (C-term) (ABIN652150 and ABIN2840568) western blot analysis in K562 cell line lysates (35 µg/lane). This demonstrates the KCTD15 antibody detected the KCTD15 protein (arrow).