



[Go to Product page](#)

Datasheet for ABIN652170
anti-FKBP8 antibody (AA 199-226)

2 Images

Overview

Quantity:	400 µL
Target:	FKBP8
Binding Specificity:	AA 199-226
Reactivity:	Human
Host:	Rabbit
Clonality:	Polyclonal
Conjugate:	This FKBP8 antibody is un-conjugated
Application:	Western Blotting (WB)

Product Details

Immunogen:	This FKBP8 antibody is generated from rabbits immunized with a KLH conjugated synthetic peptide between 199-226 amino acids from the Central region of human FKBP8.
Clone:	RB27518
Isotype:	Ig Fraction
Predicted Reactivity:	M, Rat
Purification:	This antibody is purified through a protein A column, followed by peptide affinity purification.

Target Details

Target:	FKBP8
Alternative Name:	FKBP8 (FKBP8 Products)

Target Details

Molecular Weight:	44562
Gene ID:	23770
NCBI Accession:	NP_036313
UniProt:	Q14318
Pathways:	Autophagy

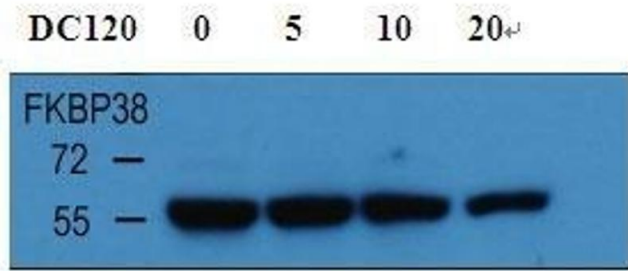
Application Details

Application Notes:	WB: 1:1000. WB: 1:1000
Restrictions:	For Research Use only

Handling

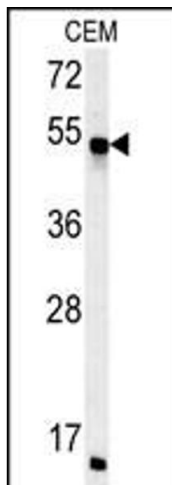
Format:	Liquid
Buffer:	Purified polyclonal antibody supplied in PBS with 0.09 % (W/V) sodium azide.
Preservative:	Sodium azide
Precaution of Use:	This product contains Sodium azide: a POISONOUS AND HAZARDOUS SUBSTANCE which should be handled by trained staff only.
Storage:	4 °C,-20 °C
Storage Comment:	Maintain refrigerated at 2-8 °C for up to 6 months. For long term storage store at -20 °C in small aliquots to prevent freeze-thaw cycles.
Expiry Date:	6 months

HepG2 CELL LINE



Western Blotting

Image 1. With HepG2 cell line lysate, the resolved proteins were electrophoretically transferred to PVDF membrane and incubated sequentially with primary antibody FKBP38 (abgent, Cat. C, 1:1000, 4 °C, overnight) and horseradish peroxidase-conjugated second antibody. After washing, the bound antibody complex was detected using an ECL chemiluminescence reagent and XAR film (Kodak).



Western Blotting

Image 2. FKBP8 Antibody (Center) (ABIN652170 and ABIN2840576) western blot analysis in CEM cell line lysates (35 µg/lane). This demonstrates the FKBP8 antibody detected the FKBP8 protein (arrow).