

Datasheet for ABIN652182  
**anti-S1PR4 antibody (N-Term)**[Go to Product page](#)

4 Images

1 Publication

## Overview

Quantity:	400 µL
Target:	S1PR4
Binding Specificity:	AA 8-37, N-Term
Reactivity:	Human, Mouse
Host:	Rabbit
Clonality:	Polyclonal
Conjugate:	This S1PR4 antibody is un-conjugated
Application:	Western Blotting (WB)

## Product Details

Immunogen:	This EDG6 antibody is generated from rabbits immunized with a KLH conjugated synthetic peptide between 8-37 amino acids from the N-terminal region of human EDG6.
Clone:	RB1829
Isotype:	Ig Fraction
Purification:	This antibody is purified through a protein A column, followed by peptide affinity purification.

## Target Details

Target:	S1PR4
Alternative Name:	EDG6 ( <a href="#">S1PR4 Products</a> )
Background:	EDG6 is a member of the G protein-coupled receptors, as well as the EDG family of proteins. It

## Target Details

	participates in endothelial differentiation, and may regulate lymphocyte cell signaling. It is a member of the lysophospholipid/lysosphingolipid receptor family.
Molecular Weight:	41623
Gene ID:	8698
NCBI Accession:	<a href="#">NP_003766</a>
UniProt:	<a href="#">O95977</a>

## Application Details

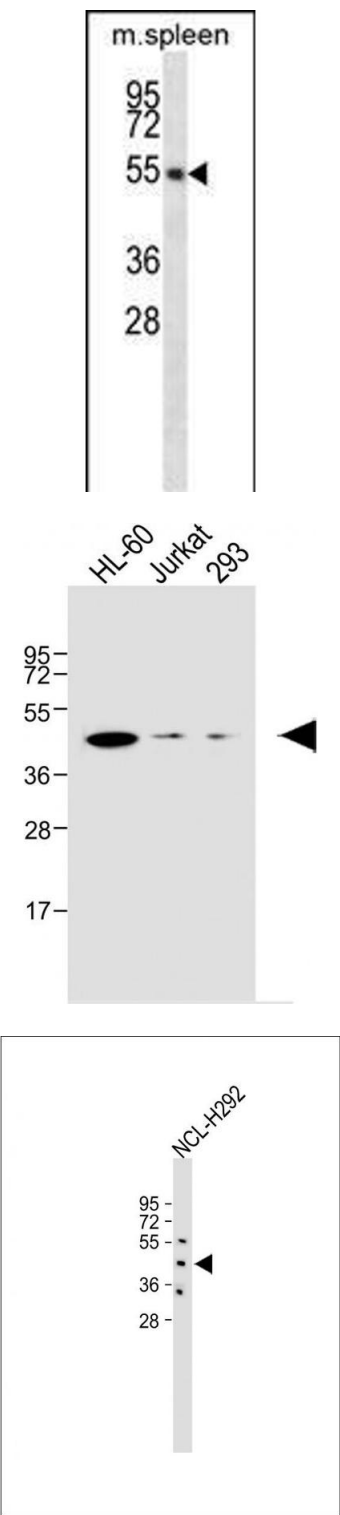
Application Notes:	WB: 1:1000. WB: 1:500. WB: 1:1000. WB: 1:1000
Restrictions:	For Research Use only

## Handling

Format:	Liquid
Buffer:	Purified polyclonal antibody supplied in PBS with 0.09 % (W/V) sodium azide.
Preservative:	Sodium azide
Precaution of Use:	This product contains Sodium azide: a POISONOUS AND HAZARDOUS SUBSTANCE which should be handled by trained staff only.
Storage:	4 °C,-20 °C
Storage Comment:	Maintain refrigerated at 2-8 °C for up to 6 months. For long term storage store at -20 °C in small aliquots to prevent freeze-thaw cycles.
Expiry Date:	6 months

## Publications

Product cited in:	Smith, Wietgreffe, Shang, Reilly, Southern, Perkey, Duan, Kohler, Müller, Robinson, Carlis, Li, Johnson, Haase: "Live simian immunodeficiency virus vaccine correlate of protection: immune complex-inhibitory Fc receptor interactions that reduce target cell availability." in: <b>Journal of immunology (Baltimore, Md. : 1950)</b> , Vol. 193, Issue 6, pp. 3126-33, (2014) ( <a href="#">PubMed</a> ).
-------------------	--



#### Western Blotting

**Image 1.** EDG6 Antibody (R23) (ABIN652182 and ABIN2840605) western blot analysis in mouse spleen tissue lysates (35 µg/lane). This demonstrates the EDG6 antibody detected the EDG6 protein (arrow).

#### Western Blotting

**Image 2.** All lanes : Anti-EDG6 Antibody at 1:1000 dilution  
Lane 1: HL-60 whole cell lysate Lane 2: Jurkat whole cell lysate Lane 3: 293 whole cell lysate Lysates/proteins at 20 µg per lane. Secondary Goat Anti-Rabbit IgG, (H+L), Peroxidase conjugated at 1/10000 dilution. Observed band size : 47 kDa Blocking/Dilution buffer: 5 % NFDm/TBST.

#### Western Blotting

**Image 3.** All lanes : Anti-EDG6 Antibody (N-term) at 1:500 dilution Lane 1: NCL- whole cell lysate Lysates/proteins at 20 µg per lane. Secondary Goat Anti-Rabbit IgG, (H+L), Peroxidase conjugated at 1/10000 dilution. Observed band size : 45 kDa Blocking/Dilution buffer: 5 % NFDm/TBST.

Please check the [product details page](#) for more images. Overall 4 images are available for ABIN652182.