

Datasheet for ABIN652186
anti-ST5 antibody (C-Term)[Go to Product page](#)

2 Images

Overview

Quantity:	400 µL
Target:	ST5
Binding Specificity:	AA 1106-1137, C-Term
Reactivity:	Human
Host:	Rabbit
Clonality:	Polyclonal
Conjugate:	This ST5 antibody is un-conjugated
Application:	Western Blotting (WB), Flow Cytometry (FACS)

Product Details

Immunogen:	This ST5 antibody is generated from rabbits immunized with a KLH conjugated synthetic peptide between 1106-1137 amino acids from the C-terminal region of human ST5.
Clone:	RB2071
Isotype:	Ig Fraction
Predicted Reactivity:	M
Purification:	This antibody is purified through a protein A column, followed by peptide affinity purification.

Target Details

Target:	ST5
Alternative Name:	ST5 (ST5 Products)

Target Details

Background: ST5 was identified by its ability to suppress the tumorigenicity of HeLa cells in nude mice. The protein contains a C-terminal region that shares similarity with the Rab 3 family of small GTP binding proteins. This protein preferentially binds to the SH3 domain of c-Abl kinase, and acts as a regulator of MAPK1/ERK2 kinase, which may contribute to its ability to reduce the tumorigenic phenotype in cells.

Molecular Weight: 126485

Gene ID: 6764

NCBI Accession: [NP_005409](#), [NP_631896](#), [NP_998783](#)

UniProt: [P78524](#)

Application Details

Application Notes: WB: 1:1000. FC: 1:10~50

Restrictions: For Research Use only

Handling

Format: Liquid

Buffer: Purified polyclonal antibody supplied in PBS with 0.09 % (W/V) sodium azide.

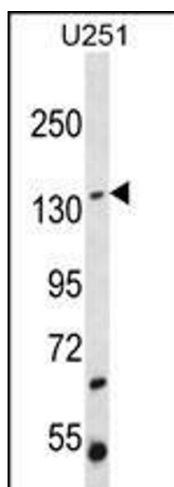
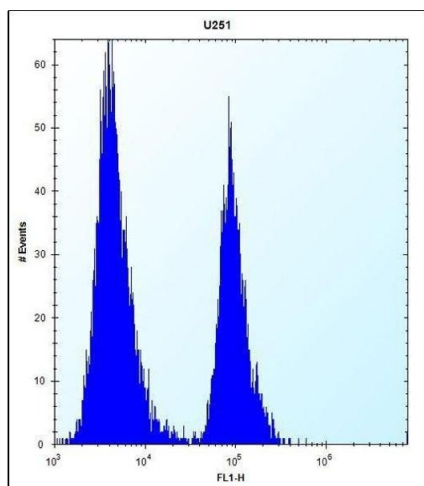
Preservative: Sodium azide

Precaution of Use: This product contains Sodium azide: a POISONOUS AND HAZARDOUS SUBSTANCE which should be handled by trained staff only.

Storage: 4 °C,-20 °C

Storage Comment: Maintain refrigerated at 2-8 °C for up to 6 months. For long term storage store at -20 °C in small aliquots to prevent freeze-thaw cycles.

Expiry Date: 6 months



Flow Cytometry

Image 1. ST5 Antibody (C-term) (ABIN652186 and ABIN2840676) flow cytometric analysis of cells (right histogram) compared to a negative control cell (left histogram). FITC-conjugated goat-anti-rabbit secondary antibodies were used for the analysis.

Western Blotting

Image 2. ST5 Antibody (C-term) (ABIN652186 and ABIN2840676) western blot analysis in cell line lysates (35 μ g/lane). This demonstrates the ST5 antibody detected the ST5 protein (arrow).