

Datasheet for ABIN652189
anti-PARP16 antibody (C-Term)[Go to Product page](#)

3 Images

Overview

Quantity:	400 µL
Target:	PARP16
Binding Specificity:	AA 215-244, C-Term
Reactivity:	Human
Host:	Rabbit
Clonality:	Polyclonal
Conjugate:	This PARP16 antibody is un-conjugated
Application:	Western Blotting (WB), Flow Cytometry (FACS), Immunohistochemistry (Paraffin-embedded Sections) (IHC (p))

Product Details

Immunogen:	This PARP16 antibody is generated from rabbits immunized with a KLH conjugated synthetic peptide between 215-244 amino acids from the C-terminal region of human PARP16.
Clone:	RB26311
Isotype:	Ig Fraction
Purification:	This antibody is purified through a protein A column, followed by peptide affinity purification.

Target Details

Target:	PARP16
Alternative Name:	PARP16 (PARP16 Products)

Target Details

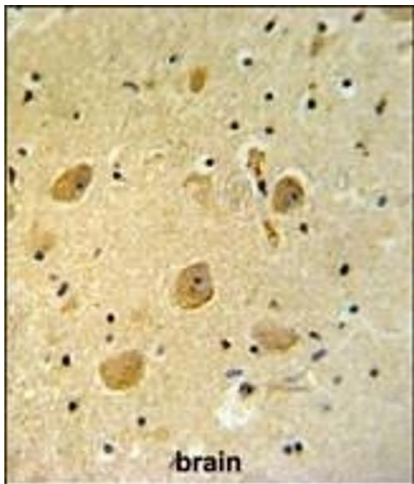
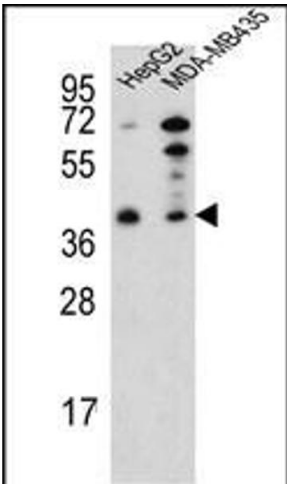
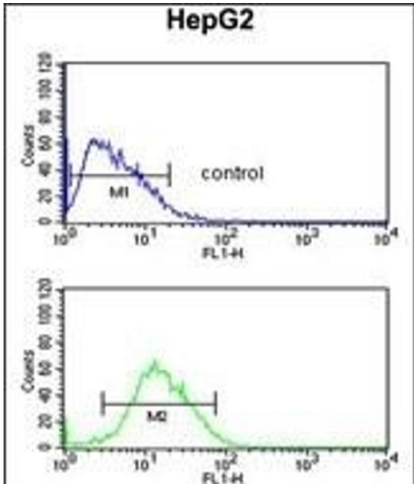
Background:	The function of this protein has not been specifically defined.
Molecular Weight:	36383
Gene ID:	54956
NCBI Accession:	NP_060321
UniProt:	Q8N5Y8

Application Details

Application Notes:	WB: 1:1000. IHC-P: 1:50~100. FC: 1:10~50
Restrictions:	For Research Use only

Handling

Format:	Liquid
Buffer:	Purified polyclonal antibody supplied in PBS with 0.09 % (W/V) sodium azide.
Preservative:	Sodium azide
Precaution of Use:	This product contains Sodium azide: a POISONOUS AND HAZARDOUS SUBSTANCE which should be handled by trained staff only.
Storage:	4 °C,-20 °C
Storage Comment:	Maintain refrigerated at 2-8 °C for up to 6 months. For long term storage store at -20 °C in small aliquots to prevent freeze-thaw cycles.
Expiry Date:	6 months



Flow Cytometry

Image 1. RP16 Antibody (C-term) (ABIN652189 and ABIN2840724) flow cytometric analysis of HepG2 cells (bottom histogram) compared to a negative control cell (top histogram). FITC-conjugated goat-anti-rabbit secondary antibodies were used for the analysis.

Western Blotting

Image 2. Western blot analysis of RP16 Antibody (C-term) (ABIN652189 and ABIN2840724) in HepG2, MDA-M cell line lysates (35 µg/lane). RP16 (arrow) was detected using the purified b.

Immunohistochemistry (Paraffin-embedded Sections)

Image 3. RP16 Antibody (C-term) (ABIN652189 and ABIN2840724) IHC analysis in formalin fixed and paraffin embedded human brain tissue followed by peroxidase conjugation of the secondary antibody and DAB staining. This data demonstrates the use of the RP16 Antibody (C-term) for immunohistochemistry. Clinical relevance has not been evaluated.