

Datasheet for ABIN652198  
**anti-Kallikrein 7 antibody (C-Term)**[Go to Product page](#)

## 3 Images

## Overview

Quantity:	400 µL
Target:	Kallikrein 7 (KLK7)
Binding Specificity:	AA 157-187, C-Term
Reactivity:	Human
Host:	Rabbit
Clonality:	Polyclonal
Conjugate:	This Kallikrein 7 antibody is un-conjugated
Application:	Western Blotting (WB), Immunohistochemistry (Paraffin-embedded Sections) (IHC (p)), Flow Cytometry (FACS)

## Product Details

Immunogen:	This Kallikrein 7 antibody is generated from rabbits immunized with a KLH conjugated synthetic peptide between 157-187 amino acids from the C-terminal region of human Kallikrein 7.
Clone:	RB6441
Isotype:	Ig Fraction
Purification:	This antibody is prepared by Saturated Ammonium Sulfate (SAS) precipitation followed by dialysis against PBS.

## Target Details

Target:	Kallikrein 7 (KLK7)
Abstract:	<a href="#">KLK7 Products</a>

## Target Details

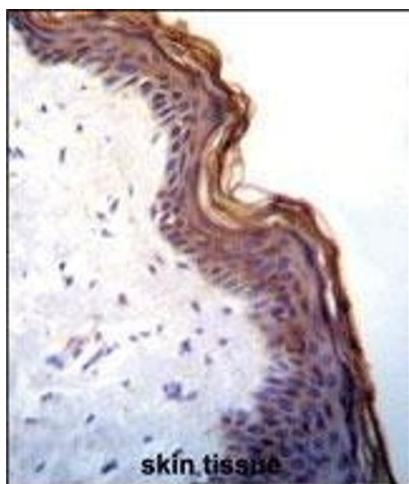
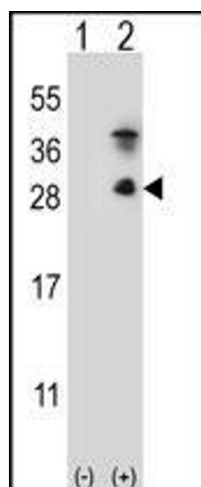
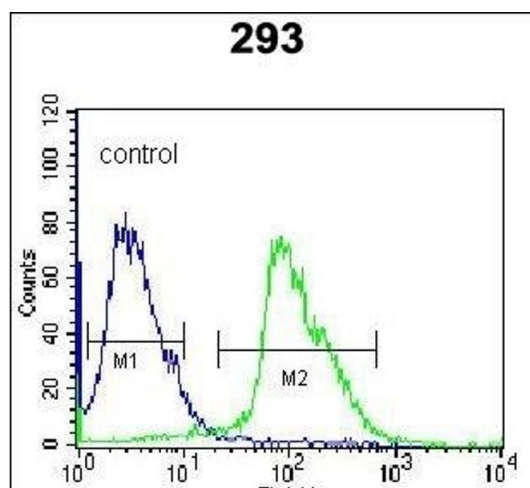
Background:	Kallikreins are a subgroup of serine proteases having diverse physiological functions. Growing evidence suggests that many kallikreins are implicated in carcinogenesis and some have potential as novel cancer and other disease biomarkers. The KLK7 enzyme is thought to be involved in the proteolysis of intercellular cohesive structures preceding desquamation, which is the shedding of the outermost layer of the epidermis.
Molecular Weight:	27525
Gene ID:	5650
NCBI Accession:	<a href="#">NP_001193982</a> , <a href="#">NP_001230055</a> , <a href="#">NP_005037</a> , <a href="#">NP_644806</a>
UniProt:	<a href="#">P49862</a>
Pathways:	<a href="#">Complement System</a>

## Application Details

Application Notes:	WB: 1:1000. IHC-P: 1:10~50. FC: 1:10~50
Restrictions:	For Research Use only

## Handling

Format:	Liquid
Buffer:	Purified polyclonal antibody supplied in PBS with 0.09 % (W/V) sodium azide.
Preservative:	Sodium azide
Precaution of Use:	This product contains Sodium azide: a POISONOUS AND HAZARDOUS SUBSTANCE which should be handled by trained staff only.
Storage:	4 °C, -20 °C
Storage Comment:	Maintain refrigerated at 2-8 °C for up to 6 months. For long term storage store at -20 °C in small aliquots to prevent freeze-thaw cycles.
Expiry Date:	6 months



### Flow Cytometry

**Image 1.** Kallikrein 7 (KLK7) Antibody (C-term) (ABIN652198 and ABIN2840744) flow cytometric analysis of 293 cells (right histogram) compared to a negative control cell (left histogram). FITC-conjugated goat-anti-rabbit secondary antibodies were used for the analysis.

### Western Blotting

**Image 2.** Western blot analysis of KLK7 (arrow) using rabbit polyclonal KLK7 Antibody (ABIN652198 and ABIN2840744). 293 cell lysates (2 µg/lane) either nontransfected (Lane 1) or transiently transfected (Lane 2) with the KLK7 gene.

### Immunohistochemistry (Paraffin-embedded Sections)

**Image 3.** Kallikrein 7 (KLK7) Antibody (C-term) (ABIN652198 and ABIN2840744) immunohistochemistry analysis in formalin fixed and paraffin embedded human skin tissue followed by peroxidase conjugation of the secondary antibody and DAB staining. This data demonstrates the use of Kallikrein 7 (KLK7) Antibody (C-term) for immunohistochemistry. Clinical relevance has not been evaluated.