

Datasheet for ABIN652199

**anti-Kallikrein 8 antibody (AA 143-172)****2** Images[Go to Product page](#)

## Overview

Quantity:	400 µL
Target:	Kallikrein 8 (KLK8)
Binding Specificity:	AA 143-172
Reactivity:	Mouse
Host:	Rabbit
Clonality:	Polyclonal
Conjugate:	This Kallikrein 8 antibody is un-conjugated
Application:	Western Blotting (WB), Immunohistochemistry (Paraffin-embedded Sections) (IHC (p))

## Product Details

Immunogen:	This Kallikrein 8 antibody is generated from rabbits immunized with a KLH conjugated synthetic peptide between 143-172 amino acids from the Central region of human Kallikrein 8.
Clone:	RB6445
Isotype:	Ig Fraction
Purification:	This antibody is purified through a protein A column, followed by peptide affinity purification.

## Target Details

Target:	Kallikrein 8 (KLK8)
Abstract:	<a href="#">KLK8 Products</a>
Background:	Kallikreins are a subgroup of serine proteases having diverse physiological functions. Growing

## Target Details

evidence suggests that many kallikreins are implicated in carcinogenesis and some have potential as novel cancer and other disease biomarkers. There are four different KLK8 isoforms, each exhibiting distinct patterns of expression that suggest roles in brain plasticity and ovarian cancer.

Molecular Weight: 28048

Gene ID: 11202

NCBI Accession: [NP\\_001268360](#), [NP\\_009127](#), [NP\\_653088](#), [NP\\_653089](#), [NP\\_653090](#)

UniProt: [O60259](#)

Pathways: [Complement System](#)

## Application Details

Application Notes: WB: 1:1000. IHC-P: 1:10~50

Restrictions: For Research Use only

## Handling

Format: Liquid

Buffer: Purified polyclonal antibody supplied in PBS with 0.09 % (W/V) sodium azide.

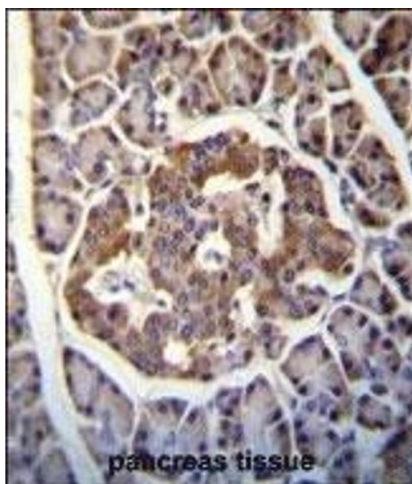
Preservative: Sodium azide

Precaution of Use: This product contains Sodium azide: a POISONOUS AND HAZARDOUS SUBSTANCE which should be handled by trained staff only.

Storage: 4 °C,-20 °C

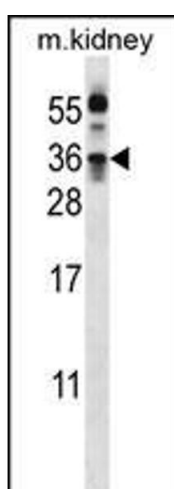
Storage Comment: Maintain refrigerated at 2-8 °C for up to 6 months. For long term storage store at -20 °C in small aliquots to prevent freeze-thaw cycles.

Expiry Date: 6 months



### Immunohistochemistry (Paraffin-embedded Sections)

**Image 1.** Kallikrein 8(KLK8) Antibody (Center) (ABIN652199 and ABIN2840745) immunohistochemistry analysis in formalin fixed and paraffin embedded human pancreas tissue followed by peroxidase conjugation of the secondary antibody and DAB staining. This data demonstrates the use of Kallikrein 8(KLK8) Antibody (Center) for immunohistochemistry. Clinical relevance has not been evaluated.



### Western Blotting

**Image 2.** KLK8 Antibody (ABIN652199 and ABIN2840745) western blot analysis in mouse kidney tissue lysates (35  $\mu$ g/lane). This demonstrates the KLK8 antibody detected the KLK8 protein (arrow).