

Datasheet for ABIN652202

anti-Glypican 3 antibody (C-Term)**3** Images[Go to Product page](#)

Overview

Quantity:	400 µL
Target:	Glypican 3 (GPC3)
Binding Specificity:	AA 529-560, C-Term
Reactivity:	Human, Mouse
Host:	Rabbit
Clonality:	Polyclonal
Conjugate:	This Glypican 3 antibody is un-conjugated
Application:	Immunofluorescence (IF), Western Blotting (WB)

Product Details

Immunogen:	This Glypican 3 (GPC3) antibody is generated from rabbits immunized with a KLH conjugated synthetic peptide between 529-560 amino acids from the C-terminal region of human Glypican 3 (GPC3).
Clone:	RB5038
Isotype:	Ig Fraction
Purification:	This antibody is prepared by Saturated Ammonium Sulfate (SAS) precipitation followed by dialysis against PBS.

Target Details

Target:	Glypican 3 (GPC3)
Abstract:	GPC3 Products

Target Details

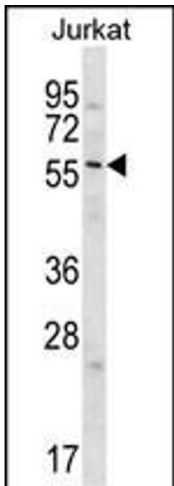
Background:	GPC3 is a cell surface proteoglycan that bears heparan sulfate. This protein may be involved in the suppression/modulation of growth in the predominantly mesodermal tissues and organs, and may play a role in the modulation of IGF2 interactions with its receptor and thereby modulate its function. Members of the glypican-related integral membrane proteoglycan family contain a core protein anchored to the cytoplasmic membrane via a glycosyl phosphatidylinositol (GPI) linkage. These proteins may play a role in the control of cell division, growth regulation, and tumor predisposition. Deletion mutations in GPC3 are the cause of Simpson-Golabi-Behmel syndrome (SGBS), also known as Simpson dysmorphia syndrome (SDYS). SGBS is a condition characterized by pre- and postnatal overgrowth (gigantism) with visceral and skeletal anomalies.
Molecular Weight:	65563
Gene ID:	2719
NCBI Accession:	NP_001158089 , NP_001158091 , NP_004475
UniProt:	P51654
Pathways:	Glycosaminoglycan Metabolic Process

Application Details

Application Notes:	IF: 1:10~50. WB: 1:1000. WB: 1:1000
Restrictions:	For Research Use only

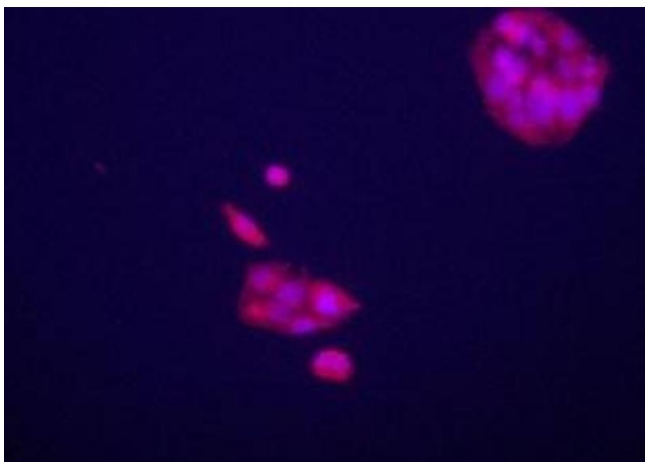
Handling

Format:	Liquid
Buffer:	Purified polyclonal antibody supplied in PBS with 0.09 % (W/V) sodium azide.
Preservative:	Sodium azide
Precaution of Use:	This product contains Sodium azide: a POISONOUS AND HAZARDOUS SUBSTANCE which should be handled by trained staff only.
Storage:	4 °C,-20 °C
Storage Comment:	Maintain refrigerated at 2-8 °C for up to 6 months. For long term storage store at -20 °C in small aliquots to prevent freeze-thaw cycles.
Expiry Date:	6 months



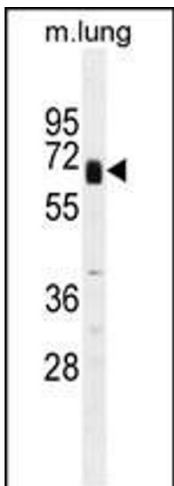
Western Blotting

Image 1. GPC3 Antibody (cat (ABIN652202 and ABIN2840751)) western blot analysis in Jurkat cell line lysates (35 µg/lane). This demonstrates the GPC3 antibody detected the GPC3 protein (arrow).



Immunofluorescence

Image 2. Immunofluorescence staining of anti-GPC3 Pab (cat (ABIN652202 and ABIN2840751)) on HepG2 cells. The cells were acetone fixated. Antibody dilution of 1:50. Original magnification 1:400. Data and protocol courtesy of Dr. Mariana Dabeva, Department of Medicine at Albert Einstein College of Medicine.



Western Blotting

Image 3. GPC3 Antibody?? (cat (ABIN652202 and ABIN2840751)) western blot analysis in mouse lung tissue lysates (35 µg/lane). This demonstrates the GPC3 antibody detected the GPC3 protein (arrow).