

Datasheet for ABIN652205

anti-Metabotropic Glutamate Receptor 3 antibody (C-Term)[Go to Product page](#)**1** Image

Overview

Quantity:	400 µL
Target:	Metabotropic Glutamate Receptor 3 (GRM3)
Binding Specificity:	AA 828-857, C-Term
Reactivity:	Human
Host:	Rabbit
Clonality:	Polyclonal
Conjugate:	This Metabotropic Glutamate Receptor 3 antibody is un-conjugated
Application:	Western Blotting (WB)

Product Details

Immunogen:	This Metabotropic Glutamate Receptor 3 antibody is generated from rabbits immunized with a KLH conjugated synthetic peptide between 828-857 amino acids from the C-terminal region of human Metabotropic Glutamate Receptor 3.
Clone:	RB4623
Isotype:	Ig Fraction
Predicted Reactivity:	Pr
Purification:	This antibody is purified through a protein A column, followed by peptide affinity purification.

Target Details

Target:	Metabotropic Glutamate Receptor 3 (GRM3)
---------	--

Target Details

Alternative Name:	Metabotropic Glutamate Receptor 3 (GPRC1C) (GRM3 Products)
Background:	<p>L-glutamate is the major excitatory neurotransmitter in the central nervous system and activates both ionotropic and metabotropic glutamate receptors. Glutamatergic neurotransmission is involved in most aspects of normal brain function and can be perturbed in many neuropathologic conditions. The metabotropic glutamate receptors are a family of G protein-coupled receptors, that have been divided into 3 groups on the basis of sequence homology, putative signal transduction mechanisms, and pharmacologic properties. Group I includes GRM1 and GRM5 and these receptors have been shown to activate phospholipase C. Group II includes GRM2 and GRM3 (also known as GPRC1C) while Group III includes GRM4, GRM6, GRM7 and GRM8. Group II and III receptors are linked to the inhibition of the cyclic AMP cascade but differ in their agonist selectivities. The activity of GRM3 is mediated by a G-protein that inhibits adenylate cyclase activity.</p>
Molecular Weight:	98879
Gene ID:	2913
NCBI Accession:	NP_000831
UniProt:	Q14832
Pathways:	cAMP Metabolic Process , Synaptic Membrane

Application Details

Application Notes:	WB: 1:1000
Restrictions:	For Research Use only

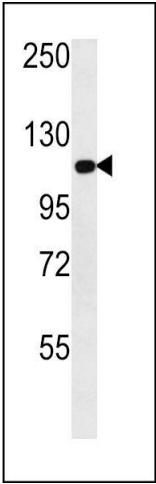
Handling

Format:	Liquid
Buffer:	Purified polyclonal antibody supplied in PBS with 0.09 % (W/V) sodium azide.
Preservative:	Sodium azide
Precaution of Use:	This product contains Sodium azide: a POISONOUS AND HAZARDOUS SUBSTANCE which should be handled by trained staff only.
Storage:	4 °C,-20 °C
Storage Comment:	Maintain refrigerated at 2-8 °C for up to 6 months. For long term storage store at -20 °C in small aliquots to prevent freeze-thaw cycles.

Handling

Expiry Date: 6 months

Images



Western Blotting

Image 1. GPRC1C Antibody (ABIN652205 and ABIN2840753) western blot analysis in NCI- cell line lysates (35 µg/lane). This demonstrates the GPRC1C antibody detected the GPRC1C protein (arrow).