



[Go to Product page](#)

Datasheet for ABIN652210  
**anti-DPP8 antibody (N-Term)**

3 Images

### Overview

Quantity:	400 µL
Target:	DPP8
Binding Specificity:	AA 23-52, N-Term
Reactivity:	Human
Host:	Rabbit
Clonality:	Polyclonal
Conjugate:	This DPP8 antibody is un-conjugated
Application:	Western Blotting (WB), Immunohistochemistry (Paraffin-embedded Sections) (IHC (p)), Flow Cytometry (FACS)

### Product Details

Immunogen:	This DPP8 antibody is generated from rabbits immunized with a KLH conjugated synthetic peptide between 23-52 amino acids from the N-terminal region of human DPP8.
Clone:	RB17830
Isotype:	Ig Fraction
Purification:	This antibody is prepared by Saturated Ammonium Sulfate (SAS) precipitation followed by dialysis against PBS.

### Target Details

Target:	DPP8
Alternative Name:	DPP8 ( <a href="#">DPP8 Products</a> )

## Target Details

---

**Background:** DPP8 is a member of the peptidase S9B family, a small family of dipeptidyl peptidases that are able to cleave peptide substrates at a prolyl bond. The protein shares similarity with dipeptidyl peptidase IV in that it is ubiquitously expressed, and hydrolyzes the same substrates. These similarities suggest that, like dipeptidyl peptidase IV, this protein may play a role in T-cell activation and immune function.

**Molecular Weight:** 103358

**Gene ID:** 54878

**NCBI Accession:** [NP\\_060213](#), [NP\\_569118](#), [NP\\_932064](#), [NP\\_932065](#)

**UniProt:** [Q6V1X1](#)

## Application Details

---

**Application Notes:** WB: 1:1000. IHC-P: 1:50~100. FC: 1:10~50

**Restrictions:** For Research Use only

## Handling

---

**Format:** Liquid

**Buffer:** Purified polyclonal antibody supplied in PBS with 0.09 % (W/V) sodium azide.

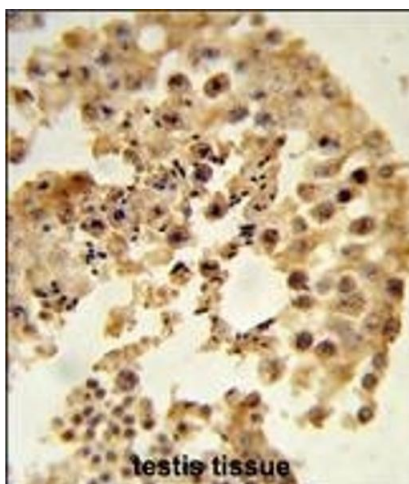
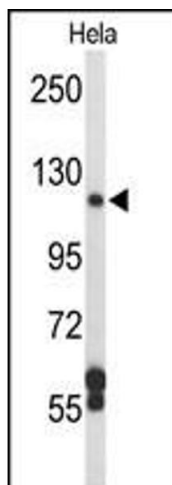
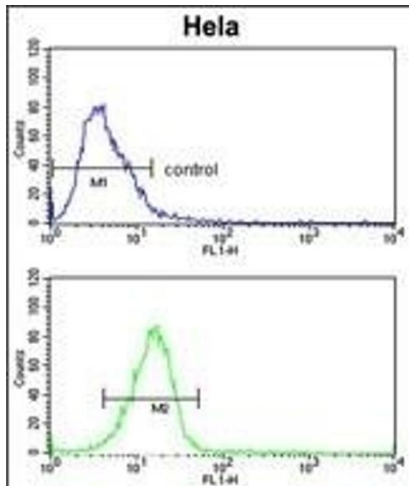
**Preservative:** Sodium azide

**Precaution of Use:** This product contains Sodium azide: a POISONOUS AND HAZARDOUS SUBSTANCE which should be handled by trained staff only.

**Storage:** 4 °C,-20 °C

**Storage Comment:** Maintain refrigerated at 2-8 °C for up to 6 months. For long term storage store at -20 °C in small aliquots to prevent freeze-thaw cycles.

**Expiry Date:** 6 months



### Flow Cytometry

**Image 1.** D Antibody (N-term) (ABIN652210 and ABIN2840792) flow cytometric analysis of HeLa cells (bottom histogram) compared to a negative control cell (top histogram). FITC-conjugated goat-anti-rabbit secondary antibodies were used for the analysis.

### Western Blotting

**Image 2.** Western blot analysis of D Antibody (N-term) (ABIN652210 and ABIN2840792) in HeLa cell line lysates (35 µg/lane). D (arrow) was detected using the purified Pab.

### Immunohistochemistry (Paraffin-embedded Sections)

**Image 3.** Formalin-fixed and paraffin-embedded human testis tissue reacted with D Antibody (N-term), which was peroxidase-conjugated to the secondary antibody, followed by DAB staining. This data demonstrates the use of this antibody for immunohistochemistry, clinical relevance has not been evaluated.