

Datasheet for ABIN652229  
**anti-LRG1 antibody (N-Term)**[Go to Product page](#)

## 4 Images

## Overview

Quantity:	400 µL
Target:	LRG1
Binding Specificity:	AA 86-114, N-Term
Reactivity:	Human
Host:	Rabbit
Clonality:	Polyclonal
Conjugate:	This LRG1 antibody is un-conjugated
Application:	Western Blotting (WB), Flow Cytometry (FACS), Immunohistochemistry (Paraffin-embedded Sections) (IHC (p))

## Product Details

Immunogen:	This LRG1 antibody is generated from rabbits immunized with a KLH conjugated synthetic peptide between 86-114 amino acids from the N-terminal region of human LRG1.
Clone:	RB18420
Isotype:	Ig Fraction
Purification:	This antibody is prepared by Saturated Ammonium Sulfate (SAS) precipitation followed by dialysis against PBS.

## Target Details

Target:	LRG1
Alternative Name:	LRG1 ( <a href="#">LRG1 Products</a> )

## Target Details

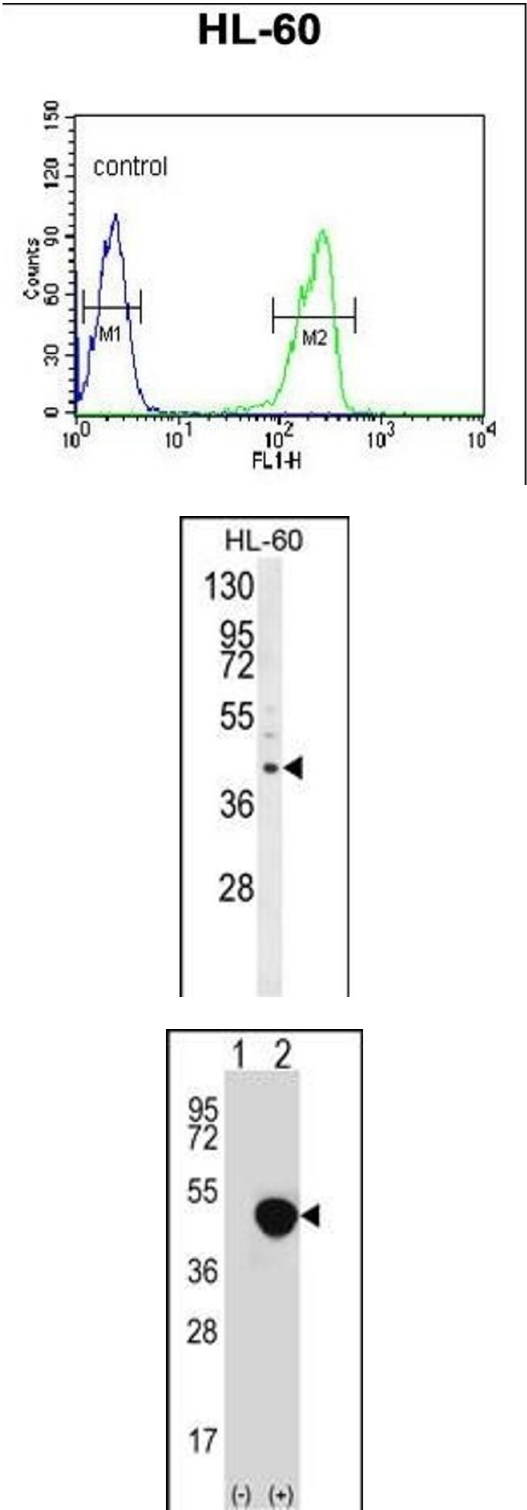
Background:	The leucine-rich repeat (LRR) family of proteins, including LRG1, have been shown to be involved in protein-protein interaction, signal transduction, and cell adhesion and development. LRG1 is expressed during granulocyte differentiation.
Gene ID:	116844
NCBI Accession:	<a href="#">NP_443204</a>
UniProt:	<a href="#">P02750</a>
Pathways:	<a href="#">Brown Fat Cell Differentiation</a>

## Application Details

Application Notes:	WB: 1:1000. WB: 1:1000. IHC-P: 1:50~100. FC: 1:10~50
Restrictions:	For Research Use only

## Handling

Format:	Liquid
Buffer:	Purified polyclonal antibody supplied in PBS with 0.09 % (W/V) sodium azide.
Preservative:	Sodium azide
Precaution of Use:	This product contains Sodium azide: a POISONOUS AND HAZARDOUS SUBSTANCE which should be handled by trained staff only.
Storage:	4 °C, -20 °C
Storage Comment:	Maintain refrigerated at 2-8 °C for up to 6 months. For long term storage store at -20 °C in small aliquots to prevent freeze-thaw cycles.
Expiry Date:	6 months



### Flow Cytometry

**Image 1.** LRG1 Antibody (N-term) (ABIN652229 and ABIN2840955) flow cytometric analysis of HL-60 cells (right histogram) compared to a negative control cell (left histogram). FITC-conjugated goat-anti-rabbit secondary antibodies were used for the analysis.

### Western Blotting

**Image 2.** Western blot analysis of LRG1 Antibody (N-term) (ABIN652229 and ABIN2840955) in HL-60 cell line lysates (35 µg/lane). LRG1 (arrow) was detected using the purified Pab.

### Western Blotting

**Image 3.** Western blot analysis of LRG1 (arrow) using rabbit polyclonal LRG1 Antibody (N-term) (ABIN652229 and ABIN2840955). 293 cell lysates (2 µg/lane) either nontransfected (Lane 1) or transiently transfected (Lane 2) with the LRG1 gene.

Please check the [product details page](#) for more images. Overall 4 images are available for ABIN652229.