

Datasheet for ABIN652233
anti-MLF1 antibody (C-Term)

5 Images

[Go to Product page](#)

Overview

Quantity:	400 µL
Target:	MLF1
Binding Specificity:	AA 215-244, C-Term
Reactivity:	Human, Mouse
Host:	Rabbit
Clonality:	Polyclonal
Conjugate:	This MLF1 antibody is un-conjugated
Application:	Western Blotting (WB), Flow Cytometry (FACS), Immunohistochemistry (Paraffin-embedded Sections) (IHC (p))

Product Details

Immunogen:	This MLF1 antibody is generated from rabbits immunized with a KLH conjugated synthetic peptide between 215-244 amino acids from the C-terminal region of human MLF1.
Clone:	RB18643
Isotype:	Ig Fraction
Purification:	This antibody is purified through a protein A column, followed by peptide affinity purification.

Target Details

Target:	MLF1
Alternative Name:	MLF1 (MLF1 Products)

Target Details

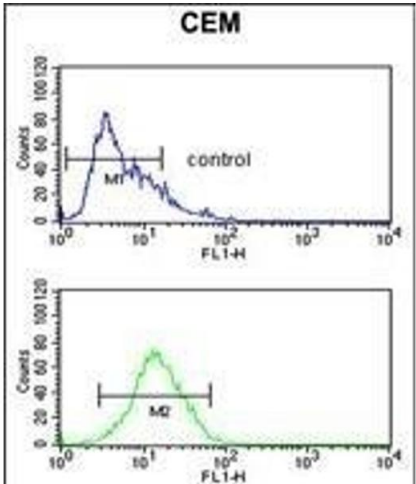
Background:	MLF1 is involved in lineage commitment of primary hemopoietic progenitors by restricting erythroid formation and enhancing myeloid formation. The protein interferes with erythropoietin-induced erythroid terminal differentiation by preventing cells from exiting the cell cycle through suppression of CDKN1B/p27Kip1 levels. It suppresses RFWD2/COP1 activity via CSN3 which activates p53 and induces cell cycle arrest. It binds DNA and affects the expression of a number of genes so may function as a transcription factor in the nucleus.
Molecular Weight:	30627
Gene ID:	4291
NCBI Accession:	NP_001123628 , NP_001123629 , NP_001182361 , NP_001182362 , NP_001182363 , NP_071888
UniProt:	P58340

Application Details

Application Notes:	WB: 1:1000. WB: 1:1000. WB: 1:1000. IHC-P: 1:10~50. FC: 1:10~50
Restrictions:	For Research Use only

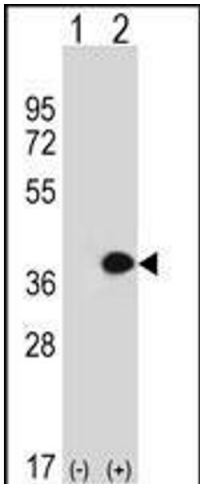
Handling

Format:	Liquid
Buffer:	Purified polyclonal antibody supplied in PBS with 0.09 % (W/V) sodium azide.
Preservative:	Sodium azide
Precaution of Use:	This product contains Sodium azide: a POISONOUS AND HAZARDOUS SUBSTANCE which should be handled by trained staff only.
Storage:	4 °C, -20 °C
Storage Comment:	Maintain refrigerated at 2-8 °C for up to 6 months. For long term storage store at -20 °C in small aliquots to prevent freeze-thaw cycles.
Expiry Date:	6 months



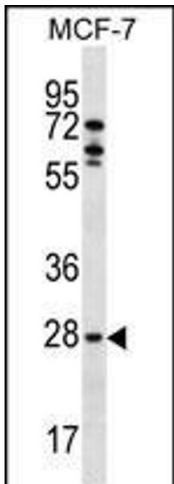
Flow Cytometry

Image 1. MLF1 Antibody (C-term) (ABIN652233 and ABIN2840968) flow cytometric analysis of CEM cells (bottom histogram) compared to a negative control cell (top histogram). FITC-conjugated goat-anti-rabbit secondary antibodies were used for the analysis.



Western Blotting

Image 2. Western blot analysis of MLF1 (arrow) using rabbit polyclonal MLF1 Antibody (C-term) (ABIN652233 and ABIN2840968). 293 cell lysates (2 µg/lane) either nontransfected (Lane 1) or transiently transfected (Lane 2) with the MLF1 gene.



Western Blotting

Image 3. MLF1 Antibody (C-term) (ABIN652233 and ABIN2840968) western blot analysis in MCF-7 cell line lysates (35 µg/lane). This demonstrates the MLF1 antibody detected the MLF1 protein (arrow).

Please check the [product details page](#) for more images. Overall 5 images are available for ABIN652233.