

Datasheet for ABIN652239
anti-SMAD7 antibody (AA 195-224)

3 Images

[Go to Product page](#)

Overview

Quantity:	400 µL
Target:	SMAD7
Binding Specificity:	AA 195-224
Reactivity:	Human
Host:	Rabbit
Clonality:	Polyclonal
Conjugate:	This SMAD7 antibody is un-conjugated
Application:	Western Blotting (WB), Immunofluorescence (IF), Immunohistochemistry (Paraffin-embedded Sections) (IHC (p))

Product Details

Immunogen:	This Smad7 antibody is generated from rabbits immunized with a KLH conjugated synthetic peptide between 195-224 amino acids from the Central region of human Smad7.
Clone:	RB18598
Isotype:	Ig Fraction
Predicted Reactivity:	Rat
Purification:	This antibody is prepared by Saturated Ammonium Sulfate (SAS) precipitation followed by dialysis against PBS.

Target Details

Target:	SMAD7
---------	-------

Target Details

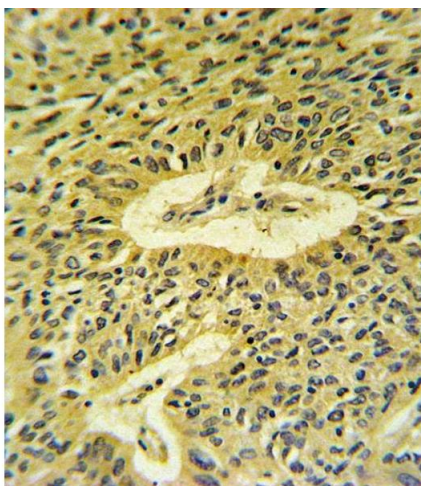
Alternative Name:	Smad7 (SMAD7 Products)
Background:	Smad7 is a member of the MAD-related family of molecules. MAD-related proteins are a recently identified family of intracellular proteins that are thought to be essential components in the signaling pathways of the serine/threonine kinase receptors of the transforming growth factor beta super family.
Molecular Weight:	46426
Gene ID:	4092
NCBI Accession:	NP_001177750 , NP_001177751 , NP_001177752 , NP_005895
UniProt:	O15105
Pathways:	Interferon-gamma Pathway , Cell-Cell Junction Organization

Application Details

Application Notes:	IF: 1:10~50. WB: 1:1000. IHC-P: 1:10~50
Restrictions:	For Research Use only

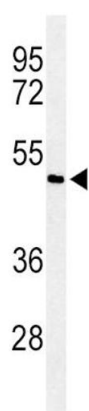
Handling

Format:	Liquid
Buffer:	Purified polyclonal antibody supplied in PBS with 0.09 % (W/V) sodium azide.
Preservative:	Sodium azide
Precaution of Use:	This product contains Sodium azide: a POISONOUS AND HAZARDOUS SUBSTANCE which should be handled by trained staff only.
Storage:	4 °C, -20 °C
Storage Comment:	Maintain refrigerated at 2-8 °C for up to 6 months. For long term storage store at -20 °C in small aliquots to prevent freeze-thaw cycles.
Expiry Date:	6 months



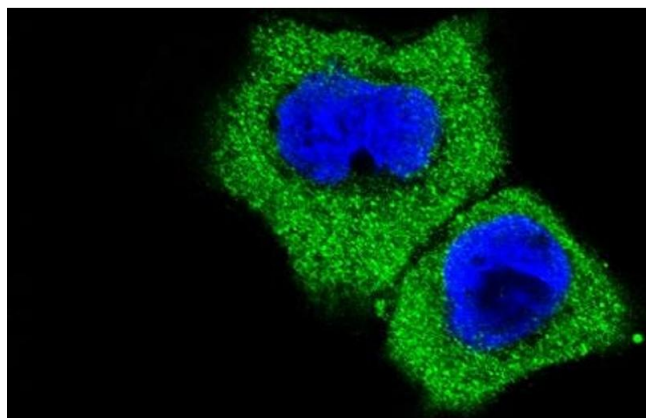
Immunohistochemistry (Paraffin-embedded Sections)

Image 1. Smad7 Antibody (Center) (ABIN652239 and ABIN2840995) IHC analysis in formalin fixed and paraffin embedded lung carcinoma followed by peroxidase conjugation of the secondary antibody and DAB staining. This data demonstrates the use of the Smad7 Antibody (Center) for immunohistochemistry. Clinical relevance has not been evaluated.



Western Blotting

Image 2. Western blot analysis of Smad7 Antibody (Center) (ABIN652239 and ABIN2840995) in ZR-75-1 cell line lysates (35 µg/lane). Smad7 (arrow) was detected using the purified Pab.



Immunofluorescence

Image 3. "Fluorescent confocal image of A431 cell stained with Smad7 Antibody (Center) (ABIN652239 and ABIN2840995). A431 cells were fixed with 4 % PFA (20 min), permeabilized with Triton X-100 (0.1 %, 10 min), then incubated with Smad7 primary antibody (1:25, 1 h at 37 °C). For secondary antibody, Alexa Fluor® 488 conjugated donkey anti-rabbit antibody (green) was used (1:400, 50 min at 37 °C). Nuclei were counterstained with DAPI (blue) (10 µg/mL, 10 min). Smad7 immunoreactivity is localized to cytoplasm significantly. "