



[Go to Product page](#)

Datasheet for ABIN652245  
**anti-FKBP11 antibody (C-Term)**

3 Images

Overview

Quantity:	400 µL
Target:	FKBP11
Binding Specificity:	AA 159-188, C-Term
Reactivity:	Human, Mouse
Host:	Rabbit
Clonality:	Polyclonal
Conjugate:	This FKBP11 antibody is un-conjugated
Application:	Western Blotting (WB), Immunohistochemistry (Paraffin-embedded Sections) (IHC (p)), Flow Cytometry (FACS)

Product Details

Immunogen:	This FKBP11 antibody is generated from rabbits immunized with a KLH conjugated synthetic peptide between 159-188 amino acids from the C-terminal region of human FKBP11.
Clone:	RB19303
Isotype:	Ig Fraction
Purification:	This antibody is prepared by Saturated Ammonium Sulfate (SAS) precipitation followed by dialysis against PBS.

Target Details

Target:	FKBP11
Alternative Name:	FKBP11 ( <a href="#">FKBP11 Products</a> )

## Target Details

---

Background:	FKBP11 belongs to the FKBP family of peptidyl-prolyl cis/trans isomerases, which catalyze the folding of proline-containing polypeptides. The peptidyl-prolyl isomerase activity of FKBP proteins is inhibited by the immunosuppressant compounds FK506 and rapamycin.
Molecular Weight:	22180
Gene ID:	51303
NCBI Accession:	<a href="#">NP_001137253</a> , <a href="#">NP_001137254</a> , <a href="#">NP_057678</a>
UniProt:	<a href="#">Q9NYL4</a>

## Application Details

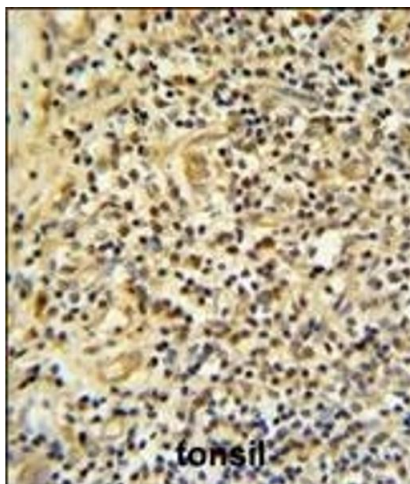
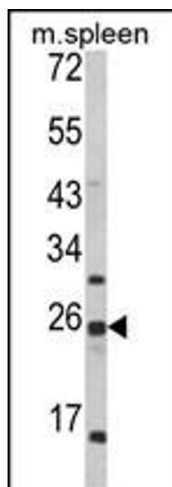
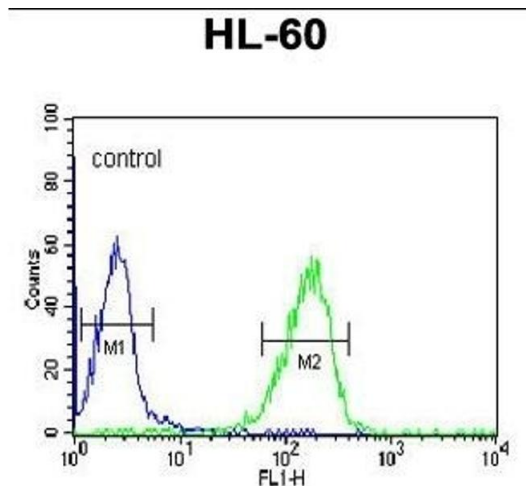
---

Application Notes:	WB: 1:1000. IHC-P: 1:50~100. FC: 1:10~50
Restrictions:	For Research Use only

## Handling

---

Format:	Liquid
Buffer:	Purified polyclonal antibody supplied in PBS with 0.09 % (W/V) sodium azide.
Preservative:	Sodium azide
Precaution of Use:	This product contains Sodium azide: a POISONOUS AND HAZARDOUS SUBSTANCE which should be handled by trained staff only.
Storage:	4 °C, -20 °C
Storage Comment:	Maintain refrigerated at 2-8 °C for up to 6 months. For long term storage store at -20 °C in small aliquots to prevent freeze-thaw cycles.
Expiry Date:	6 months



### Flow Cytometry

**Image 1.** FKBP11 Antibody (C-term) (ABIN652245 and ABIN2841019) flow cytometric analysis of HL-60 cells (right histogram) compared to a negative control cell (left histogram). FITC-conjugated goat-anti-rabbit secondary antibodies were used for the analysis.

### Western Blotting

**Image 2.** Western blot analysis of FKBP11 Antibody (C-term) (ABIN652245 and ABIN2841019) in mouse spleen tissue lysates (35 µg/lane). FKBP11 (arrow) was detected using the purified Pab.

### Immunohistochemistry (Paraffin-embedded Sections)

**Image 3.** FKBP11 Antibody (C-term) (ABIN652245 and ABIN2841019) IHC analysis in formalin fixed and paraffin embedded human tonsil tissue followed by peroxidase conjugation of the secondary antibody and DAB staining. This data demonstrates the use of the FKBP11 Antibody (C-term) for immunohistochemistry. Clinical relevance has not been evaluated.