

Datasheet for ABIN652254
anti-ECE1 antibody (AA 528-556)[Go to Product page](#)

3 Images

Overview

Quantity:	400 µL
Target:	ECE1
Binding Specificity:	AA 528-556
Reactivity:	Human
Host:	Rabbit
Clonality:	Polyclonal
Conjugate:	This ECE1 antibody is un-conjugated
Application:	Western Blotting (WB), Flow Cytometry (FACS), Immunohistochemistry (Paraffin-embedded Sections) (IHC (p))

Product Details

Immunogen:	This ECE-1 antibody is generated from rabbits immunized with a KLH conjugated synthetic peptide between 528-556 amino acids of human ECE-1.
Clone:	RB17841
Isotype:	IgG
Predicted Reactivity:	B, M, Rat
Purification:	This antibody is purified through a protein A column, followed by peptide affinity purification.

Target Details

Target:	ECE1
---------	------

Target Details

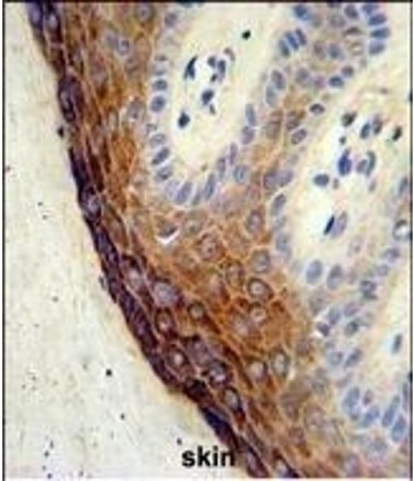
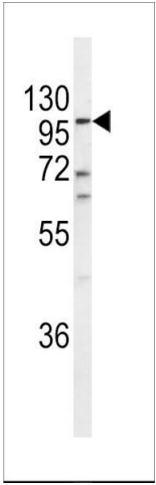
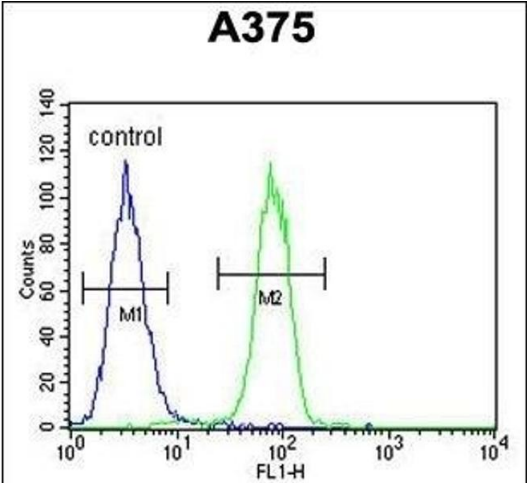
Alternative Name:	ECE-1 (ECE1 Products)
Background:	ECE-1 is involved in proteolytic processing of endothelin precursors to biologically active peptides.
Molecular Weight:	87164
Gene ID:	1889
NCBI Accession:	NP_001106818 , NP_001106819 , NP_001106820 , NP_001388
UniProt:	P42892
Pathways:	Regulation of Systemic Arterial Blood Pressure by Hormones , cAMP Metabolic Process , Regulation of G-Protein Coupled Receptor Protein Signaling

Application Details

Application Notes:	WB: 1:1000. IHC-P: 1:50~100. FC: 1:10~50
Restrictions:	For Research Use only

Handling

Format:	Liquid
Buffer:	Purified polyclonal antibody supplied in PBS with 0.09 % (W/V) sodium azide.
Preservative:	Sodium azide
Precaution of Use:	This product contains Sodium azide: a POISONOUS AND HAZARDOUS SUBSTANCE which should be handled by trained staff only.
Storage:	4 °C, -20 °C
Storage Comment:	Maintain refrigerated at 2-8 °C for up to 6 months. For long term storage store at -20 °C in small aliquots to prevent freeze-thaw cycles.
Expiry Date:	6 months



Flow Cytometry

Image 1. ECE-1 Antibody (C-term) (ABIN652254 and ABIN2841063) flow cytometric analysis of cells (right histogram) compared to a negative control cell (left histogram). FITC-conjugated goat-anti-rabbit secondary antibodies were used for the analysis.

Western Blotting

Image 2. Western blot analysis of ECE-1 Antibody (C-term) (ABIN652254 and ABIN2841063) in cell line lysates (35 μ g/lane). ECE-1 (arrow) was detected using the purified Pab.

Immunohistochemistry (Paraffin-embedded Sections)

Image 3. Formalin-fixed and paraffin-embedded human skin tissue reacted with ECE-1 Antibody (C-term), which was peroxidase-conjugated to the secondary antibody, followed by DAB staining. This data demonstrates the use of this antibody for immunohistochemistry, clinical relevance has not been evaluated.