

Datasheet for ABIN652255  
**anti-ECE1 antibody (AA 391-420)**[Go to Product page](#)

## 2 Images

## Overview

Quantity:	400 µL
Target:	ECE1
Binding Specificity:	AA 391-420
Reactivity:	Human
Host:	Rabbit
Clonality:	Polyclonal
Conjugate:	This ECE1 antibody is un-conjugated
Application:	Western Blotting (WB), Immunohistochemistry (Paraffin-embedded Sections) (IHC (p))

## Product Details

Immunogen:	This ECE1 antibody is generated from rabbits immunized with a KLH conjugated synthetic peptide between 391-420 amino acids from the Central region of human ECE1.
Clone:	RB21628
Isotype:	Ig Fraction
Predicted Reactivity:	B, M, Rat
Purification:	This antibody is purified through a protein A column, followed by peptide affinity purification.

## Target Details

Target:	ECE1
Alternative Name:	ECE1 ( <a href="#">ECE1 Products</a> )

## Target Details

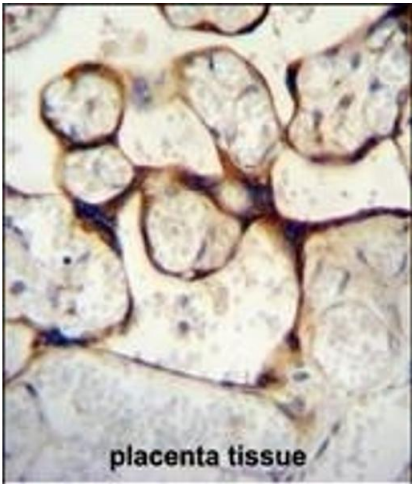
Background:	ECE-1 is involved in proteolytic processing of endothelin precursors to biologically active peptides.
Molecular Weight:	87164
Gene ID:	1889
NCBI Accession:	<a href="#">NP_001106818</a> , <a href="#">NP_001106819</a> , <a href="#">NP_001106820</a> , <a href="#">NP_001388</a>
UniProt:	<a href="#">P42892</a>
Pathways:	<a href="#">Regulation of Systemic Arterial Blood Pressure by Hormones</a> , <a href="#">cAMP Metabolic Process</a> , <a href="#">Regulation of G-Protein Coupled Receptor Protein Signaling</a>

## Application Details

Application Notes:	WB: 1:1000. IHC-P: 1:50~100
Restrictions:	For Research Use only

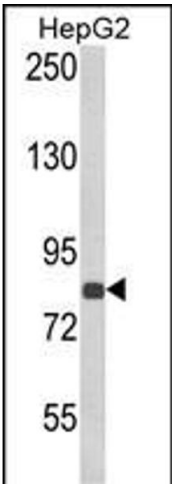
## Handling

Format:	Liquid
Buffer:	Purified polyclonal antibody supplied in PBS with 0.09 % (W/V) sodium azide.
Preservative:	Sodium azide
Precaution of Use:	This product contains Sodium azide: a POISONOUS AND HAZARDOUS SUBSTANCE which should be handled by trained staff only.
Storage:	4 °C,-20 °C
Storage Comment:	Maintain refrigerated at 2-8 °C for up to 6 months. For long term storage store at -20 °C in small aliquots to prevent freeze-thaw cycles.
Expiry Date:	6 months



**Immunohistochemistry (Paraffin-embedded Sections)**

**Image 1.** ECE1 Antibody (Center) D immunohistochemistry analysis in formalin fixed and paraffin embedded human placenta tissue followed by peroxidase conjugation of the secondary antibody and DAB staining. This data demonstrates the use of ECE1 Antibody (Center) for immunohistochemistry. Clinical relevance has not been evaluated.



**Western Blotting**

**Image 2.** Western blot analysis of ECE1 Antibody (Center) (ABIN652255 and ABIN2841065) in HepG2 cell line lysates (35 µg/lane). ECE1 (arrow) was detected using the purified Pab.