

Datasheet for ABIN652256
anti-SRSF1 antibody (N-Term)[Go to Product page](#)

3 Images

Overview

Quantity:	400 µL
Target:	SRSF1
Binding Specificity:	AA 11-38, N-Term
Reactivity:	Human
Host:	Rabbit
Clonality:	Polyclonal
Conjugate:	This SRSF1 antibody is un-conjugated
Application:	Western Blotting (WB), Immunohistochemistry (Paraffin-embedded Sections) (IHC (p))

Product Details

Immunogen:	This SFRS1 antibody is generated from rabbits immunized with a KLH conjugated synthetic peptide between 11-38 amino acids from the N-terminal region of human SFRS1.
Clone:	RB22955
Isotype:	Ig Fraction
Predicted Reactivity:	B, C, M, Pig
Purification:	This antibody is purified through a protein A column, followed by peptide affinity purification.

Target Details

Target:	SRSF1
Alternative Name:	SFRS1 (SRSF1 Products)

Target Details

Background:	SFRS1 is a member of the arginine/serine-rich splicing factor protein family, and functions in both constitutive and alternative pre-mRNA splicing. The protein binds to pre-mRNA transcripts and components of the spliceosome, and can either activate or repress splicing depending on the location of the pre-mRNA binding site. The protein's ability to activate splicing is regulated by phosphorylation and interactions with other splicing factor associated proteins.
Molecular Weight:	27745
Gene ID:	6426
NCBI Accession:	NP_001071634 , NP_008855
UniProt:	Q07955
Pathways:	Ribonucleoprotein Complex Subunit Organization

Application Details

Application Notes:	WB: 1:1000. WB: 1:1000. IHC-P: 1:50~100
Restrictions:	For Research Use only

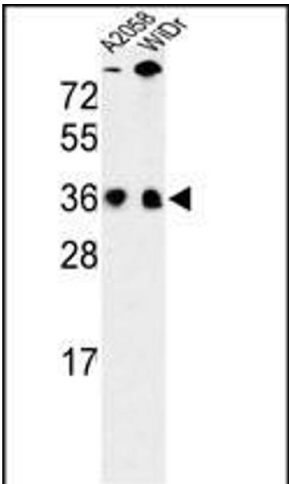
Handling

Format:	Liquid
Buffer:	Purified polyclonal antibody supplied in PBS with 0.09 % (W/V) sodium azide.
Preservative:	Sodium azide
Precaution of Use:	This product contains Sodium azide: a POISONOUS AND HAZARDOUS SUBSTANCE which should be handled by trained staff only.
Storage:	4 °C, -20 °C
Storage Comment:	Maintain refrigerated at 2-8 °C for up to 6 months. For long term storage store at -20 °C in small aliquots to prevent freeze-thaw cycles.
Expiry Date:	6 months



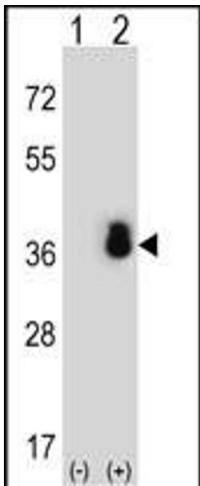
Immunohistochemistry (Paraffin-embedded Sections)

Image 1. SFRS1 Antibody (N-term) (ABIN652256 and ABIN2841067) IHC analysis in formalin fixed and paraffin embedded testis tissue followed by peroxidase conjugation of the secondary antibody and DAB staining. This data demonstrates the use of the SFRS1 Antibody (N-term) for immunohistochemistry. Clinical relevance has not been evaluated.



Western Blotting

Image 2. Western blot analysis of SFRS1 Antibody (N-term) (ABIN652256 and ABIN2841067) in , WiDr cell line lysates (35 µg/lane). SFRS1 (arrow) was detected using the purified Pab.



Western Blotting

Image 3. Western blot analysis of SFRS1 (arrow) using rabbit polyclonal SFRS1 Antibody (N-term) (ABIN652256 and ABIN2841067). 293 cell lysates (2 µg/lane) either nontransfected (Lane 1) or transiently transfected (Lane 2) with the SFRS1 gene.