

Datasheet for ABIN652257
anti-IL1A antibody (AA 177-206)

6 Images

[Go to Product page](#)

Overview

Quantity:	400 µL
Target:	IL1A
Binding Specificity:	AA 177-206
Reactivity:	Human
Host:	Rabbit
Clonality:	Polyclonal
Conjugate:	This IL1A antibody is un-conjugated
Application:	Western Blotting (WB), Flow Cytometry (FACS), Immunohistochemistry (Paraffin-embedded Sections) (IHC (p))

Product Details

Immunogen:	This IL1A antibody is generated from rabbits immunized with a KLH conjugated synthetic peptide between 177-206 amino acids from the Central region of human IL1A.
Clone:	RB21521
Isotype:	Ig Fraction
Purification:	This antibody is purified through a protein A column, followed by peptide affinity purification.

Target Details

Target:	IL1A
Alternative Name:	IL1A (IL1A Products)

Target Details

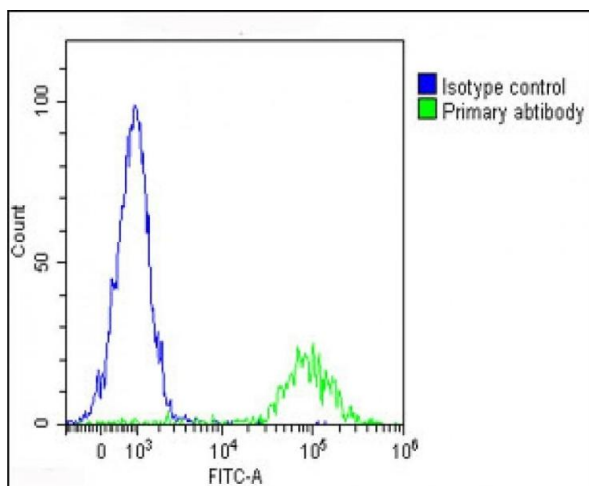
Background:	IL1A is a member of the interleukin 1 cytokine family. This cytokine is a pleiotropic cytokine involved in various immune responses, inflammatory processes, and hematopoiesis. This cytokine is produced by monocytes and macrophages as a proprotein, which is proteolytically processed and released in response to cell injury, and thus induces apoptosis.
Molecular Weight:	30607
Gene ID:	3552
NCBI Accession:	NP_000566
UniProt:	P01583
Pathways:	NF-kappaB Signaling , Autophagy , Cancer Immune Checkpoints

Application Details

Application Notes:	WB: 1:1000. WB: 1:2000. IHC-P-Leica: 1:500. FC: 1:25. FC: 1:25. FC: 1:25
Restrictions:	For Research Use only

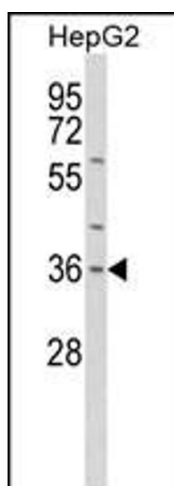
Handling

Format:	Liquid
Buffer:	Purified polyclonal antibody supplied in PBS with 0.09 % (W/V) sodium azide.
Preservative:	Sodium azide
Precaution of Use:	This product contains Sodium azide: a POISONOUS AND HAZARDOUS SUBSTANCE which should be handled by trained staff only.
Storage:	4 °C,-20 °C
Storage Comment:	Maintain refrigerated at 2-8 °C for up to 6 months. For long term storage store at -20 °C in small aliquots to prevent freeze-thaw cycles.
Expiry Date:	6 months



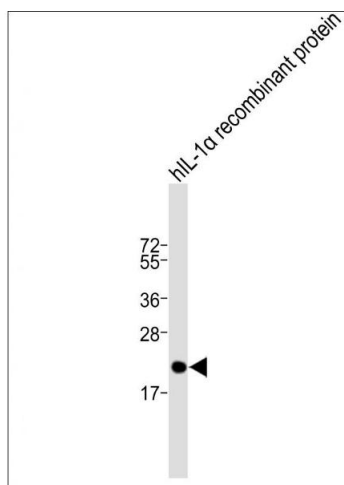
Flow Cytometry

Image 1. Overlay histogram showing Raji cells stained with (ABIN652257 and ABIN2841071)(green line). The cells were fixed with 2 % paraformaldehyde and then permeabilized with 90 % methanol for 10 min. The cells were then incubated in 2 % bovine serum albumin to block non-specific protein-protein interactions followed by the antibody (1:25 dilution) for 60 min at 37 °C. The secondary antibody used was Goat-Anti-Rabbit IgG, DyLight® 488 Conjugated Highly Cross-Adsorbed at 1/200 dilution for 40 min at Room temperature. Isotype control antibody (blue line) was rabbit IgG1 (1 μ g/ 1×10^6 cells) used under the same conditions. Acquisition of >10,000 events was performed.



Western Blotting

Image 2. Western blot analysis of IL1A Antibody (Center) (ABIN652257 and ABIN2841071) in HepG2 cell line lysates (35 μ g/lane). IL1A (arrow) was detected using the purified Pab.



Western Blotting

Image 3. Anti-IL1A Antibody (Center) at 1:2000 dilution + hIL-1 α recombinant protein Lysates/proteins at 20 ng per lane. Secondary Goat Anti-Rabbit IgG, (H+L), Peroxidase conjugated at 1/10000 dilution. Predicted band size : 31 kDa Blocking/Dilution buffer: 5 % NFDm/TBST.

Please check the [product details page](#) for more images. Overall 6 images are available for ABIN652257.