

Datasheet for ABIN652263

anti-Hexosaminidase A antibody (AA 315-343)[Go to Product page](#)**3** Images

Overview

Quantity:	400 µL
Target:	Hexosaminidase A (HEXA)
Binding Specificity:	AA 315-343
Reactivity:	Human
Host:	Rabbit
Clonality:	Polyclonal
Conjugate:	This Hexosaminidase A antibody is un-conjugated
Application:	Western Blotting (WB), Immunohistochemistry (Paraffin-embedded Sections) (IHC (p)), Flow Cytometry (FACS)

Product Details

Immunogen:	This HEXA antibody is generated from rabbits immunized with a KLH conjugated synthetic peptide between 315-343 amino acids from the Central region of human HEXA.
Clone:	RB20993
Isotype:	Ig Fraction
Purification:	This antibody is purified through a protein A column, followed by peptide affinity purification.

Target Details

Target:	Hexosaminidase A (HEXA)
Alternative Name:	HEXA (HEXA Products)

Target Details

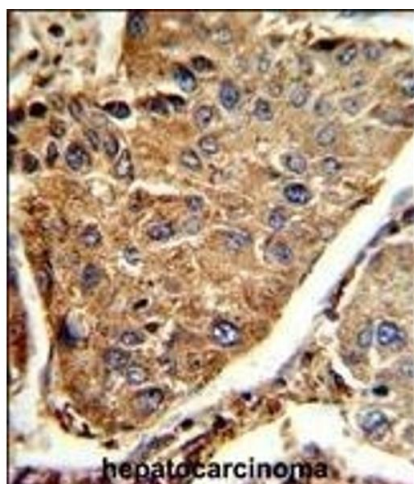
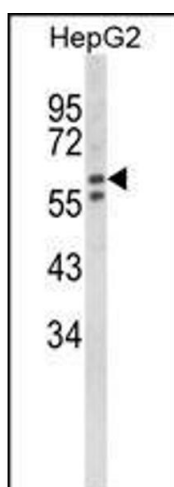
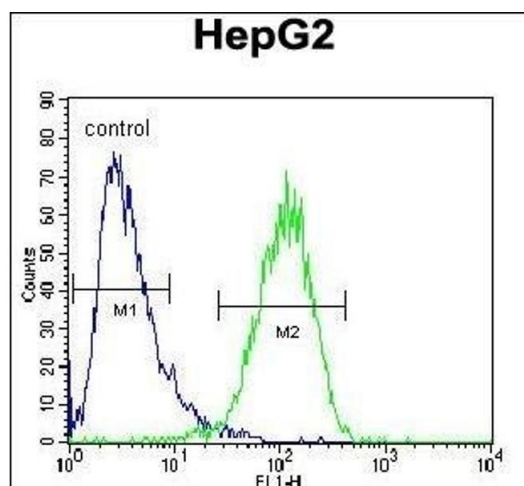
Background:	HEXA is the alpha subunit of the lysosomal enzyme beta-hexosaminidase that, together with the cofactor GM2 activator protein, catalyzes the degradation of the ganglioside GM2, and other molecules containing terminal N-acetyl hexosamines. Beta-hexosaminidase is composed of two subunits, alpha and beta, which are encoded by separate genes. Both beta-hexosaminidase alpha and beta subunits are members of family 20 of glycosyl hydrolases.
Molecular Weight:	60703
Gene ID:	3073
NCBI Accession:	NP_000511
UniProt:	P06865
Pathways:	Sensory Perception of Sound , Glycosaminoglycan Metabolic Process

Application Details

Application Notes:	WB: 1:1000. IHC-P: 1:50~100. FC: 1:10~50
Restrictions:	For Research Use only

Handling

Format:	Liquid
Buffer:	Purified polyclonal antibody supplied in PBS with 0.09 % (W/V) sodium azide.
Preservative:	Sodium azide
Precaution of Use:	This product contains Sodium azide: a POISONOUS AND HAZARDOUS SUBSTANCE which should be handled by trained staff only.
Storage:	4 °C, -20 °C
Storage Comment:	Maintain refrigerated at 2-8 °C for up to 6 months. For long term storage store at -20 °C in small aliquots to prevent freeze-thaw cycles.
Expiry Date:	6 months



Flow Cytometry

Image 1. HEXA Antibody (Center) (ABIN652263 and ABIN2841133) flow cytometric analysis of HepG2 cells (right histogram) compared to a negative control cell (left histogram). FITC-conjugated goat-anti-rabbit secondary antibodies were used for the analysis.

Western Blotting

Image 2. Western blot analysis of HEXA Antibody (Center) (ABIN652263 and ABIN2841133) in HepG2 cell line lysates (35 µg/lane). HEXA (arrow) was detected using the purified Pab.

Immunohistochemistry (Paraffin-embedded Sections)

Image 3. Formalin-fixed and paraffin-embedded human hepatocarcinoma reacted with HEXA Antibody (Center), which was peroxidase-conjugated to the secondary antibody, followed by DAB staining. This data demonstrates the use of this antibody for immunohistochemistry, clinical relevance has not been evaluated.