

Datasheet for ABIN652272  
**anti-L-Selectin antibody (C-Term)**

## 3 Images

[Go to Product page](#)

## Overview

Quantity:	200 µL
Target:	L-Selectin (SELL)
Binding Specificity:	AA 346-372, C-Term
Reactivity:	Human
Host:	Rabbit
Clonality:	Polyclonal
Conjugate:	This L-Selectin antibody is un-conjugated
Application:	Flow Cytometry (FACS), Western Blotting (WB), Immunohistochemistry (Paraffin-embedded Sections) (IHC (p))

## Product Details

Immunogen:	This SELL antibody is generated from rabbits immunized with a KLH conjugated synthetic peptide between 346-372 amino acids from the C-terminal region of human SELL.
Clone:	RB21892
Isotype:	Ig Fraction
Purification:	This antibody is purified through a protein A column, followed by peptide affinity purification.

## Target Details

Target:	L-Selectin (SELL)
Alternative Name:	SELL ( <a href="#">SELL Products</a> )

## Target Details

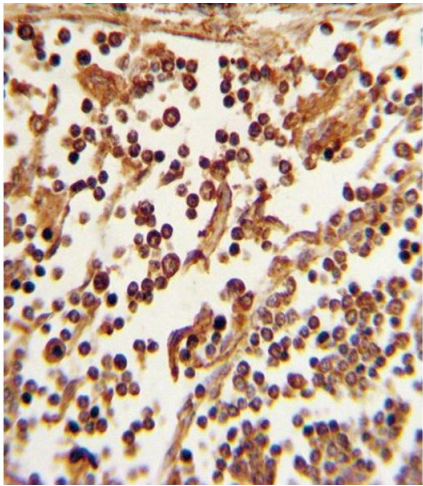
Background:	SELL is a cell surface component that is a member of a family of adhesion/homing receptors which play important roles in leukocyte-endothelial cell interactions. The molecule is composed of multiple domains: one homologous to lectins, one to epidermal growth factor, and two to the consensus repeat units found in C3/C4 binding proteins.
Molecular Weight:	42187
Gene ID:	6402
NCBI Accession:	<a href="#">NP_000646</a>
UniProt:	<a href="#">P14151</a>

## Application Details

Application Notes:	WB: 1:2000. IHC-P: 1:10~50. FC: 1:25
Restrictions:	For Research Use only

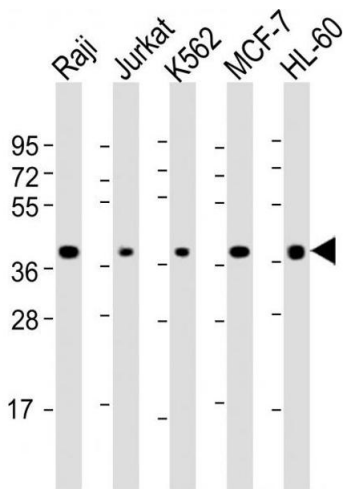
## Handling

Format:	Liquid
Buffer:	Purified polyclonal antibody supplied in PBS with 0.09 % (W/V) sodium azide.
Preservative:	Sodium azide
Precaution of Use:	This product contains Sodium azide: a POISONOUS AND HAZARDOUS SUBSTANCE which should be handled by trained staff only.
Storage:	4 °C,-20 °C
Storage Comment:	Maintain refrigerated at 2-8 °C for up to 6 months. For long term storage store at -20 °C in small aliquots to prevent freeze-thaw cycles.
Expiry Date:	6 months



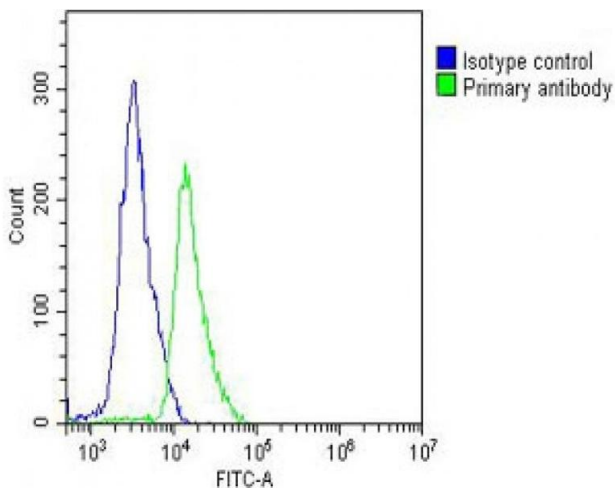
Immunohistochemistry (Paraffin-embedded Sections)

**Image 1.** Formalin-fixed and paraffin-embedded human lymph tissue with SELL Antibody (C-term), which was peroxidase-conjugated to the secondary antibody, followed by DAB staining. This data demonstrates the use of this antibody for immunohistochemistry, clinical relevance has not been evaluated.



Western Blotting

**Image 2.** All lanes : Anti-SELL Antibody (C-term) at 1:2000 dilution Lane 1: Raji whole cell lysate Lane 2: Jurkat whole cell lysate Lane 3: K562 whole cell lysate Lane 4: MCF-7 whole cell lysate Lane 5: HL-60 whole cell lysate Lysates/proteins at 20 µg per lane. Secondary Goat Anti-Rabbit IgG, (H+L), Peroxidase conjugated at 1/10000 dilution. Predicted band size : 42 kDa Blocking/Dilution buffer: 5 % NFDM/TBST.



Flow Cytometry

**Image 3.** Overlay histogram showing Jurkat cells stained with (ABIN652272 and ABIN2841155) (green line). The cells were fixed with 2 % paraformaldehyde (10 min). The cells were then incubated in 2 % bovine serum albumin to block non-specific protein-protein interactions followed by the antibody ((ABIN652272 and ABIN2841155), 1:25 dilution) for 60 min at 37 °C. The secondary antibody used was Goat-Anti-Rabbit IgG, DyLight® 488 Conjugated Highly Cross-Adsorbed(OH191631) at 1/200 dilution for 40 min at 37 °C. Isotype control antibody (blue line) was rabbit IgG (1 µg/1x10<sup>6</sup> cells) used under the same conditions. Acquisition of >10,000 events was performed.