

Datasheet for ABIN652273  
**anti-SFRP5 antibody (AA 219-248)**[Go to Product page](#)

## 3 Images

## Overview

Quantity:	400 µL
Target:	SFRP5
Binding Specificity:	AA 219-248
Reactivity:	Human
Host:	Rabbit
Clonality:	Polyclonal
Conjugate:	This SFRP5 antibody is un-conjugated
Application:	Western Blotting (WB), Immunohistochemistry (Paraffin-embedded Sections) (IHC (p)), Flow Cytometry (FACS)

## Product Details

Immunogen:	This SFRP5 antibody is generated from rabbits immunized with a KLH conjugated synthetic peptide between 219-248 amino acids from the Central region of human SFRP5.
Clone:	RB21900
Isotype:	Ig Fraction
Predicted Reactivity:	B
Purification:	This antibody is purified through a protein A column, followed by peptide affinity purification.

## Target Details

Target:	SFRP5
---------	-------

## Target Details

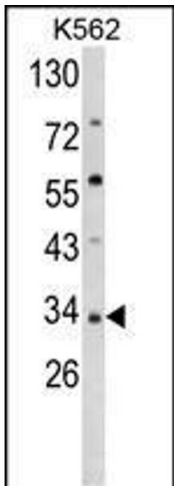
Alternative Name:	SFRP5 ( <a href="#">SFRP5 Products</a> )
Background:	Secreted frizzled-related protein 5 (SFRP5) is a member of the SFRP family that contains a cysteine-rich domain homologous to the putative Wnt-binding site of Frizzled proteins. SFRPs act as soluble modulators of Wnt signaling. SFRP5 and SFRP1 may be involved in determining the polarity of photoreceptor cells in the retina.
Molecular Weight:	35563
Gene ID:	6425
NCBI Accession:	<a href="#">NP_003006</a>
UniProt:	<a href="#">Q5T4F7</a>
Pathways:	<a href="#">WNT Signaling</a>

## Application Details

Application Notes:	WB: 1:1000. IHC-P: 1:50~100. FC: 1:10~50
Restrictions:	For Research Use only

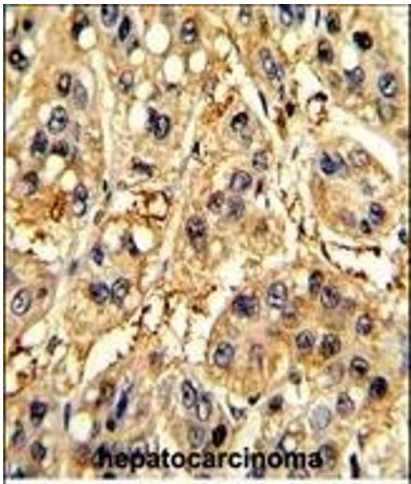
## Handling

Format:	Liquid
Buffer:	Purified polyclonal antibody supplied in PBS with 0.09 % (W/V) sodium azide.
Preservative:	Sodium azide
Precaution of Use:	This product contains Sodium azide: a POISONOUS AND HAZARDOUS SUBSTANCE which should be handled by trained staff only.
Storage:	4 °C, -20 °C
Storage Comment:	Maintain refrigerated at 2-8 °C for up to 6 months. For long term storage store at -20 °C in small aliquots to prevent freeze-thaw cycles.
Expiry Date:	6 months



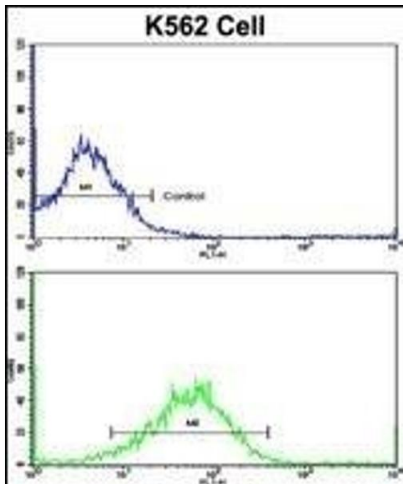
### Western Blotting

**Image 1.** Western blot analysis of SFRP5 Antibody (Center) (ABIN652273 and ABIN2841156) in K562 cell line lysates (35 µg/lane). SFRP5 (arrow) was detected using the purified Pab.



### Immunohistochemistry (Paraffin-embedded Sections)

**Image 2.** Formalin-fixed and paraffin-embedded human hepatocarcinoma with SFRP5 Antibody (Center), which was peroxidase-conjugated to the secondary antibody, followed by DAB staining. This data demonstrates the use of this antibody for immunohistochemistry, clinical relevance has not been evaluated.



### Flow Cytometry

**Image 3.** Flow cytometric analysis of K562 cells using SFRP5 Antibody (Center) (bottom histogram) compared to a negative control cell (top histogram). FITC-conjugated goat-anti-rabbit secondary antibodies were used for the analysis.