

Datasheet for ABIN652275  
**anti-NAT2 antibody (C-Term)**[Go to Product page](#)

## 4 Images

## Overview

Quantity:	400 µL
Target:	NAT2
Binding Specificity:	AA 226-254, C-Term
Reactivity:	Human, Mouse
Host:	Rabbit
Clonality:	Polyclonal
Conjugate:	This NAT2 antibody is un-conjugated
Application:	Western Blotting (WB), Flow Cytometry (FACS), Immunohistochemistry (Paraffin-embedded Sections) (IHC (p))

## Product Details

Immunogen:	This NAT2 antibody is generated from rabbits immunized with a KLH conjugated synthetic peptide between 226-254 amino acids from the C-terminal region of human NAT2.
Clone:	RB21918
Isotype:	Ig Fraction
Purification:	This antibody is purified through a protein A column, followed by peptide affinity purification.

## Target Details

Target:	NAT2
Alternative Name:	NAT2 ( <a href="#">NAT2 Products</a> )

## Target Details

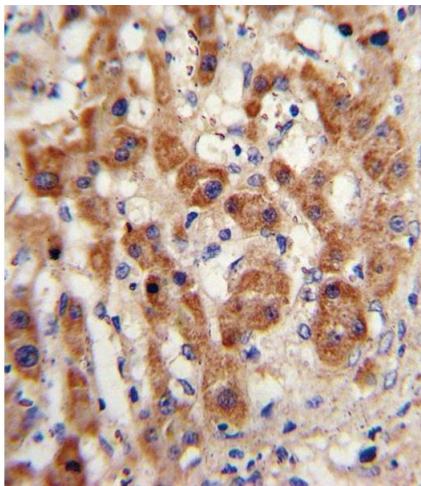
Background:	NAT2 is an enzyme that functions to both activate and deactivate arylamine and hydrazine drugs and carcinogens.
Molecular Weight:	33542
Gene ID:	10
NCBI Accession:	<a href="#">NP_000006</a>
UniProt:	<a href="#">P11245</a>

## Application Details

Application Notes:	WB: 1:1000. WB: 1:1000. IHC-P: 1:10~50. FC: 1:10~50
Restrictions:	For Research Use only

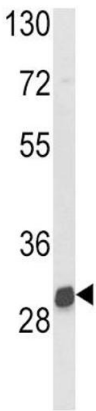
## Handling

Format:	Liquid
Buffer:	Purified polyclonal antibody supplied in PBS with 0.09 % (W/V) sodium azide.
Preservative:	Sodium azide
Precaution of Use:	This product contains Sodium azide: a POISONOUS AND HAZARDOUS SUBSTANCE which should be handled by trained staff only.
Storage:	4 °C,-20 °C
Storage Comment:	Maintain refrigerated at 2-8 °C for up to 6 months. For long term storage store at -20 °C in small aliquots to prevent freeze-thaw cycles.
Expiry Date:	6 months



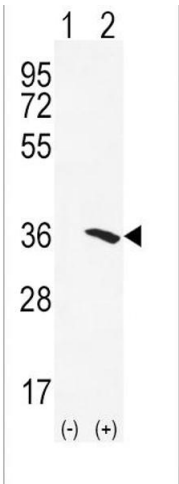
#### Immunohistochemistry (Paraffin-embedded Sections)

**Image 1.** Formalin-fixed and paraffin-embedded human hepatocarcinoma with NAT2 Antibody (C-term), which was peroxidase-conjugated to the secondary antibody, followed by DAB staining. This data demonstrates the use of this antibody for immunohistochemistry, clinical relevance has not been evaluated.



#### Western Blotting

**Image 2.** Western blot analysis of NAT2 Antibody (C-term) (ABIN652275 and ABIN2841158) in mouse kidney tissue lysates (35 µg/lane). NAT2 (arrow) was detected using the purified Pab.



#### Western Blotting

**Image 3.** Western blot analysis of NAT2 (arrow) using rabbit polyclonal NAT2 Antibody (C-term) (ABIN652275 and ABIN2841158). 293 cell lysates (2 µg/lane) either nontransfected (Lane 1) or transiently transfected (Lane 2) with the NAT2 gene.

Please check the [product details page](#) for more images. Overall 4 images are available for ABIN652275.