

Datasheet for ABIN652279
anti-Sorbs2 antibody (N-Term)[Go to Product page](#)

4 Images

Overview

| | |
|----------------------|--|
| Quantity: | 400 µL |
| Target: | Sorbs2 |
| Binding Specificity: | AA 175-204, N-Term |
| Reactivity: | Human |
| Host: | Rabbit |
| Clonality: | Polyclonal |
| Conjugate: | This Sorbs2 antibody is un-conjugated |
| Application: | Western Blotting (WB), Immunohistochemistry (Paraffin-embedded Sections) (IHC (p)), Flow Cytometry (FACS), Immunofluorescence (IF) |

Product Details

| | |
|-----------------------|--|
| Immunogen: | This ARGBP2 antibody is generated from rabbits immunized with a KLH conjugated synthetic peptide between 175-204 amino acids from the N-terminal region of human ARGBP2. |
| Clone: | RB19714 |
| Isotype: | Ig Fraction |
| Predicted Reactivity: | M, Pig, Rat |
| Purification: | This antibody is prepared by Saturated Ammonium Sulfate (SAS) precipitation followed by dialysis against PBS. |

Target Details

| | |
|---------|--------|
| Target: | Sorbs2 |
|---------|--------|

Target Details

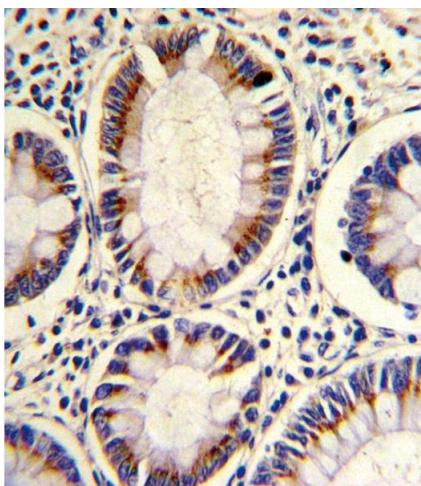
| | |
|-------------------|---|
| Alternative Name: | ARGBP2 (Sorbs2 Products) |
| Background: | Arg and c-Abl represent the mammalian members of the Abelson family of non-receptor protein-tyrosine kinases. They interact with the Arg/Abl binding proteins via the SH3 domains present in the carboxy end of the latter group of proteins. ARGBP2 is the sorbin and SH3 domain containing 2 protein. It has three C-terminal SH3 domains and an N-terminal sorbin homology(SoHo) domain that interacts with lipid raft proteins. The subcellular localization of this protein in epithelial and cardiac muscle cells suggests that it functions as an adapter protein to assemble signaling complexes in stress fibers, and that it is a potential link between Abl family kinases and the actin cytoskeleton. |
| Molecular Weight: | 124108 |
| Gene ID: | 8470 |
| NCBI Accession: | NP_001139142 , NP_001139143 , NP_001139144 , NP_001139145 , NP_001139146 , NP_001257700 , NP_003594 , NP_066547 |
| UniProt: | O94875 |

Application Details

| | |
|--------------------|--|
| Application Notes: | IF: 1:10~50. WB: 1:1000. IHC-P: 1:10~50. FC: 1:10~50 |
| Restrictions: | For Research Use only |

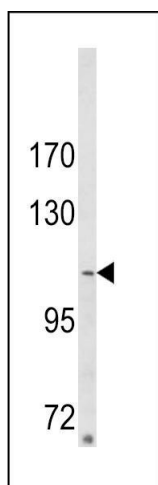
Handling

| | |
|--------------------|--|
| Format: | Liquid |
| Buffer: | Purified polyclonal antibody supplied in PBS with 0.09 % (W/V) sodium azide. |
| Preservative: | Sodium azide |
| Precaution of Use: | This product contains Sodium azide: a POISONOUS AND HAZARDOUS SUBSTANCE which should be handled by trained staff only. |
| Storage: | 4 °C,-20 °C |
| Storage Comment: | Maintain refrigerated at 2-8 °C for up to 6 months. For long term storage store at -20 °C in small aliquots to prevent freeze-thaw cycles. |
| Expiry Date: | 6 months |



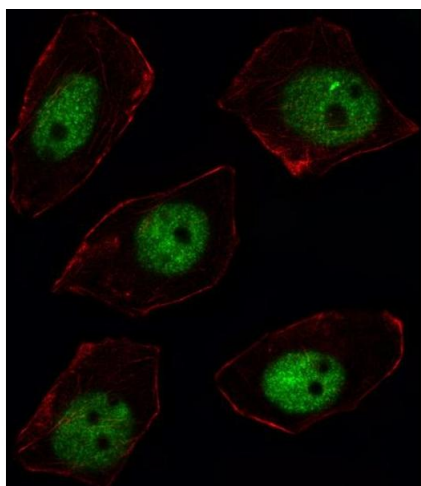
Immunohistochemistry (Paraffin-embedded Sections)

Image 1. Formalin-fixed and paraffin-embedded human colon carcinoma reacted with ARGBP2 Antibody (N-term), which was peroxidase-conjugated to the secondary antibody, followed by DAB staining. This data demonstrates the use of this antibody for immunohistochemistry, clinical relevance has not been evaluated.



Western Blotting

Image 2. Western blot analysis of ARGBP2 Antibody (N-term) (ABIN652279 and ABIN2841160) in MDA-M cell line lysates (35 µg/lane). ARGBP2 (arrow) was detected using the purified Pab.



Immunofluorescence

Image 3. Fluorescent image of cell stained with ARGBP2 Antibody (N-term) (ABIN652279 and ABIN2841160). cells were fixed with 4 % PFA (20 min), permeabilized with Triton X-100 (0.1 %, 10 min), then incubated with ARGBP2 primary antibody (1:25, 1 h at 37 °C). For secondary antibody, Alexa Fluor® 488 conjugated donkey anti-rabbit antibody (green) was used (1:400, 50 min at 37 °C). Cytoplasmic actin was counterstained with Alexa Fluor® 555 (red) conjugated Phalloidin (7 units/mL, 1 h at 37 °C). ARGBP2 immunoreactivity is localized to Nucleus significantly.

Please check the [product details page](#) for more images. Overall 4 images are available for ABIN652279.