

Datasheet for ABIN652294

**anti-MASTL antibody****3** Images[Go to Product page](#)

## Overview

Quantity:	400 µL
Target:	MASTL
Reactivity:	Human
Host:	Rabbit
Clonality:	Polyclonal
Conjugate:	This MASTL antibody is un-conjugated
Application:	Western Blotting (WB), Immunohistochemistry (Paraffin-embedded Sections) (IHC (p)), Flow Cytometry (FACS)

## Product Details

Immunogen:	This MASTL antibody is generated from rabbits immunized with human partial MASTL recombinant protein.
Clone:	RB22931
Isotype:	IgG
Purification:	This antibody is purified through a protein A column, followed by peptide affinity purification.

## Target Details

Target:	MASTL
Alternative Name:	MASTL ( <a href="#">MASTL Products</a> )
Background:	MASTL, microtubule associated serine/threonine kinase-like, contains 1 protein kinase domain which belongs to the Ser/Thr protein kinase family. It may be involved in megakaryocyte

## Target Details

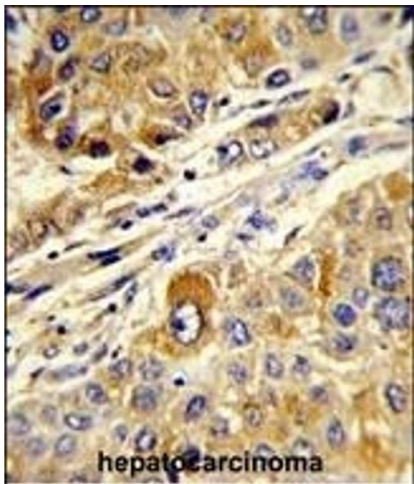
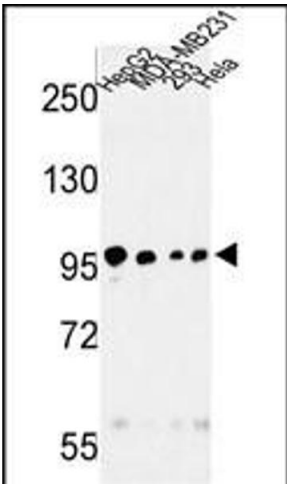
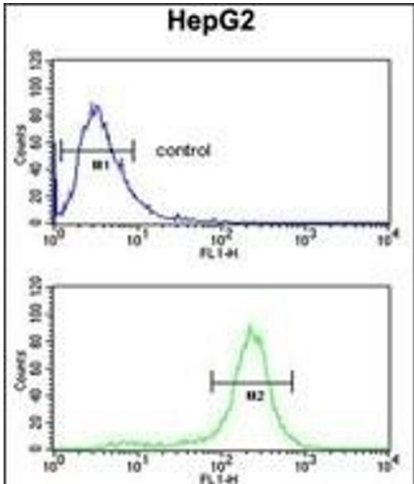
	differentiation. Defects in MASTL are a cause of nonsyndromic autosomal
Molecular Weight:	97319
Gene ID:	84930
NCBI Accession:	<a href="#">NP_001165774</a> , <a href="#">NP_001165775</a> , <a href="#">NP_116233</a>
UniProt:	<a href="#">Q96GX5</a>

## Application Details

Application Notes:	WB: 1:1000. IHC-P: 1:50~100. FC: 1:10~50
Restrictions:	For Research Use only

## Handling

Format:	Liquid
Buffer:	Purified polyclonal antibody supplied in PBS with 0.09 % (W/V) sodium azide.
Preservative:	Sodium azide
Precaution of Use:	This product contains Sodium azide: a POISONOUS AND HAZARDOUS SUBSTANCE which should be handled by trained staff only.
Storage:	4 °C,-20 °C
Storage Comment:	Maintain refrigerated at 2-8 °C for up to 6 months. For long term storage store at -20 °C in small aliquots to prevent freeze-thaw cycles.
Expiry Date:	6 months



### Flow Cytometry

**Image 1.** STL Antibody (ABIN652294 and ABIN2841296) flow cytometric analysis of HepG2 cells (bottom histogram) compared to a negative control cell (top histogram). FITC-conjugated goat-anti-rabbit secondary antibodies were used for the analysis.

### Western Blotting

**Image 2.** Western blot analysis of STL Antibody (ABIN652294 and ABIN2841296) in HepG2, MDA-M, 293, HeLa cell line lysates (35 µg/lane). STL (arrow) was detected using the purified Pab.

### Immunohistochemistry (Paraffin-embedded Sections)

**Image 3.** Forlin-fixed and paraffin-embedded human hepatocarcinoma reacted with STL Antibody, which was peroxidase-conjugated to the secondary antibody, followed by DAB staining. This data demonstrates the use of this antibody for immunohistochemistry, clinical relevance has not been evaluated.