

Datasheet for ABIN652299
anti-SCYL1 antibody (N-Term)[Go to Product page](#)

2 Images

Overview

Quantity:	400 µL
Target:	SCYL1
Binding Specificity:	AA 156-185, N-Term
Reactivity:	Human
Host:	Rabbit
Clonality:	Polyclonal
Conjugate:	This SCYL1 antibody is un-conjugated
Application:	Western Blotting (WB), Immunohistochemistry (Paraffin-embedded Sections) (IHC (p))

Product Details

Immunogen:	This SCYL1 antibody is generated from rabbits immunized with a KLH conjugated synthetic peptide between 156-185 amino acids from the N-terminal region of human SCYL1.
Clone:	RB9791
Isotype:	Ig Fraction
Predicted Reactivity:	B
Purification:	This antibody is purified through a protein A column, followed by peptide affinity purification.

Target Details

Target:	SCYL1
Alternative Name:	SCYL1 (SCYL1 Products)

Target Details

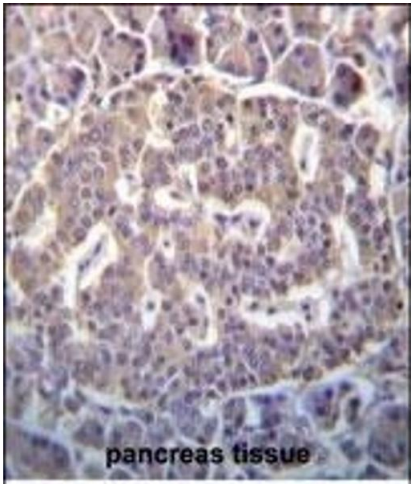
Background:	SCYL1 forms multimers following transfection into COS-7 cells. SCYL1 forms a 300-kD trimer using crosslinking reagents. Biochemical analysis revealed no phosphorylation or autophosphorylation activity. The 707-amino acid SCYL1 variant, variant 2, localized to centrosomes during mitosis. During interphase, fluorescence-tagged variant 2 localized in the cytoplasm as well as centrosomes. However, at the beginning of mitosis, the fluorescence appeared as a pair of bright nuclear foci that followed centrosome localization throughout mitosis, while maintaining diffuse cytoplasmic labeling. Endogenous variant 2 in HeLa cells showed a similar staining pattern. Centrosomal localization was independent of microtubules.
Molecular Weight:	89631
Gene ID:	57410
NCBI Accession:	NP_001041683 , NP_065731
UniProt:	Q96KG9
Pathways:	p53 Signaling

Application Details

Application Notes:	WB: 1:1000. IHC-P: 1:10~50
Restrictions:	For Research Use only

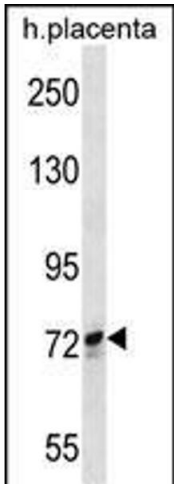
Handling

Format:	Liquid
Buffer:	Purified polyclonal antibody supplied in PBS with 0.09 % (W/V) sodium azide.
Preservative:	Sodium azide
Precaution of Use:	This product contains Sodium azide: a POISONOUS AND HAZARDOUS SUBSTANCE which should be handled by trained staff only.
Storage:	4 °C, -20 °C
Storage Comment:	Maintain refrigerated at 2-8 °C for up to 6 months. For long term storage store at -20 °C in small aliquots to prevent freeze-thaw cycles.
Expiry Date:	6 months



Immunohistochemistry (Paraffin-embedded Sections)

Image 1. SCYL1 Antibody (N-term) (ABIN652299 and ABIN2841349) immunohistochemistry analysis in formalin fixed and paraffin embedded human pancreas tissue followed by peroxidase conjugation of the secondary antibody and DAB staining. This data demonstrates the use of SCYL1 Antibody (N-term) for immunohistochemistry. Clinical relevance has not been evaluated.



Western Blotting

Image 2. SCYL1 Antibody (N-term) (ABIN652299 and ABIN2841349) western blot analysis in human placenta tissue lysates (35 µg/lane). This demonstrates the SCYL1 antibody detected the SCYL1 protein (arrow).